



# SZABO SCANDIC

Part of Europa Biosite

## Produktinformation



Forschungsprodukte & Biochemikalien



Zellkultur & Verbrauchsmaterial



Diagnostik & molekulare Diagnostik



Laborgeräte & Service

Weitere Information auf den folgenden Seiten!  
See the following pages for more information!



### Lieferung & Zahlungsart

siehe unsere [Liefer- und Versandbedingungen](#)

### Zuschläge

- Mindermengenzuschlag
- Trockeneiszuschlag
- Gefahrgutzuschlag
- Expressversand

### SZABO-SCANDIC HandelsgmbH

Quellenstraße 110, A-1100 Wien

T. +43(0)1 489 3961-0

F. +43(0)1 489 3961-7

[mail@szabo-scandic.com](mailto:mail@szabo-scandic.com)

[www.szabo-scandic.com](http://www.szabo-scandic.com)

[linkedin.com/company/szaboscandic](https://www.linkedin.com/company/szaboscandic) 

## gamma Tubulin antibody

**Cat No. GTX00881**

<b>Host</b>	Rabbit
<b>Clonality</b>	Polyclonal
<b>Isotype</b>	IgG
<b>Application</b>	WB, ICC/IF
<b>Reactivity</b>	Human, Xenopus, Rodent

**Package**  
100 µg

## APPLICATION

**Application Note**

\*Optimal dilutions/concentrations should be determined by the researcher.

Suggested dilution	Dilution
WB	1:200-1:1000
ICC/IF	1:100-1:200

Not tested in other applications.

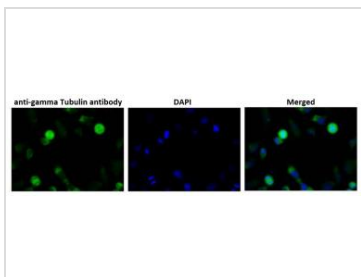
## PROPERTIES

<b>Form</b>	Liquid
<b>Buffer</b>	Filter-sterilized PBS, 50% glycerol
<b>Storage</b>	Store as concentrated solution. Centrifuge briefly prior to opening vial. For short-term storage (1-2 weeks), store at 4°C. For long-term storage, aliquot and store at -20°C or below. Avoid multiple freeze-thaw cycles.
<b>Concentration</b>	1 mg/ml (Please refer to the vial label for the specific concentration.)
<b>Immunogen</b>	Xenopus gamma-tubulin C-terminal peptide, C-EYHAATRPDYISWGTQDK conjugated with KLH
<b>Purification</b>	Purified by antigen-affinity chromatography
<b>Conjugation</b>	Unconjugated
<b>Note</b>	For laboratory use only. Not for any clinical, therapeutic, or diagnostic use in humans or animals. Not for animal or human consumption.



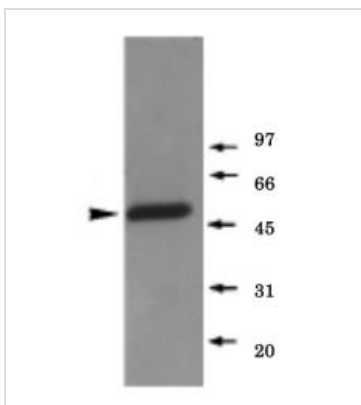
For full product information, images and publications, please visit our [website](#).

DATA IMAGES



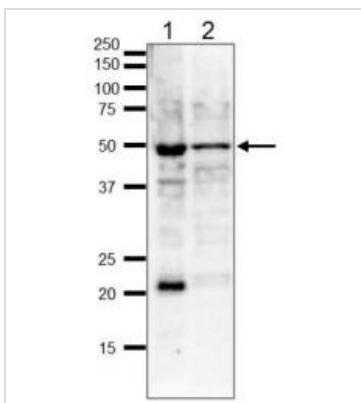
**GTX00881 ICC/IF Image**

ICC/IF analysis of HeLa cells using GTX00881 gamma Tubulin antibody.  
Dilution : 1:100



**GTX00881 WB Image**

WB analysis of Xenopus mitotic extract using GTX00881 gamma Tubulin antibody.  
Dilution : 1:1000



**GTX00881 WB Image**

WB analysis of various samples using GTX00881 gamma Tubulin antibody.  
Lane 1 : HeLa whole cell lysate  
Lane 2 : MCF-7 whole cell lysate  
Loading : 20 µg  
Dilution : 1:1000



**GTX00881 ICC/IF Image**

ICC/IF analysis of Xenopus sperm heads using GTX00881 gamma Tubulin antibody. The Xenopus sperm heads have been incubated in a Xenopus egg mitotic extract containing nocodazole. Gamma tubulin proteins are accumulated at sperm centriole in Xenopus sperm heads.  
Red : Primary antibody  
Blue : DAPI  
Dilution : 1:100



For full product information, images and publications, please visit our [website](#).