



SZABO SCANDIC

Part of Europa Biosite

Produktinformation



Forschungsprodukte & Biochemikalien



Zellkultur & Verbrauchsmaterial



Diagnostik & molekulare Diagnostik



Laborgeräte & Service

Weitere Information auf den folgenden Seiten!
See the following pages for more information!



Lieferung & Zahlungsart

siehe unsere [Liefer- und Versandbedingungen](#)

Zuschläge

- Mindermengenzuschlag
- Trockeneiszuschlag
- Gefahrgutzuschlag
- Expressversand

SZABO-SCANDIC HandelsgmbH

Quellenstraße 110, A-1100 Wien

T. +43(0)1 489 3961-0

F. +43(0)1 489 3961-7

mail@szabo-scandic.com

www.szabo-scandic.com

[linkedin.com/company/szaboscandic](https://www.linkedin.com/company/szaboscandic) 

RAD18 antibody

Cat No. GTX00886

Host	Rabbit
Clonality	Polyclonal
Isotype	IgG
Application	WB, ICC/IF, IP
Reactivity	Human

Package
100 µg

APPLICATION

Application Note

*Optimal dilutions/concentrations should be determined by the researcher.

Suggested dilution	Dilution
WB	1:1000
ICC/IF	Assay dependent
IP	Assay dependent

Not tested in other applications.

Calculated MW 56 kDa. ([Note](#))

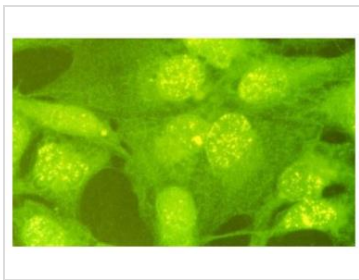
PROPERTIES

Form	Liquid
Buffer	PBS, 50% glycerol
Storage	Store as concentrated solution. Centrifuge briefly prior to opening vial. For short-term storage (1-2 weeks), store at 4°C. For long-term storage, aliquot and store at -20°C or below. Avoid multiple freeze-thaw cycles.
Concentration	1 mg/ml (Please refer to the vial label for the specific concentration.)
Immunogen	GST-fusion protein containing 113 carboxyl terminal of human Rad18
Purification	Purified by antigen-affinity chromatography
Conjugation	Unconjugated
Note	For laboratory use only. Not for any clinical, therapeutic, or diagnostic use in humans or animals. Not for animal or human consumption.

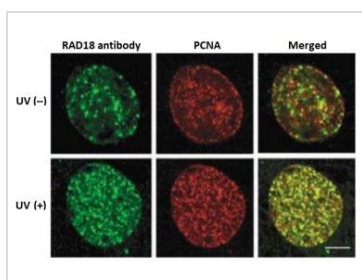


For full product information, images and publications, please visit our [website](#).

DATA IMAGES

**GTX00886 ICC/IF Image**

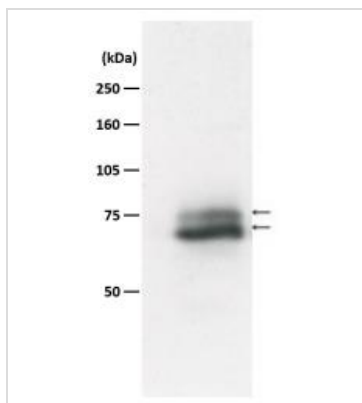
ICC/IF analysis of GM637 cells using GTX00886 RAD18 antibody. Rad18 protein is stained as yellow dots in nuclei.

**GTX00886 ICC/IF Image**

ICC/IF analysis of GM637 cells were irradiated with/without UV (15/m²) for 4 hrs using GTX00886 RAD18 antibody.

Fixation : Methanol

Dilution : 1:250

**GTX00886 WB Image**

WB analysis of A549 whole cell lysate using GTX00886 RAD18 antibody. The lower thick band is native Rad18 and the upper thin band is mono-ubiquitinated Rad18.

Dilution : 1:1000



For full product information, images and publications, please visit our [website](#).