



# SZABO SCANDIC

Part of Europa Biosite

## Produktinformation



Forschungsprodukte & Biochemikalien



Zellkultur & Verbrauchsmaterial



Diagnostik & molekulare Diagnostik



Laborgeräte & Service

Weitere Information auf den folgenden Seiten!  
See the following pages for more information!



### Lieferung & Zahlungsart

siehe unsere [Liefer- und Versandbedingungen](#)

### Zuschläge

- Mindermengenzuschlag
- Trockeneiszuschlag
- Gefahrgutzuschlag
- Expressversand

### SZABO-SCANDIC HandelsgmbH

Quellenstraße 110, A-1100 Wien

T. +43(0)1 489 3961-0

F. +43(0)1 489 3961-7

[mail@szabo-scandic.com](mailto:mail@szabo-scandic.com)

[www.szabo-scandic.com](http://www.szabo-scandic.com)

[linkedin.com/company/szaboscandic](https://www.linkedin.com/company/szaboscandic)

## RAD18 antibody

**Cat No. GTX00887**

<b>Host</b>	Rabbit
<b>Clonality</b>	Polyclonal
<b>Isotype</b>	IgG
<b>Application</b>	WB, ICC/IF, IHC-P, IP
<b>Reactivity</b>	Mouse

**Package**  
100 µg

## APPLICATION

**Application Note**

\*Optimal dilutions/concentrations should be determined by the researcher.

Suggested dilution	Dilution
WB	1:1000
ICC/IF	Assay dependent
IHC-P	1:100-1:300
IP	1:200-1:500

Not tested in other applications.

**Calculated MW** 57 kDa. ([Note](#))

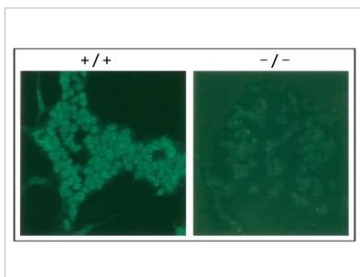
## PROPERTIES

<b>Form</b>	Liquid
<b>Buffer</b>	Filter-sterilized PBS, 50% glycerol
<b>Storage</b>	Store as concentrated solution. Centrifuge briefly prior to opening vial. For short-term storage (1-2 weeks), store at 4°C. For long-term storage, aliquot and store at -20°C or below. Avoid multiple freeze-thaw cycles.
<b>Concentration</b>	1 mg/ml (Please refer to the vial label for the specific concentration.)
<b>Immunogen</b>	GST-fusion protein containing 100 carboxyl terminal amino acids of mouse Rad18
<b>Purification</b>	Purified IgG From serum
<b>Conjugation</b>	Unconjugated
<b>Note</b>	For laboratory use only. Not for any clinical, therapeutic, or diagnostic use in humans or animals. Not for animal or human consumption.



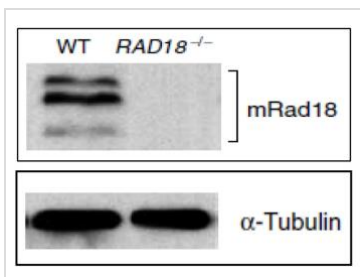
For full product information, images and publications, please visit our [website](#).

## DATA IMAGES

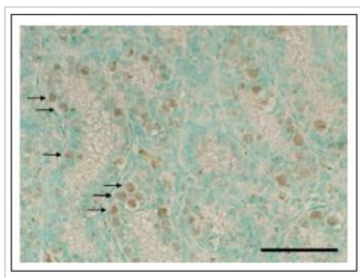
**GTX00887 ICC/IF Image**

ICC/IF analysis of Wild-type (+/+) and RAD18 knock-out mouse ES cells (-/-) using GTX00887 RAD18 antibody.

Prefixed 4% PFA and fixed with 80% methanol

**GTX00887 WB Image**

WB analysis of WT and RAD18<sup>-/-</sup> knock-out mouse ES cells using GTX00887 RAD18 antibody.

**GTX00887 IHC-P Image**

IHC-P analysis of mouse testis tissue section using GTX00887 RAD18 antibody. Arrows indicate undifferentiated spermatogonia. Signals were enhanced with TSA plus biotin system and detected by DAB substrate.



For full product information, images and publications, please visit our [website](#).