



# SZABO SCANDIC

Part of Europa Biosite

## Produktinformation



Forschungsprodukte & Biochemikalien



Zellkultur & Verbrauchsmaterial



Diagnostik & molekulare Diagnostik



Laborgeräte & Service

Weitere Information auf den folgenden Seiten!  
See the following pages for more information!



### Lieferung & Zahlungsart

siehe unsere [Liefer- und Versandbedingungen](#)

### Zuschläge

- Mindermengenzuschlag
- Trockeneiszuschlag
- Gefahrgutzuschlag
- Expressversand

### SZABO-SCANDIC HandelsgmbH

Quellenstraße 110, A-1100 Wien

T. +43(0)1 489 3961-0

F. +43(0)1 489 3961-7

[mail@szabo-scandic.com](mailto:mail@szabo-scandic.com)

[www.szabo-scandic.com](http://www.szabo-scandic.com)

[linkedin.com/company/szaboscandic](https://www.linkedin.com/company/szaboscandic) 

## RRM2 antibody

**Cat No. GTX00888**

|                    |                                     |
|--------------------|-------------------------------------|
| <b>Host</b>        | Rabbit                              |
| <b>Clonality</b>   | Polyclonal                          |
| <b>Isotype</b>     | IgG                                 |
| <b>Application</b> | WB, ICC/IF, IHC-P, IP               |
| <b>Reactivity</b>  | Human, Mouse, Rat, Hamster, Xenopus |

**Package**  
100 µg

## APPLICATION

**Application Note**

\*Optimal dilutions/concentrations should be determined by the researcher.

| Suggested dilution | Dilution        |
|--------------------|-----------------|
| WB                 | 1:1000-1:2000   |
| ICC/IF             | 1:100-1:1000    |
| IHC-P              | Assay dependent |
| IP                 | 1:300-1:1000    |

Not tested in other applications.

**Calculated MW** 45 kDa. ([Note](#))

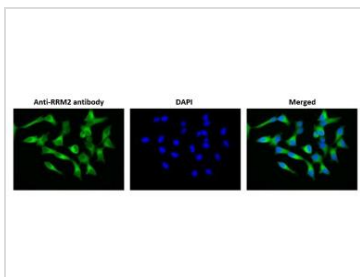
## PROPERTIES

|                      |  |
|----------------------|--|
| <b>Form</b>          | Liquid   |
| <b>Buffer</b>        | Filter-sterilized PBS, 50% glycerol  |
| <b>Storage</b>       | Store as concentrated solution. Centrifuge briefly prior to opening vial. For short-term storage (1-2 weeks), store at 4°C. For long-term storage, aliquot and store at -20°C or below. Avoid multiple freeze-thaw cycles. |
| <b>Concentration</b> | 1 mg/ml (Please refer to the vial label for the specific concentration.)   |
| <b>Immunogen</b>     | Synthetic peptide (11 amino acids) in the C-terminal region of human and mouse RRM2, conjugated with KLH   |
| <b>Purification</b>  | Purified by antigen-affinity chromatography  |
| <b>Conjugation</b>   | Unconjugated   |
| <b>Note</b>          | For laboratory use only. Not for any clinical, therapeutic, or diagnostic use in humans or animals. Not for animal or human consumption.   |



For full product information, images and publications, please visit our [website](#).

## DATA IMAGES

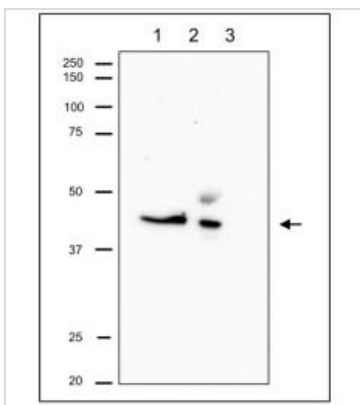
**GTX00888 ICC/IF Image**

ICC/IF analysis of MCF-7 cells using GTX00888 RRM2 antibody.

Fixation : 4% PFA

Permeabilization : 0.25% Triton X-100

Dilution : 1:100

**GTX00888 IP Image**

IP analysis of CHO whole cell lysate using GTX00888 RRM2 antibody. The upper band in lane 2 is IgG heavy chain.

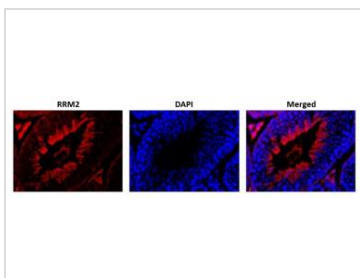
Lane 1 : Input

Lane 2 : The immunoprecipitate with the antibody

Lane 3 : Supernatant of immuno-precipitation

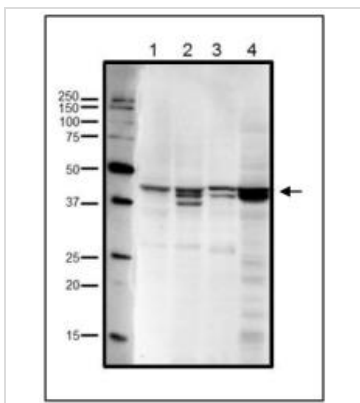
IP antibody : 1:1000

IB antibody : 1:500

**GTX00888 IHC-P Image**

IHC-P analysis of mouse testis tissue section using GTX00888 RRM2 antibody. RRM2 is abundantly expressed in actively proliferating cells.

Dilution : 1:300

**GTX00888 WB Image**

WB analysis of various samples using GTX00888 RRM2 antibody. Multiple bands are due to phosphorylation at Ser20 and/or Thr33 (human sequence).

Lane 1 : HeLa whole cell lysate

Lane 2 : MCF-7 whole cell lysate

Lane 3 : NIH-3T3 whole cell lysate

Lane 4 : Xenopus eggs at mitotic stage

Dilution : 1:1000

Loading : 20 µg



For full product information, images and publications, please visit our [website](#).