



# SZABO SCANDIC

Part of Europa Biosite

## Produktinformation



Forschungsprodukte & Biochemikalien



Zellkultur & Verbrauchsmaterial



Diagnostik & molekulare Diagnostik



Laborgeräte & Service

Weitere Information auf den folgenden Seiten!  
See the following pages for more information!



### Lieferung & Zahlungsart

siehe unsere [Liefer- und Versandbedingungen](#)

### Zuschläge

- Mindermengenzuschlag
- Trockeneiszuschlag
- Gefahrgutzuschlag
- Expressversand

### SZABO-SCANDIC HandelsgmbH

Quellenstraße 110, A-1100 Wien

T. +43(0)1 489 3961-0

F. +43(0)1 489 3961-7

[mail@szabo-scandic.com](mailto:mail@szabo-scandic.com)

[www.szabo-scandic.com](http://www.szabo-scandic.com)

[linkedin.com/company/szaboscandic](https://www.linkedin.com/company/szaboscandic) 

## CDT2 antibody

**Cat No. GTX00893**

<b>Host</b>	Rabbit
<b>Clonality</b>	Polyclonal
<b>Isotype</b>	IgG
<b>Application</b>	WB, ICC/IF, FACS, IP
<b>Reactivity</b>	Human, Mouse, Rat, Hamster

**Package**  
100 µl

## APPLICATION

**Application Note**

\*Optimal dilutions/concentrations should be determined by the researcher.

Suggested dilution	Dilution
WB	1:200-1:2000
ICC/IF	1:100-1:1000
FACS	Assay dependent
IP	Assay dependent

Not tested in other applications.

**Calculated MW** 79 kDa. ([Note](#))

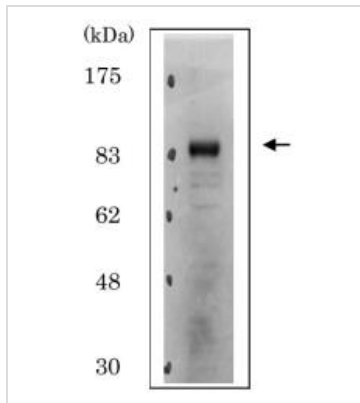
## PROPERTIES

<b>Form</b>	Liquid
<b>Buffer</b>	Serum with 0.05% sodium azide
<b>Storage</b>	Store as concentrated solution. Centrifuge briefly prior to opening vial. For short-term storage (1-2 weeks), store at 4°C. For long-term storage, aliquot and store at -20°C or below. Avoid multiple freeze-thaw cycles.
<b>Concentration</b>	Batch dependent (Please refer to the vial label for the specific concentration.)
<b>Immunogen</b>	E. coli expressed and purified 6xHis-tagged C-terminal 150 amino acids of human Cdt2
<b>Purification</b>	Unpurified
<b>Conjugation</b>	Unconjugated
<b>Note</b>	For laboratory use only. Not for any clinical, therapeutic, or diagnostic use in humans or animals. Not for animal or human consumption.



For full product information, images and publications, please visit our [website](#).

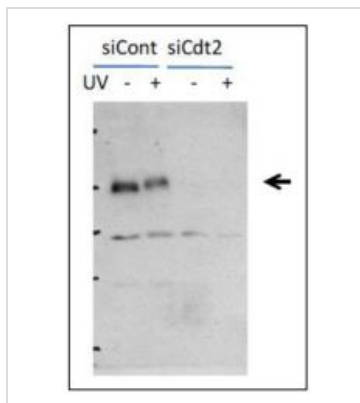
## DATA IMAGES

**GTX00893 WB Image**

WB analysis of HeLa whole cell lysate using GTX00893 CDT2 antibody.

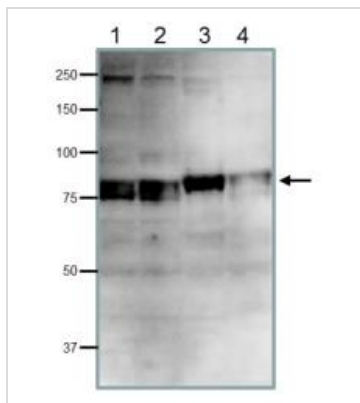
Dilution : 1:2000

Loading : 20 µg

**GTX00893 WB Image**

WB analysis of HeLa cells were transfected with control or Cdt2 siRNA using GTX00893 CDT2 antibody.

Cdt2 is phosphorylated after UV irradiation as shown by the band shift-up in irradiated sample (UV +).

**GTX00893 WB Image**

WB analysis of various samples using GTX00893 CDT2 antibody. Doublet bands reflect post-translational phosphorylation.

Lane 1 : HeLa whole cell lysate

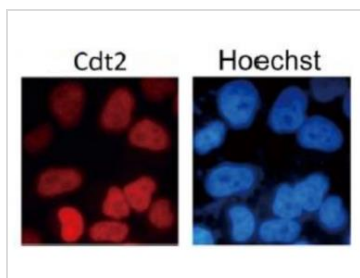
Lane 2 : MCF-7 whole cell lysate

Lane 3 : NIH-3T3 whole cell lysate

Lane 4 : CHO whole cell lysate

Dilution : 1:200

Loading : 40 µg

**GTX00893 ICC/IF Image**

ICC/IF analysis of HeLa cells using GTX00893 CDT2 antibody. Cdt2 protein is localized in nuclei at all cell stages.

Fixation : 4% PFA, 10 min

Permeabilization : 0.25% (v/v) Triton X-100 in PBS



For full product information, images and publications, please visit our [website](#).