



# SZABO SCANDIC

Part of Europa Biosite

## Produktinformation



Forschungsprodukte & Biochemikalien



Zellkultur & Verbrauchsmaterial



Diagnostik & molekulare Diagnostik



Laborgeräte & Service

Weitere Information auf den folgenden Seiten!  
See the following pages for more information!



### Lieferung & Zahlungsart

siehe unsere [Liefer- und Versandbedingungen](#)

### Zuschläge

- Mindermengenzuschlag
- Trockeneiszuschlag
- Gefahrgutzuschlag
- Expressversand

### SZABO-SCANDIC HandelsgmbH

Quellenstraße 110, A-1100 Wien

T. +43(0)1 489 3961-0

F. +43(0)1 489 3961-7

[mail@szabo-scandic.com](mailto:mail@szabo-scandic.com)

[www.szabo-scandic.com](http://www.szabo-scandic.com)

[linkedin.com/company/szaboscandic](https://www.linkedin.com/company/szaboscandic) 

## MCM7 antibody

**Cat No. GTX00894**

<b>Host</b>	Rabbit
<b>Clonality</b>	Polyclonal
<b>Isotype</b>	IgG
<b>Application</b>	WB, ICC/IF, FACS, IP, ChIP assay
<b>Reactivity</b>	Human, Mouse, Rat, Hamster

Package  
100 µg

## APPLICATION

**Application Note**

\*Optimal dilutions/concentrations should be determined by the researcher.

Suggested dilution	Dilution
WB	1:1000-1:5000
ICC/IF	1:200-1:1000
FACS	Assay dependent
IP	Assay dependent
ChIP assay	Assay dependent

Not tested in other applications.

**Calculated MW** 81 kDa. ([Note](#))

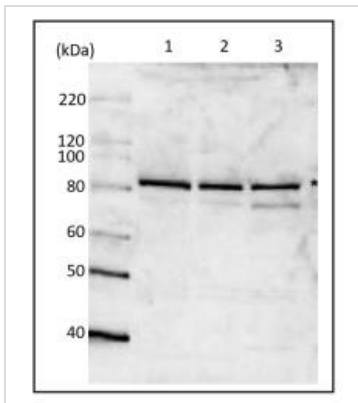
## PROPERTIES

<b>Form</b>	Liquid
<b>Buffer</b>	PBS, 50% glycerol
<b>Storage</b>	Store as concentrated solution. Centrifuge briefly prior to opening vial. For short-term storage (1-2 weeks), store at 4°C. For long-term storage, aliquot and store at -20°C or below. Avoid multiple freeze-thaw cycles.
<b>Concentration</b>	1 mg/ml (Please refer to the vial label for the specific concentration.)
<b>Immunogen</b>	Purified His6-tagged human MCM7 protein encompassing 562 -719 amino acids
<b>Purification</b>	Purified IgG From serum
<b>Conjugation</b>	Unconjugated
<b>Note</b>	For laboratory use only. Not for any clinical, therapeutic, or diagnostic use in humans or animals. Not for animal or human consumption.



For full product information, images and publications, please visit our [website](#).

## DATA IMAGES

**GTX00894 WB Image**

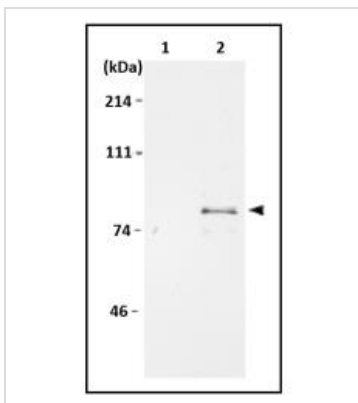
WB analysis of various samples using GTX00894 MCM7 antibody. "\*" : Indicates the band of MCM7 protein.

Lane 1 : untreated HeLa cells

Lane 2 : HeLa cells treated with 100 nM adriamycin for 24 hrs

Lane 3 : NIH-3T3 whole cell lysate

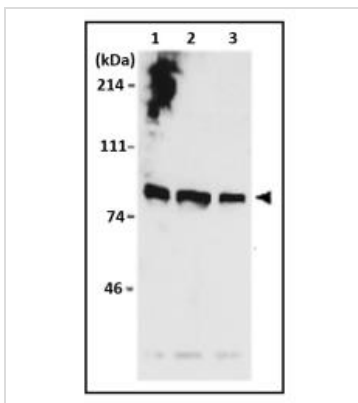
Dilution : 1:1000

**GTX00894 IP Image**

IP analysis of WI38 whole cell lysate using GTX00894 MCM7 antibody. Cells were labeled with  $S^{35}$  methionine and MCM7 was immunoprecipitated with the anti-MCM7 antibody followed by SDS-PAGE and autoradiography.

Lane 1 : Immunoprecipitation with pre-immune serum

Lane 2 : Immunoprecipitation with anti-MCM7 antiserum

**GTX00894 WB Image**

WB analysis of various samples using GTX00894 MCM7 antibody.

Lane 1 : SiHa whole cell lysate

Lane 2 : C33A whole cell lysate

Lane 3 : WI38 whole cell lysate



For full product information, images and publications, please visit our [website](#).