



SZABO SCANDIC

Part of Europa Biosite

Produktinformation



Forschungsprodukte & Biochemikalien



Zellkultur & Verbrauchsmaterial



Diagnostik & molekulare Diagnostik



Laborgeräte & Service

Weitere Information auf den folgenden Seiten!
See the following pages for more information!



Lieferung & Zahlungsart

siehe unsere [Liefer- und Versandbedingungen](#)

Zuschläge

- Mindermengenzuschlag
- Trockeneiszuschlag
- Gefahrgutzuschlag
- Expressversand

SZABO-SCANDIC HandelsgmbH

Quellenstraße 110, A-1100 Wien

T. +43(0)1 489 3961-0

F. +43(0)1 489 3961-7

mail@szabo-scandic.com

www.szabo-scandic.com

[linkedin.com/company/szaboscandic](https://www.linkedin.com/company/szaboscandic) 

GRWD1 antibody

Cat No. GTX00895

Host	Rabbit
Clonality	Polyclonal
Isotype	IgG
Application	WB, ICC/IF, IP, ChIP assay
Reactivity	Human, Mouse, Rat

Package
100 µg

APPLICATION

Application Note

*Optimal dilutions/concentrations should be determined by the researcher.

Suggested dilution	Dilution
WB	1:1000-1:3000
ICC/IF	1:100-1:1000
IP	Assay dependent
ChIP assay	Assay dependent

Not tested in other applications.

Calculated MW 49 kDa. ([Note](#))

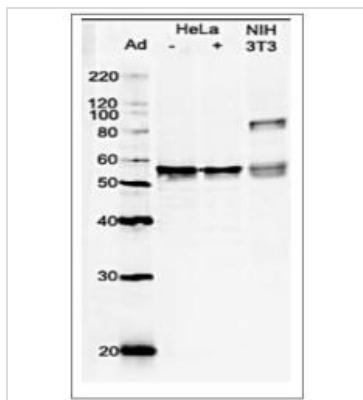
PROPERTIES

Form	Liquid
Buffer	Filter-sterilized PBS, 50% glycerol
Storage	Store as concentrated solution. Centrifuge briefly prior to opening vial. For short-term storage (1-2 weeks), store at 4°C. For long-term storage, aliquot and store at -20°C or below. Avoid multiple freeze-thaw cycles.
Concentration	1 mg/ml (Please refer to the vial label for the specific concentration.)
Immunogen	Purified GST-GRWD1 (human, full-length) expressed in E. coli
Purification	Purified by antigen-affinity chromatography From serum
Conjugation	Unconjugated
Note	For laboratory use only. Not for any clinical, therapeutic, or diagnostic use in humans or animals. Not for animal or human consumption.



For full product information, images and publications, please visit our [website](#).

DATA IMAGES



GTX00895 WB Image

WB analysis of various samples using GTX00895 GRWD1 antibody.

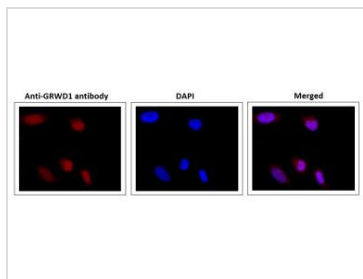
Lane 1 : untreated HeLa cells

Lane 2 : HeLa cells treated with adriamycin

Lane 3 : NIH-3T3 whole cell lysate

Dilution : 1:1000

Loading : 10 µg



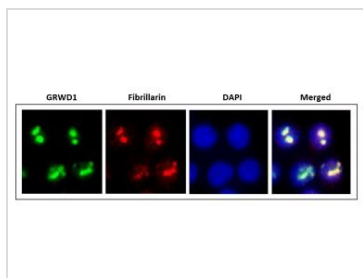
GTX00895 ICC/IF Image

ICC/IF analysis of HeLa cells using GTX00895 GRWD1 antibody.

Fixation : 4% PFA, overnight

Permeabilization : 0.25% Triton X-100 in PBS, 10 min

Dilution : 1:1000



GTX00895 ICC/IF Image

ICC/IF analysis of HCT116 cells using GTX00895 GRWD1 antibody. To remove nucleoplasmic proteins, the cells were pre-extracted with Triton X-100 before stained.

Dilution : 1:500



For full product information, images and publications, please visit our [website](#).