



SZABO SCANDIC

Part of Europa Biosite

Produktinformation



Forschungsprodukte & Biochemikalien



Zellkultur & Verbrauchsmaterial



Diagnostik & molekulare Diagnostik



Laborgeräte & Service

Weitere Information auf den folgenden Seiten!
See the following pages for more information!



Lieferung & Zahlungsart

siehe unsere [Liefer- und Versandbedingungen](#)

Zuschläge

- Mindermengenzuschlag
- Trockeneiszuschlag
- Gefahrgutzuschlag
- Expressversand

SZABO-SCANDIC HandelsgmbH

Quellenstraße 110, A-1100 Wien

T. +43(0)1 489 3961-0

F. +43(0)1 489 3961-7

mail@szabo-scandic.com

www.szabo-scandic.com

[linkedin.com/company/szaboscandic](https://www.linkedin.com/company/szaboscandic) 

CDC6 antibody

Cat No. GTX00896

Host	Rabbit
Clonality	Polyclonal
Isotype	IgG
Application	WB, ICC/IF, IP, ChIP assay
Reactivity	Human, Mouse, Rat

Package
100 µg

APPLICATION

Application Note

*Optimal dilutions/concentrations should be determined by the researcher.

Suggested dilution	Dilution
WB	1:1000-1:3000
ICC/IF	1:200
IP	1:200
ChIP assay	Assay dependent

Not tested in other applications.

Calculated MW 63 kDa. ([Note](#))

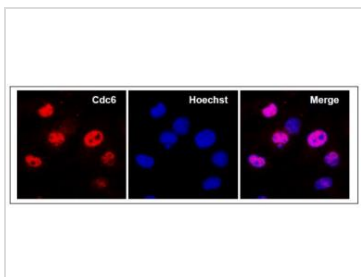
PROPERTIES

Form	Liquid
Buffer	Filter-sterilized PBS, 50% glycerol
Storage	Store as concentrated solution. Centrifuge briefly prior to opening vial. For short-term storage (1-2 weeks), store at 4°C. For long-term storage, aliquot and store at -20°C or below. Avoid multiple freeze-thaw cycles.
Concentration	1 mg/ml (Please refer to the vial label for the specific concentration.)
Immunogen	Recombinant GST-human CDC6 (1-326 amino acids) expressed in E. coli
Purification	Purified by antigen-affinity chromatography From serum
Conjugation	Unconjugated
Note	For laboratory use only. Not for any clinical, therapeutic, or diagnostic use in humans or animals. Not for animal or human consumption.



For full product information, images and publications, please visit our [website](#).

DATA IMAGES



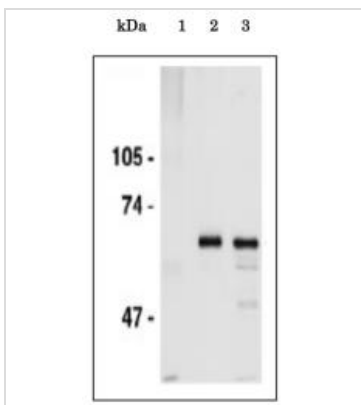
GTx00896 ICC/IF Image

ICC/IF analysis of MEF cells (E14.5) using GTx00896 CDC6 antibody. Note that CDC6 abundantly localizes in nuclei of the cells at G1 and early S phase.

Fixation : 4% PFA, RT, 10 min

Permeabilization : ice-cold methanol, on ice, 10 min

Dilution : 1:200



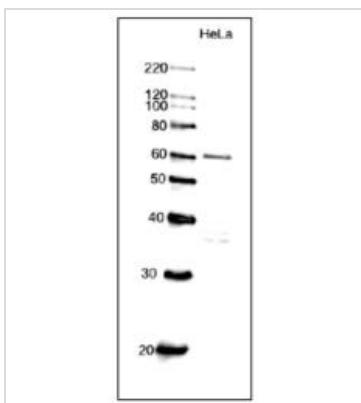
GTx00896 IP Image

IP analysis of HeLa whole cell lysate using GTx00896 CDC6 antibody.

Lane 1 : Control IP with non-immune IgG

Lane 2 : Immunoprecipitates with anti-CDC6 antibody

Lane 3 : Input

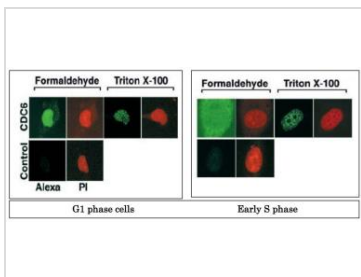


GTx00896 WB Image

WB analysis of HeLa whole cell lysate using GTx00896 CDC6 antibody.

Dilution : 1:1000

Loading : 10 µg



GTx00896 ICC/IF Image

ICC/IF analysis of HeLa cells in G1 or early S phase using GTx00896 CDC6 antibody or Control non-immune antibody.

Green : control or primary antibody

Red : PI (propidium iodide)



For full product information, images and publications, please visit our [website](#).