



# SZABO SCANDIC

Part of Europa Biosite

## Produktinformation



Forschungsprodukte & Biochemikalien



Zellkultur & Verbrauchsmaterial



Diagnostik & molekulare Diagnostik



Laborgeräte & Service

Weitere Information auf den folgenden Seiten!  
See the following pages for more information!



### Lieferung & Zahlungsart

siehe unsere [Liefer- und Versandbedingungen](#)

### Zuschläge

- Mindermengenzuschlag
- Trockeneiszuschlag
- Gefahrgutzuschlag
- Expressversand

### SZABO-SCANDIC HandelsgmbH

Quellenstraße 110, A-1100 Wien

T. +43(0)1 489 3961-0

F. +43(0)1 489 3961-7

[mail@szabo-scandic.com](mailto:mail@szabo-scandic.com)

[www.szabo-scandic.com](http://www.szabo-scandic.com)

[linkedin.com/company/szaboscandic](https://www.linkedin.com/company/szaboscandic) 

## HP1 gamma antibody

Cat No. GTX00898

<b>Host</b>	Rabbit
<b>Clonality</b>	Polyclonal
<b>Isotype</b>	IgG
<b>Application</b>	WB, ICC/IF, ChIP assay
<b>Reactivity</b>	Human, Hamster

Package  
50 µg

## APPLICATION

## Application Note

\*Optimal dilutions/concentrations should be determined by the researcher.

Suggested dilution	Dilution
WB	1:2000-1:10000
ICC/IF	Assay dependent
ChIP assay	Assay dependent

Not tested in other applications.

<b>Calculated MW</b>	21 kDa. ( <a href="#">Note</a> )
<b>Specificity/Sensitivity</b>	chicken, Xenopus, Drosophila, and zebrafish

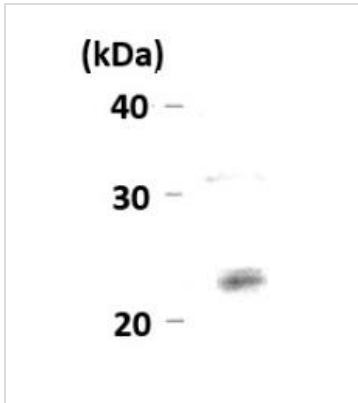
## PROPERTIES

<b>Form</b>	Liquid
<b>Buffer</b>	Filter-sterilized 0.12 M sodium phosphate buffer (pH 7.4), 50% glycerol
<b>Storage</b>	Store as concentrated solution. Centrifuge briefly prior to opening vial. For short-term storage (1-2 weeks), store at 4°C. For long-term storage, aliquot and store at -20°C or below. Avoid multiple freeze-thaw cycles.
<b>Concentration</b>	0.75 mg/ml (Please refer to the vial label for the specific concentration.)
<b>Immunogen</b>	The product is prepared by immunizing rabbit with the synthetic peptide WHSCPEDEAQ-C corresponding to the C-terminal sequence of human HP1 gamma and purified by affinity purification with the peptide.
<b>Purification</b>	Purified IgG
<b>Conjugation</b>	Unconjugated
<b>Note</b>	For laboratory use only. Not for any clinical, therapeutic, or diagnostic use in humans or animals. Not for animal or human consumption.

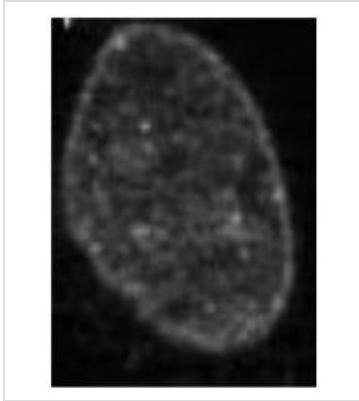


For full product information, images and publications, please visit our [website](#).

## DATA IMAGES

**GTX00898 WB Image**

WB analysis of BHK cell Lysate using GTX00898 HP1 gamma antibody.

**GTX00898 ICC/IF Image**

ICC/IF analysis of BHK cells using GTX00898 HP1 gamma antibody.

Fixation : 4% PFA



For full product information, images and publications, please visit our [website](#).