



SZABO SCANDIC

Part of Europa Biosite

Produktinformation



Forschungsprodukte & Biochemikalien



Zellkultur & Verbrauchsmaterial



Diagnostik & molekulare Diagnostik



Laborgeräte & Service

Weitere Information auf den folgenden Seiten!
See the following pages for more information!



Lieferung & Zahlungsart

siehe unsere [Liefer- und Versandbedingungen](#)

Zuschläge

- Mindermengenzuschlag
- Trockeneiszuschlag
- Gefahrgutzuschlag
- Expressversand

SZABO-SCANDIC HandelsgmbH

Quellenstraße 110, A-1100 Wien

T. +43(0)1 489 3961-0

F. +43(0)1 489 3961-7

mail@szabo-scandic.com

www.szabo-scandic.com

[linkedin.com/company/szaboscandic](https://www.linkedin.com/company/szaboscandic) 

TAF1 antibody

Cat No. GTX00900

Host	Rabbit
Clonality	Polyclonal
Isotype	IgG
Application	WB, ICC/IF
Reactivity	Human, Mouse, Rat, Hamster

Package
100 µl

APPLICATION

Application Note

*Optimal dilutions/concentrations should be determined by the researcher.

Suggested dilution	Dilution
WB	1:1000
ICC/IF	1:1000-1:5000

Not tested in other applications.

Calculated MW 213 kDa. ([Note](#))

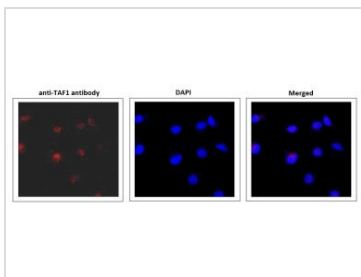
PROPERTIES

Form	Liquid
Buffer	Serum with 0.05% sodium azide
Storage	Store as concentrated solution. Centrifuge briefly prior to opening vial. For short-term storage (1-2 weeks), store at 4°C. For long-term storage, aliquot and store at -20°C or below. Avoid multiple freeze-thaw cycles.
Concentration	Batch dependent (Please refer to the vial label for the specific concentration.)
Immunogen	Synthetic peptide of human TFIID subunit 1 protein corresponding to amino acids 103-123, STEDAVDYSIDINEVAEDESRR-C, conjugated with KLH
Purification	Unpurified
Conjugation	Unconjugated
Note	For laboratory use only. Not for any clinical, therapeutic, or diagnostic use in humans or animals. Not for animal or human consumption.



For full product information, images and publications, please visit our [website](#).

DATA IMAGES



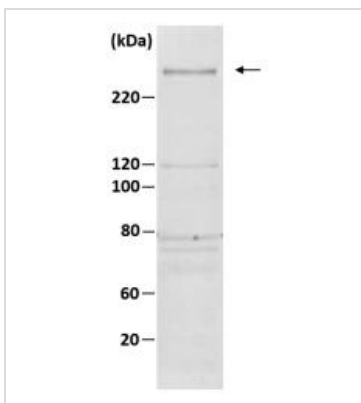
GTX00900 ICC/IF Image

ICC/IF analysis of HeLa cells using GTX00900 TAF1 antibody. TAF1 protein was detected in nucleus.

Fixation : 4% PFA

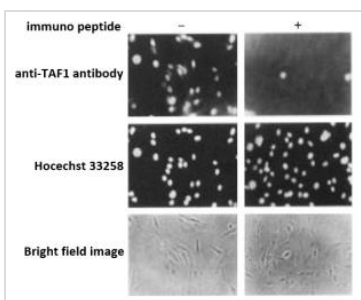
Permeabilization : 0.25% Triton X-100

Dilution : 1:5000



GTX00900 WB Image

WB analysis of HeLa whole cell lysate (10 µg) using GTX00900 TAF1 antibody.



GTX00900 ICC/IF Image

ICC/IF analysis of BHK cells using GTX00900 TAF1 antibody. TAF1 antibody pre-incubated with (right panel) or without (left panel) immunogen peptide.

Fixation : 3% formaldehyde

Permeabilization : 1% NP-40



For full product information, images and publications, please visit our [website](#).