



SZABO SCANDIC

Part of Europa Biosite

Produktinformation



Forschungsprodukte & Biochemikalien



Zellkultur & Verbrauchsmaterial



Diagnostik & molekulare Diagnostik



Laborgeräte & Service

Weitere Information auf den folgenden Seiten!
See the following pages for more information!



Lieferung & Zahlungsart

siehe unsere [Liefer- und Versandbedingungen](#)

Zuschläge

- Mindermengenzuschlag
- Trockeneiszuschlag
- Gefahrgutzuschlag
- Expressversand

SZABO-SCANDIC HandelsgmbH

Quellenstraße 110, A-1100 Wien

T. +43(0)1 489 3961-0

F. +43(0)1 489 3961-7

mail@szabo-scandic.com

www.szabo-scandic.com

[linkedin.com/company/szaboscandic](https://www.linkedin.com/company/szaboscandic) 

PURA antibody

Cat No. GTX00901

| | |
|--------------------|----------------|
| Host | Rabbit |
| Clonality | Polyclonal |
| Isotype | IgG |
| Application | WB, ICC/IF, IP |
| Reactivity | Human, Mouse |

Package
100 µg

APPLICATION

Application Note

*Optimal dilutions/concentrations should be determined by the researcher.

| Suggested dilution | Dilution |
|--------------------|---------------|
| WB | 1:1000-1:3000 |
| ICC/IF | 1:100-1:500 |
| IP | 1:1000 |

Not tested in other applications.

Calculated MW 35 kDa. ([Note](#))

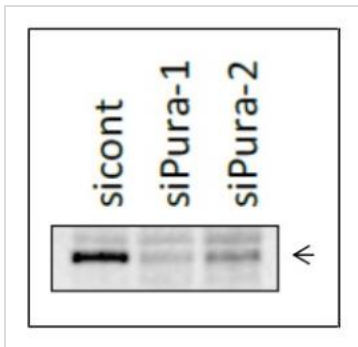
PROPERTIES

| | |
|----------------------|--|
| Form | Liquid |
| Buffer | Filter-sterilized PBS, 50% glycerol |
| Storage | Store as concentrated solution. Centrifuge briefly prior to opening vial. For short-term storage (1-2 weeks), store at 4°C. For long-term storage, aliquot and store at -20°C or below. Avoid multiple freeze-thaw cycles. |
| Concentration | 1 mg/ml (Please refer to the vial label for the specific concentration.) |
| Immunogen | Recombinant GST-Pura (human, full-length) expressed in E. coli |
| Purification | Purified by antigen-affinity chromatography From serum |
| Conjugation | Unconjugated |
| Note | For laboratory use only. Not for any clinical, therapeutic, or diagnostic use in humans or animals. Not for animal or human consumption. |

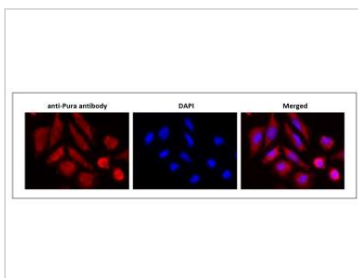


For full product information, images and publications, please visit our [website](#).

DATA IMAGES

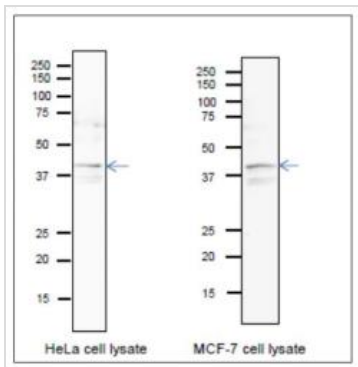
**GTX00901 WB Image**

WB analysis of HCT116 whole cell lysate transfected with si-Pura for 48 hrs using GTX00901 PURA antibody.

**GTX00901 ICC/IF Image**

ICC/IF analysis of HeLa cells using GTX00901 PURA antibody.

Dilution : 1:100

**GTX00901 WB Image**

WB analysis of various samples using GTX00901 PURA antibody. Blotting was done in wet system at 15 v overnight.

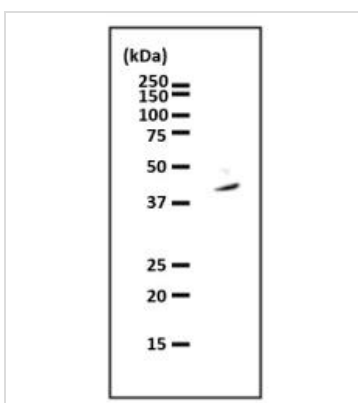
CanGetSignal (Toyobo, Osaka) was used as a signal enhancer.

SDS-PAGE : 12.5%

Left : HeLa whole cell lysate

Right : MCF-7 whole cell lysate

Dilution : 1:1000

**GTX00901 IP Image**

IP analysis of HeLa whole cell lysate using GTX00901 PURA antibody.



For full product information, images and publications, please visit our [website](#).