



# SZABO SCANDIC

Part of Europa Biosite

## Produktinformation



Forschungsprodukte & Biochemikalien



Zellkultur & Verbrauchsmaterial



Diagnostik & molekulare Diagnostik



Laborgeräte & Service

Weitere Information auf den folgenden Seiten!  
See the following pages for more information!



### Lieferung & Zahlungsart

siehe unsere [Liefer- und Versandbedingungen](#)

### Zuschläge

- Mindermengenzuschlag
- Trockeneiszuschlag
- Gefahrgutzuschlag
- Expressversand

### SZABO-SCANDIC HandelsgmbH

Quellenstraße 110, A-1100 Wien

T. +43(0)1 489 3961-0

F. +43(0)1 489 3961-7

[mail@szabo-scandic.com](mailto:mail@szabo-scandic.com)

[www.szabo-scandic.com](http://www.szabo-scandic.com)

[linkedin.com/company/szaboscandic](https://www.linkedin.com/company/szaboscandic) 

## ACE3 antibody

**Cat No. GTX00904**

<b>Host</b>	Rabbit
<b>Clonality</b>	Polyclonal
<b>Isotype</b>	IgG
<b>Application</b>	WB, ICC/IF, IP
<b>Reactivity</b>	Mouse

**Package**  
100 µl

## APPLICATION

**Application Note**

\*Optimal dilutions/concentrations should be determined by the researcher.

Suggested dilution	Dilution
WB	1:500-1:1000
ICC/IF	1:100
IP	1:100

Not tested in other applications.

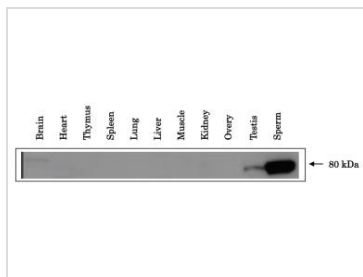
## PROPERTIES

<b>Form</b>	Liquid
<b>Buffer</b>	Serum with 0.1% sodium azide
<b>Storage</b>	Store as concentrated solution. Centrifuge briefly prior to opening vial. For short-term storage (1-2 weeks), store at 4°C. For long-term storage, aliquot and store at -20°C or below. Avoid multiple freeze-thaw cycles.
<b>Concentration</b>	Batch dependent (Please refer to the vial label for the specific concentration.)
<b>Immunogen</b>	NTENTPWMKNEGQS (C-terminal of mouse ACE3)
<b>Purification</b>	Unpurified
<b>Conjugation</b>	Unconjugated
<b>Note</b>	For laboratory use only. Not for any clinical, therapeutic, or diagnostic use in humans or animals. Not for animal or human consumption.



For full product information, images and publications, please visit our [website](#).

DATA IMAGES



**GTX00904 WB Image**

WB analysis of various mouse tissue samples using GTX00904 ACE3 antibody.

Dilution : 1:500

Loading : 30 µg

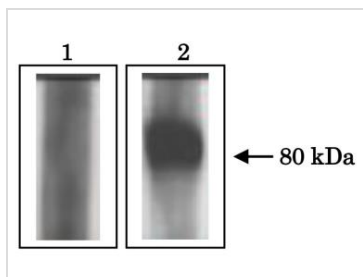


**GTX00904 ICC/IF Image**

ICC/IF analysis of mouse sperm prepared from cauda epidymis using GTX00904 ACE3 antibody.

Fixation : Ethanol

Dilution : 1:100



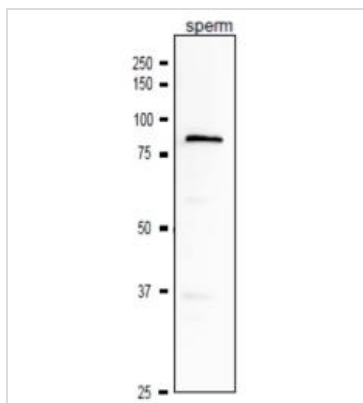
**GTX00904 IP Image**

IP analysis of mouse sperm using GTX00904 ACE3 antibody.

Lane 1 : Non-immune serum

Lane 2 : Anti-ACE3 antibody

Total protein amount : 100 µg



**GTX00904 WB Image**

WB analysis of mouse sperm using GTX00904 ACE3 antibody.

Dilution : 1:1000

Loading : 10 µg

SDS-PAGE : 10%



For full product information, images and publications, please visit our [website](#).