



SZABO SCANDIC

Part of Europa Biosite

Produktinformation



Forschungsprodukte & Biochemikalien



Zellkultur & Verbrauchsmaterial



Diagnostik & molekulare Diagnostik



Laborgeräte & Service

Weitere Information auf den folgenden Seiten!
See the following pages for more information!



Lieferung & Zahlungsart

siehe unsere [Liefer- und Versandbedingungen](#)

Zuschläge

- Mindermengenzuschlag
- Trockeneiszuschlag
- Gefahrgutzuschlag
- Expressversand

SZABO-SCANDIC HandelsgmbH

Quellenstraße 110, A-1100 Wien

T. +43(0)1 489 3961-0

F. +43(0)1 489 3961-7

mail@szabo-scandic.com

www.szabo-scandic.com

[linkedin.com/company/szaboscandic](https://www.linkedin.com/company/szaboscandic) 

SLC22A14 antibody

Cat No. GTX00905

Host	Rabbit
Clonality	Polyclonal
Isotype	IgG
Application	WB, ICC/IF, IHC-P
Reactivity	Mouse

Package
50 µg

APPLICATION

Application Note

*Optimal dilutions/concentrations should be determined by the researcher.

Suggested dilution	Dilution
WB	1-2 µg /ml
ICC/IF	10 µg/ml
IHC-P	10 µg/ml

Not tested in other applications.

Specificity/Sensitivity We do not recommend use of this product for Human.

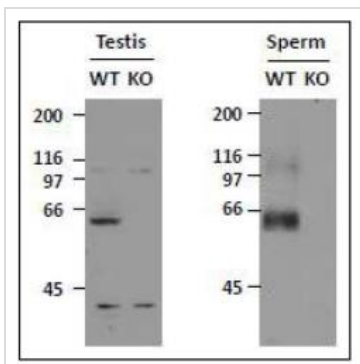
PROPERTIES

Form	Liquid
Buffer	PBS, 50% glycerol , 0.09% sodium azide
Storage	Store as concentrated solution. Centrifuge briefly prior to opening vial. For short-term storage (1-2 weeks), store at 4°C. For long-term storage, aliquot and store at -20°C or below. Avoid multiple freeze-thaw cycles.
Concentration	1 mg/ml (Please refer to the vial label for the specific concentration.)
Immunogen	Synthetic peptide corresponding to mouse Slc22a14 protein aa 615-629, PKMDLPVQSLKAQPP, conjugated with KLH
Purification	Purified by antigen-affinity chromatography
Conjugation	Unconjugated
Note	For laboratory use only. Not for any clinical, therapeutic, or diagnostic use in humans or animals. Not for animal or human consumption.



For full product information, images and publications, please visit our [website](#).

DATA IMAGES



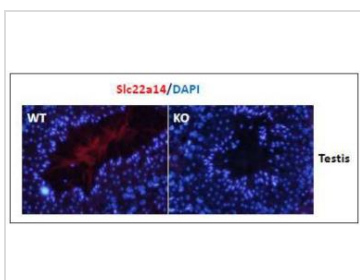
GTX00905 WB Image

WB analysis of mouse testis and sperm using GTX00905 SLC22A14 antibody.

WT : Wild-type mouse

KO : Knock-out mouse

Dilution : 1 µg/ml



GTX00905 IHC-P Image

IHC-P analysis of mouse testis tissue section (epidymis) using GTX00905 SLC22A14 antibody.

WT: Wild-type mouse

KO: Knock-out mouse

Dilution : 10 µg/ml



GTX00905 ICC/IF Image

ICC/IF analysis of mouse spermatozoa from cauda epididymis using GTX00905 SLC22A14 antibody.

Slc22a14 is predominantly localised to the principal piece.

Red : Primary antibody

Blue : DAPI

Dilution : 10 µg/ml



For full product information, images and publications, please visit our [website](#).