



# SZABO SCANDIC

Part of Europa Biosite

## Produktinformation



Forschungsprodukte & Biochemikalien



Zellkultur & Verbrauchsmaterial



Diagnostik & molekulare Diagnostik



Laborgeräte & Service

Weitere Information auf den folgenden Seiten!  
See the following pages for more information!



### Lieferung & Zahlungsart

siehe unsere [Liefer- und Versandbedingungen](#)

### Zuschläge

- Mindermengenzuschlag
- Trockeneiszuschlag
- Gefahrgutzuschlag
- Expressversand

### SZABO-SCANDIC HandelsgmbH

Quellenstraße 110, A-1100 Wien

T. +43(0)1 489 3961-0

F. +43(0)1 489 3961-7

[mail@szabo-scandic.com](mailto:mail@szabo-scandic.com)

[www.szabo-scandic.com](http://www.szabo-scandic.com)

[linkedin.com/company/szaboscandic](https://www.linkedin.com/company/szaboscandic) 

## Ferredoxin 1 + Ferredoxin 2 antibody

**Cat No. GTX00911**

<b>Host</b>	Rabbit
<b>Clonality</b>	Polyclonal
<b>Isotype</b>	IgG
<b>Application</b>	WB, ELISA
<b>Reactivity</b>	Arabidopsis thaliana, Zea mays

**Package**  
100 µg

## APPLICATION

**Application Note**

\*Optimal dilutions/concentrations should be determined by the researcher.

Suggested dilution	Dilution
WB	1:1000-1:5000
ELISA	Assay dependent

Not tested in other applications.

**Calculated MW** 15 kDa. ([Note](#))

**Specificity/Sensitivity** It reacts with plant Fd1 and Fd2 isoproteins including those of Maize and Arabidopsis.

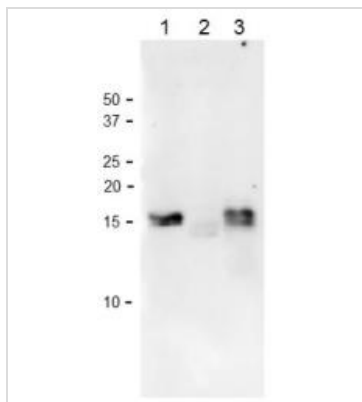
## PROPERTIES

<b>Form</b>	Liquid
<b>Buffer</b>	Filter-sterilized PBS, 50% glycerol
<b>Storage</b>	Store as concentrated solution. Centrifuge briefly prior to opening vial. For short-term storage (1-2 weeks), store at 4°C. For long-term storage, aliquot and store at -20°C or below. Avoid multiple freeze-thaw cycles.
<b>Concentration</b>	1 mg/ml (Please refer to the vial label for the specific concentration.)
<b>Immunogen</b>	Purified recombinant Maize Fd1 protein (full-size, no Tag)
<b>Purification</b>	Protein A purified
<b>Conjugation</b>	Unconjugated
<b>Note</b>	For laboratory use only. Not for any clinical, therapeutic, or diagnostic use in humans or animals. Not for animal or human consumption.



For full product information, images and publications, please visit our [website](#).

## DATA IMAGES

**GTX00911 WB Image**

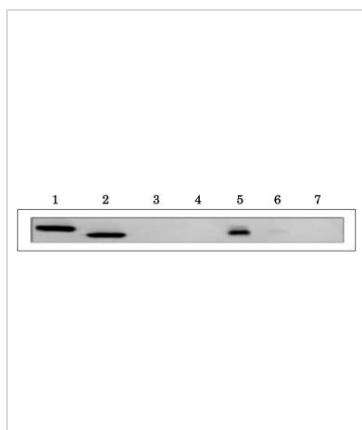
WB analysis of various samples using GTX00911 Ferredoxin 1 + Ferredoxin 2 antibody. Molecular mass of Maize Fds are about 12kDa, but migrates at the position around 15 kDa on SDS-PAGE.

Lane 1 : Recombinant Maize Fd1 protein

Lane 2 : Arabidopsis leaf extract (10 µg)

Lane 3 : Maize leaf extract (10 µg)

Dilution : 1:1000

**GTX00911 WB Image**

WB analysis of various samples using GTX00911 Ferredoxin 1 + Ferredoxin 2 antibody. The Maize leaf type specific antibody, anti-Ferredoxin-1 antibody also specifically reacts with Arabidopsis leaf type ferredoxins, 1 and 2 isoproteins.

Lane 1 : Recombinant At-Ferredoxin-1 (200 nmol)

Lane 2 : Recombinant At-Ferredoxin-2 (200 nmol)

Lane 3 : Recombinant At-Ferredoxin-3 (200 nmol)

Lane 4 : Recombinant At-Ferredoxin-4 (20 nmol)

Lane 5 : Leaf extract of Arabidopsis, soluble fraction with 70% saturated ammonium sulfate

Lane 6 : Leaf extract of Arabidopsis, insoluble fraction with 70% saturated ammonium sulfate

Lane 7 : Root extract of Arabidopsis



For full product information, images and publications, please visit our [website](#).