



SZABO SCANDIC

Part of Europa Biosite

Produktinformation



Forschungsprodukte & Biochemikalien



Zellkultur & Verbrauchsmaterial



Diagnostik & molekulare Diagnostik



Laborgeräte & Service

Weitere Information auf den folgenden Seiten!
See the following pages for more information!



Lieferung & Zahlungsart

siehe unsere [Liefer- und Versandbedingungen](#)

Zuschläge

- Mindermengenzuschlag
- Trockeneiszuschlag
- Gefahrgutzuschlag
- Expressversand

SZABO-SCANDIC HandelsgmbH

Quellenstraße 110, A-1100 Wien

T. +43(0)1 489 3961-0

F. +43(0)1 489 3961-7

mail@szabo-scandic.com

www.szabo-scandic.com

[linkedin.com/company/szaboscandic](https://www.linkedin.com/company/szaboscandic) 

Glutamine Synthetase antibody

Cat No. GTX00924

Host	Rabbit
Clonality	Polyclonal
Isotype	IgG
Application	WB, ELISA
Reactivity	Arabidopsis thaliana, Spinach, Zea mays

Package
100 µg

APPLICATION

Application Note

*Optimal dilutions/concentrations should be determined by the researcher.

Suggested dilution	Dilution
WB	1:1000-1:5000
ELISA	Assay dependent

Not tested in other applications.

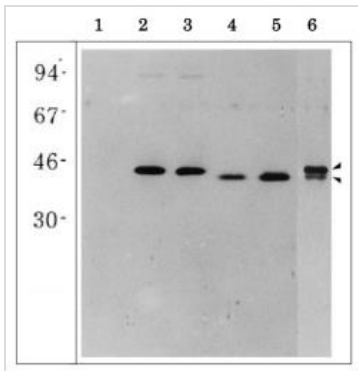
PROPERTIES

Form	Liquid
Buffer	Filter-sterilized PBS, 50% glycerol
Storage	Store as concentrated solution. Centrifuge briefly prior to opening vial. For short-term storage (1-2 weeks), store at 4°C. For long-term storage, aliquot and store at -20°C or below. Avoid multiple freeze-thaw cycles.
Concentration	2 mg/ml (Please refer to the vial label for the specific concentration.)
Immunogen	Purified recombinant maize GS1-1 (Glutamin synthetase, root isozyme 1) protein (full-size, no-tag attached)
Purification	Protein A/G purified
Conjugation	Unconjugated
Note	For laboratory use only. Not for any clinical, therapeutic, or diagnostic use in humans or animals. Not for animal or human consumption.



For full product information, images and publications, please visit our [website](#).

DATA IMAGES

**GTX00924 WB Image**

WB analysis of various samples using GTX00924 Glutamine Synthetase antibody. The lower band is ammonia induced GS.

Lane 1 : Negative control without recombinant GS

Lane 2 : GS1-1 expressing extract

Lane 3 : GS1-2 expressing extract

Lane 4 : GS1-3 expressing extract

Lane 5 : GS1-4 expressing extract

Lane 6 : Maize root extract treated with ammonia



For full product information, images and publications, please visit our [website](#).