



SZABO SCANDIC

Part of Europa Biosite

Produktinformation



Forschungsprodukte & Biochemikalien



Zellkultur & Verbrauchsmaterial



Diagnostik & molekulare Diagnostik



Laborgeräte & Service

Weitere Information auf den folgenden Seiten!
See the following pages for more information!



Lieferung & Zahlungsart

siehe unsere [Liefer- und Versandbedingungen](#)

Zuschläge

- Mindermengenzuschlag
- Trockeneiszuschlag
- Gefahrgutzuschlag
- Expressversand

SZABO-SCANDIC HandelsgmbH

Quellenstraße 110, A-1100 Wien

T. +43(0)1 489 3961-0

F. +43(0)1 489 3961-7

mail@szabo-scandic.com

www.szabo-scandic.com

[linkedin.com/company/szaboscandic](https://www.linkedin.com/company/szaboscandic) 

Sulfite Reductase antibody

Cat No. GTX00926

| | |
|--------------------|-------------------------------------|
| Host | Rabbit |
| Clonality | Polyclonal |
| Isotype | IgG |
| Application | WB, ELISA |
| Reactivity | Arabidopsis thaliana, Zea mays, Pea |

Package
200 µg

APPLICATION

Application Note

*Optimal dilutions/concentrations should be determined by the researcher.

| Suggested dilution | Dilution |
|--------------------|-----------------|
| WB | 1:1000-1:5000 |
| ELISA | Assay dependent |

Not tested in other applications.

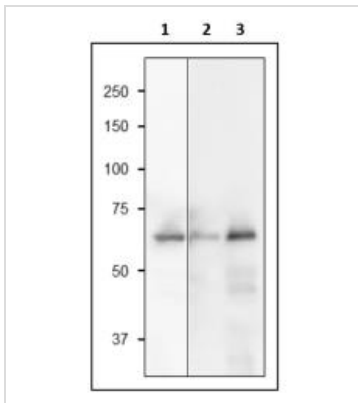
PROPERTIES

| | |
|----------------------|--|
| Form | Liquid |
| Buffer | Filter-sterilized PBS, 50% glycerol |
| Storage | Store as concentrated solution. Centrifuge briefly prior to opening vial. For short-term storage (1-2 weeks), store at 4°C. For long-term storage, aliquot and store at -20°C or below. Avoid multiple freeze-thaw cycles. |
| Concentration | 4 mg/ml (Please refer to the vial label for the specific concentration.) |
| Immunogen | Purified recombinant maize SiR protein (full-size, no-tag attached). The sequence identity between maize and Arabidopsis SiR is 77%. |
| Purification | Protein A purified |
| Conjugation | Unconjugated |
| Note | For laboratory use only. Not for any clinical, therapeutic, or diagnostic use in humans or animals. Not for animal or human consumption. |



For full product information, images and publications, please visit our [website](#).

DATA IMAGES

**GTX00926 WB Image**

WB analysis of various samples using GTX00926 Sulfite Reductase antibody. Molecular mass of SiR is 72 kDa (Arabidopsis), 70 kDa (Maize).

Lane 1 : Recombinat maize SiR protein

Lane 2 : Arabidopsis leaf extract (10 µg)

Lane 3 : Maize leaf extract (10 µg)

Dilution : 1:1000



For full product information, images and publications, please visit our [website](#).