



SZABO SCANDIC

Part of Europa Biosite

Produktinformation



Forschungsprodukte & Biochemikalien



Zellkultur & Verbrauchsmaterial



Diagnostik & molekulare Diagnostik



Laborgeräte & Service

Weitere Information auf den folgenden Seiten!
See the following pages for more information!



Lieferung & Zahlungsart

siehe unsere [Liefer- und Versandbedingungen](#)

Zuschläge

- Mindermengenzuschlag
- Trockeneiszuschlag
- Gefahrgutzuschlag
- Expressversand

SZABO-SCANDIC HandelsgmbH

Quellenstraße 110, A-1100 Wien

T. +43(0)1 489 3961-0

F. +43(0)1 489 3961-7

mail@szabo-scandic.com

www.szabo-scandic.com

[linkedin.com/company/szaboscandic](https://www.linkedin.com/company/szaboscandic) 

Cytochrome f antibody

Cat No. GTX00930

Host	Rabbit
Clonality	Polyclonal
Isotype	IgG
Application	WB, ELISA
Reactivity	Arabidopsis thaliana, Spinach, Zea mays

Package
200 µg

APPLICATION

Application Note

*Optimal dilutions/concentrations should be determined by the researcher.

Suggested dilution	Dilution
WB	1:1000-1:5000
ELISA	Assay dependent

Not tested in other applications.

Calculated MW 35 kDa. ([Note](#))

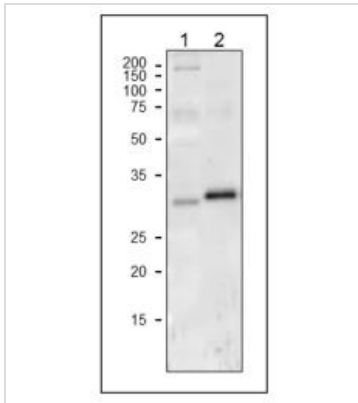
PROPERTIES

Form	Liquid
Buffer	Filter-sterilized PBS, 50% glycerol
Storage	Store as concentrated solution. Centrifuge briefly prior to opening vial. For short-term storage (1-2 weeks), store at 4°C. For long-term storage, aliquot and store at -20°C or below. Avoid multiple freeze-thaw cycles.
Concentration	4 mg/ml (Please refer to the vial label for the specific concentration.)
Immunogen	Recombinant Spinach Cytochrome f expressed in E. coli
Purification	Protein A purified
Conjugation	Unconjugated
Note	For laboratory use only. Not for any clinical, therapeutic, or diagnostic use in humans or animals. Not for animal or human consumption.



For full product information, images and publications, please visit our [website](#).

DATA IMAGES

**GTX00930 WB Image**

WB analysis of various samples using GTX00930 Cytochrome f antibody. Molecular masses of maize Cyt f is 35 kDa (Arabidopsis), 36 kDa (maize). The differences between the predicted sizes and WB data reflect signal peptide removal in mature proteins.

Lane 1 : Arabidopsis leaf extract

Lane 2 : Maize leaf extract

Dilution : 1:1000

Loading : 10 µg



For full product information, images and publications, please visit our [website](#).