



SZABO SCANDIC

Part of Europa Biosite

Produktinformation



Forschungsprodukte & Biochemikalien



Zellkultur & Verbrauchsmaterial



Diagnostik & molekulare Diagnostik



Laborgeräte & Service

Weitere Information auf den folgenden Seiten!
See the following pages for more information!



Lieferung & Zahlungsart

siehe unsere [Liefer- und Versandbedingungen](#)

Zuschläge

- Mindermengenzuschlag
- Trockeneiszuschlag
- Gefahrgutzuschlag
- Expressversand

SZABO-SCANDIC HandelsgmbH

Quellenstraße 110, A-1100 Wien

T. +43(0)1 489 3961-0

F. +43(0)1 489 3961-7

mail@szabo-scandic.com

www.szabo-scandic.com

[linkedin.com/company/szaboscandic](https://www.linkedin.com/company/szaboscandic) 

Sucrose-Phosphate Synthase antibody

Cat No. GTX00931

Host	Rabbit
Clonality	Polyclonal
Isotype	IgG
Application	WB, ELISA
Reactivity	Zea mays, Sugarcane

Package
200 µg

APPLICATION

Application Note

*Optimal dilutions/concentrations should be determined by the researcher.

Suggested dilution	Dilution
WB	1:500-1:2000
ELISA	Assay dependent

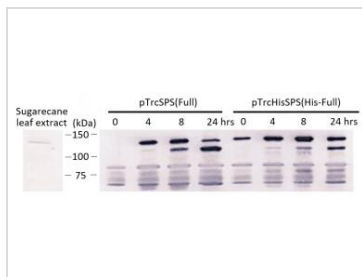
Not tested in other applications.

PROPERTIES

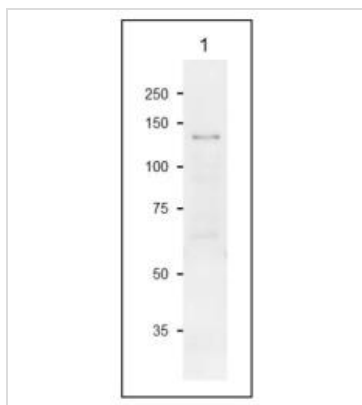
Form	Liquid
Buffer	Filter-sterilized PBS, 50% glycerol
Storage	Store as concentrated solution. Centrifuge briefly prior to opening vial. For short-term storage (1-2 weeks), store at 4°C. For long-term storage, aliquot and store at -20°C or below. Avoid multiple freeze-thaw cycles.
Concentration	4 mg/ml (Please refer to the vial label for the specific concentration.)
Immunogen	Purified recombinant sugarcane SPS1 protein (C-terminal 362 amino acids with His6 Tag at the N-terminus)
Purification	Protein A/G purified
Conjugation	Unconjugated
Note	For laboratory use only. Not for any clinical, therapeutic, or diagnostic use in humans or animals. Not for animal or human consumption.



For full product information, images and publications, please visit our [website](#).

DATA IMAGES

GTX00931 WB Image

WB analysis of E. coli transformed with SPS 1 overexpressing plasmid: pTrcSPS (full length of SPS) or pTrcHisSPS (full length with His6 Tag) and were harvested at the indicated time points after IPTG induction using GTX00931 Sucrose-Phosphate Synthase antibody. The lower band is a truncated SPS protein. Molecular size markers in the 2nd lane are 150, 100 and 75 kDa.


GTX00931 WB Image

WB analysis of maize leaf extract using GTX00931 Sucrose-Phosphate Synthase antibody.
 Dilution : 1:500
 Loading : 20 µg



For full product information, images and publications, please visit our [website](#).