



SZABO SCANDIC

Part of Europa Biosite

Produktinformation



Forschungsprodukte & Biochemikalien



Zellkultur & Verbrauchsmaterial



Diagnostik & molekulare Diagnostik



Laborgeräte & Service

Weitere Information auf den folgenden Seiten!
See the following pages for more information!



Lieferung & Zahlungsart

siehe unsere [Liefer- und Versandbedingungen](#)

Zuschläge

- Mindermengenzuschlag
- Trockeneiszuschlag
- Gefahrgutzuschlag
- Expressversand

SZABO-SCANDIC HandelsgmbH

Quellenstraße 110, A-1100 Wien

T. +43(0)1 489 3961-0

F. +43(0)1 489 3961-7

mail@szabo-scandic.com

www.szabo-scandic.com

[linkedin.com/company/szaboscandic](https://www.linkedin.com/company/szaboscandic) 

TGG1 / Myrosinase 1 antibody

Cat No. GTX00932

Host	Rabbit
Clonality	Polyclonal
Isotype	IgG
Application	WB, ICC/IF, ELISA, EM, IHC
Reactivity	Arabidopsis thaliana

Package
200 µg

APPLICATION

Application Note

*Optimal dilutions/concentrations should be determined by the researcher.

Suggested dilution	Dilution
WB	1:1000-1:3000
ICC/IF	Assay dependent
ELISA	Assay dependent
EM	1:1000-1:2500
IHC	1:500-1:1000

Not tested in other applications.

Calculated MW 61 kDa. ([Note](#))

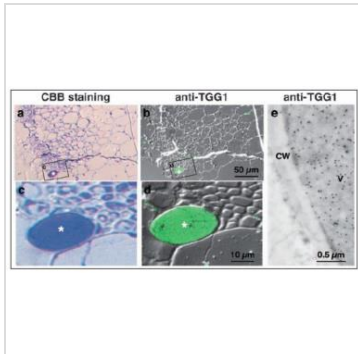
PROPERTIES

Form	Liquid
Buffer	Filter-sterilized PBS, 50% glycerol
Storage	Store as concentrated solution. Centrifuge briefly prior to opening vial. For short-term storage (1-2 weeks), store at 4°C. For long-term storage, aliquot and store at -20°C or below. Avoid multiple freeze-thaw cycles.
Concentration	2 mg/ml (Please refer to the vial label for the specific concentration.)
Immunogen	A synthetic peptide, AQNNQTIVPSDVHT, corresponding to TGG1 protein (353-366) of A. thaliana, conjugated with bovine serum albumin
Purification	Protein A purified From serum
Conjugation	Unconjugated
Note	For laboratory use only. Not for any clinical, therapeutic, or diagnostic use in humans or animals. Not for animal or human consumption.



For full product information, images and publications, please visit our [website](#).

DATA IMAGES

**GTX00932 ICC/IF Image**

ICC/IF analysis of Arabidopsis rosette leaves (48-day-old plants) using GTX00932 TGG1 / Myrosinase 1 antibody. Asterisks show myrosin cells.

CW: cell wall; V: vacuole

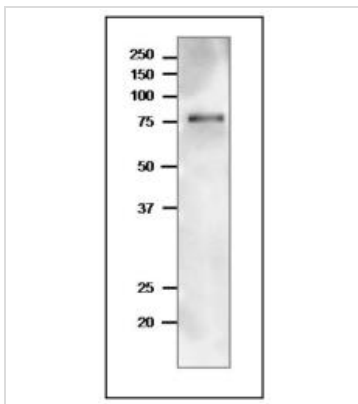
(a, c): stained with CBB

(b,d): Primary antibody

c and d are enlarged images of the boxed area of a and b, respectively.

(e): Ultrathin sections were mounted on Formvar-coated nickel grid by immunoelectron microscopy.

Dilution : 1:1000

**GTX00932 WB Image**

WB analysis of Arabidopsis leaf extract using GTX00932 TGG1 / Myrosinase 1 antibody. Molecular mass of TGG1 is 61 kDa from the amino acid sequence. The protein undergoes modifications such as elimination of signal peptide and glycosylation at 9 positions, which changes molecular mass in mature form.

Dilution : 1:1000

Loading : 10 μg



For full product information, images and publications, please visit our [website](#).