



# SZABO SCANDIC

Part of Europa Biosite

## Produktinformation



Forschungsprodukte & Biochemikalien



Zellkultur & Verbrauchsmaterial



Diagnostik & molekulare Diagnostik



Laborgeräte & Service

Weitere Information auf den folgenden Seiten!  
See the following pages for more information!



### Lieferung & Zahlungsart

siehe unsere [Liefer- und Versandbedingungen](#)

### Zuschläge

- Mindermengenzuschlag
- Trockeneiszuschlag
- Gefahrgutzuschlag
- Expressversand

### SZABO-SCANDIC HandelsgmbH

Quellenstraße 110, A-1100 Wien

T. +43(0)1 489 3961-0

F. +43(0)1 489 3961-7

[mail@szabo-scandic.com](mailto:mail@szabo-scandic.com)

[www.szabo-scandic.com](http://www.szabo-scandic.com)

[linkedin.com/company/szaboscandic](https://www.linkedin.com/company/szaboscandic) 

## TGG2 / Myrosinase 2 antibody

Cat No. GTX00933

<b>Host</b>	Rabbit
<b>Clonality</b>	Polyclonal
<b>Isotype</b>	IgG
<b>Application</b>	WB, ELISA, EM
<b>Reactivity</b>	Arabidopsis thaliana

Package  
200 µg

## APPLICATION

## Application Note

\*Optimal dilutions/concentrations should be determined by the researcher.

Suggested dilution	Dilution
WB	1:1000
ELISA	Assay dependent
EM	Assay dependent

Not tested in other applications.

<b>Calculated MW</b>	63 kDa. ( <a href="#">Note</a> )
<b>Specificity/Sensitivity</b>	It reacts with TGG2 of arabidopsis but does not react with TGG1 of arabidopsis.

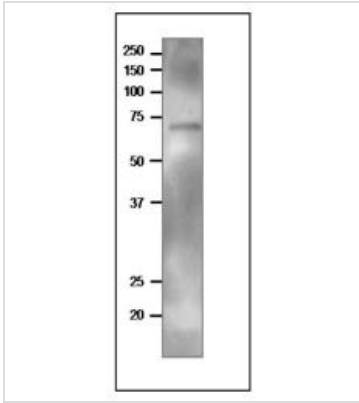
## PROPERTIES

<b>Form</b>	Liquid
<b>Buffer</b>	Filter-sterilized PBS, 50% glycerol
<b>Storage</b>	Store as concentrated solution. Centrifuge briefly prior to opening vial. For short-term storage (1-2 weeks), store at 4°C. For long-term storage, aliquot and store at -20°C or below. Avoid multiple freeze-thaw cycles.
<b>Concentration</b>	1 mg/ml (Please refer to the vial label for the specific concentration.)
<b>Immunogen</b>	A synthetic peptide, AHALDPSPEKLT, corresponding to TGG2 protein (363-376)) of A. thaliana, conjugated with bovine serum albumin This region of TGG2 has little homology with the corresponding region of TGG1.
<b>Purification</b>	Protein A/G purified
<b>Conjugation</b>	Unconjugated
<b>Note</b>	For laboratory use only. Not for any clinical, therapeutic, or diagnostic use in humans or animals. Not for animal or human consumption.



For full product information, images and publications, please visit our [website](#).

## DATA IMAGES

**GTX00933 WB Image**

WB analysis of Arabidopsis leaf extract using GTX00933 TGG2 / Myrosinase 2 antibody. Molecular mass calculated from the amino acid sequence is 63 kDa, and the signal peptide of 28 amino acids is removed and three glycosylation sites have been identified in the mature form.

Dilution : 1:1000



For full product information, images and publications, please visit our [website](#).