



SZABO SCANDIC

Part of Europa Biosite

Produktinformation



Forschungsprodukte & Biochemikalien



Zellkultur & Verbrauchsmaterial



Diagnostik & molekulare Diagnostik



Laborgeräte & Service

Weitere Information auf den folgenden Seiten!
See the following pages for more information!



Lieferung & Zahlungsart

siehe unsere [Liefer- und Versandbedingungen](#)

Zuschläge

- Mindermengenzuschlag
- Trockeneiszuschlag
- Gefahrgutzuschlag
- Expressversand

SZABO-SCANDIC HandelsgmbH

Quellenstraße 110, A-1100 Wien

T. +43(0)1 489 3961-0

F. +43(0)1 489 3961-7

mail@szabo-scandic.com

www.szabo-scandic.com

[linkedin.com/company/szaboscandic](https://www.linkedin.com/company/szaboscandic) 

2S3 albumin antibody

Cat No. GTX00935

Host	Rabbit
Clonality	Polyclonal
Isotype	IgG
Application	WB, ELISA, EM
Reactivity	Arabidopsis thaliana

Package
200 µg

APPLICATION

Application Note

*Optimal dilutions/concentrations should be determined by the researcher.

Suggested dilution	Dilution
WB	1:10000-1:20000
ELISA	Assay dependent
EM	1:500

Not tested in other applications.

Calculated MW 19 kDa. ([Note](#))

Specificity/Sensitivity It reacts with the precursor and large subunit of Arabidopsis thaliana 2S albumin.

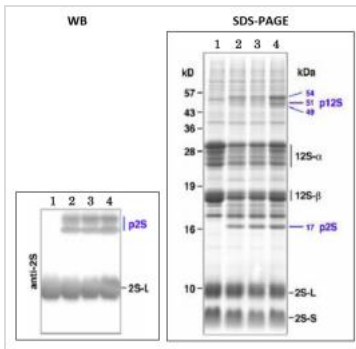
PROPERTIES

Form	Liquid
Buffer	Filter-sterilized PBS, 50% glycerol
Storage	Store as concentrated solution. Centrifuge briefly prior to opening vial. For short-term storage (1-2 weeks), store at 4°C. For long-term storage, aliquot and store at -20°C or below. Avoid multiple freeze-thaw cycles.
Concentration	2 mg/ml (Please refer to the vial label for the specific concentration.)
Immunogen	Synthetic peptide (C)AARAVSLQGQHGPFQSRKIY, whose sequence is derived from the large subunit of Arabidopsis 2S3 albumin
Purification	Protein A/G purified From serum
Conjugation	Unconjugated
Note	For laboratory use only. Not for any clinical, therapeutic, or diagnostic use in humans or animals. Not for animal or human consumption.



For full product information, images and publications, please visit our [website](#).

DATA IMAGES

**GTX00935 WB Image**

WB analysis of Arabidopsis dry seeds extract using GTX00935 2S3 albumin antibody.

p2S: Precursor of 2S

2S-L : Large subunit of 2S

Lane 1 : Dry seeds of wildtype

Lane 2-4 : mag2-2: Dry seeds Mutants that accumulate the precursors of major storage proteins (mag5-1, mag2-1, and mag4-1)

Dilution : 1:2500



For full product information, images and publications, please visit our [website](#).