



SZABO SCANDIC

Part of Europa Biosite

Produktinformation



Forschungsprodukte & Biochemikalien



Zellkultur & Verbrauchsmaterial



Diagnostik & molekulare Diagnostik



Laborgeräte & Service

Weitere Information auf den folgenden Seiten!
See the following pages for more information!



Lieferung & Zahlungsart

siehe unsere [Liefer- und Versandbedingungen](#)

Zuschläge

- Mindermengenzuschlag
- Trockeneiszuschlag
- Gefahrgutzuschlag
- Expressversand

SZABO-SCANDIC HandelsgmbH

Quellenstraße 110, A-1100 Wien

T. +43(0)1 489 3961-0

F. +43(0)1 489 3961-7

mail@szabo-scandic.com

www.szabo-scandic.com

[linkedin.com/company/szaboscandic](https://www.linkedin.com/company/szaboscandic) 

PARP (cleaved) antibody [GT1181]

Cat No. GTX00943

Host	Rabbit
Clonality	Monoclonal
Isotype	IgG
Application	WB
Reactivity	Human, Mouse

Reference (2)

Package

100 µl

APPLICATION

Application Note

*Optimal dilutions/concentrations should be determined by the researcher.

Suggested dilution	Dilution
WB	1:500-1:2000

Not tested in other applications.

Calculated MW	113 kDa. (Note)
Observed MW	~25 kDa. The observed M.W. is based on the following publication. PMID: 31045193
Specificity/Sensitivity	This antibody is specific for cleaved PARP (~25kDa). It does not recognize full-length (~116kDa) and the large fragment (~89 kDa).

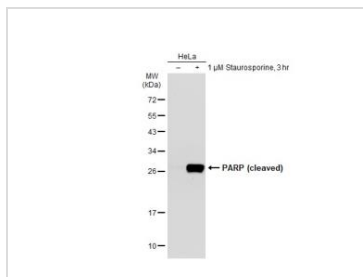
PROPERTIES

Form	Liquid
Buffer	PBS (pH 7.3), 0.02% sodium azide, 50% glycerol
Storage	Store as concentrated solution. Centrifuge briefly prior to opening vial. For short-term storage (1-2 weeks), store at 4°C. For long-term storage, aliquot and store at -20°C or below. Avoid multiple freeze-thaw cycles.
Concentration	Batch dependent (Please refer to the vial label for the specific concentration.)
Immunogen	A synthesized peptide derived from human Cleaved PARP.
Purification	Purified by affinity chromatography
Conjugation	Unconjugated
Note	For laboratory use only. Not for any clinical, therapeutic, or diagnostic use in humans or animals. Not for animal or human consumption.



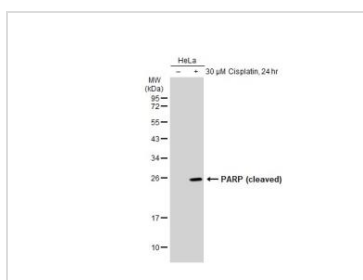
For full product information, images and publications, please visit our [website](#).

DATA IMAGES



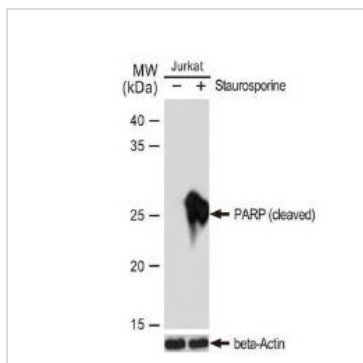
GTX00943 WB Image

Untreated (-) and treated (+) HeLa whole cell extracts (30 μg) were separated by 12% SDS-PAGE, and the membrane was blotted with PARP (cleaved) antibody [GT1181] (GTX00943) diluted at 1:500. The HRP-conjugated anti-rabbit IgG antibody (GTX213110-01) was used to detect the primary antibody.



GTX00943 WB Image

Untreated (-) and treated (+) HeLa whole cell extracts (30 μg) were separated by 12% SDS-PAGE, and the membrane was blotted with PARP (cleaved) antibody [GT1181] (GTX00943) diluted at 1:500. The HRP-conjugated anti-rabbit IgG antibody (GTX213110-01) was used to detect the primary antibody.

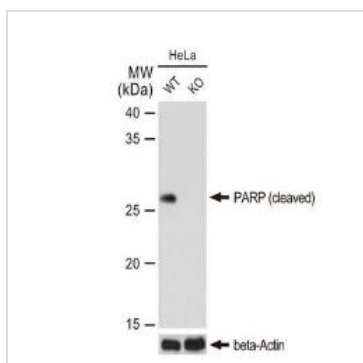


GTX00943 WB Image

WB analysis of Jurkat cell extracts with/without Staurosporine (1 μM, RT, 3 hrs) treatment using GTX00943 PARP (cleaved) antibody [GT1181].

Dilution : 1:1000

Loading : 25 μg



GTX00943 WB Image

WB analysis of wild-type (WT) and PARP (cleaved) knockout (KO) HeLa cell extracts using GTX00943 PARP (cleaved) antibody [GT1181].

Dilution : 1:1000

Laoding : 25 μg



For full product information, images and publications, please visit our [website](#).