



SZABO SCANDIC

Part of Europa Biosite

Produktinformation



Forschungsprodukte & Biochemikalien



Zellkultur & Verbrauchsmaterial



Diagnostik & molekulare Diagnostik



Laborgeräte & Service

Weitere Information auf den folgenden Seiten!
See the following pages for more information!



Lieferung & Zahlungsart

siehe unsere [Liefer- und Versandbedingungen](#)

Zuschläge

- Mindermengenzuschlag
- Trockeneiszuschlag
- Gefahrgutzuschlag
- Expressversand

SZABO-SCANDIC HandelsgmbH

Quellenstraße 110, A-1100 Wien

T. +43(0)1 489 3961-0

F. +43(0)1 489 3961-7

mail@szabo-scandic.com

www.szabo-scandic.com

[linkedin.com/company/szaboscandic](https://www.linkedin.com/company/szaboscandic) 

LC3B antibody [GT1187]

Cat No. GTX00949

Host	Rabbit
Clonality	Monoclonal
Isotype	IgG
Application	WB, ICC/IF, IHC-P
Reactivity	Human, Mouse, Rat

Package
100 µl

APPLICATION

Application Note

*Optimal dilutions/concentrations should be determined by the researcher.

Suggested dilution	Dilution
WB	1:500-1:2000
ICC/IF	1:50-1:200
IHC-P	1:50-1:200

Not tested in other applications.

Calculated MW	15 kDa. (Note)
Observed MW	14, 16 kDa. The observed M.W. is based on the following publication. PMID: 31576176

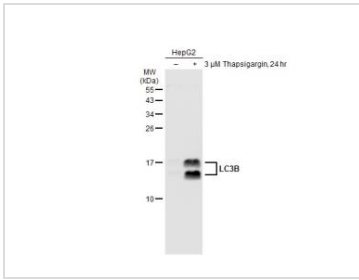
PROPERTIES

Form	Liquid
Buffer	PBS (pH 7.3), 0.02% sodium azide, 50% glycerol
Storage	Store as concentrated solution. Centrifuge briefly prior to opening vial. For short-term storage (1-2 weeks), store at 4°C. For long-term storage, aliquot and store at -20°C or below. Avoid multiple freeze-thaw cycles.
Concentration	Batch dependent (Please refer to the vial label for the specific concentration.)
Immunogen	A synthetic peptide of human LC3B.
Purification	Purified by affinity chromatography
Conjugation	Unconjugated
Note	For laboratory use only. Not for any clinical, therapeutic, or diagnostic use in humans or animals. Not for animal or human consumption.



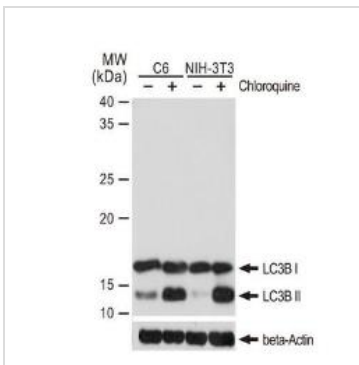
For full product information, images and publications, please visit our [website](#).

DATA IMAGES



GTX00949 WB Image

Untreated (-) and treated (+) HepG2 whole cell extracts (30 μg) were separated by 15% SDS-PAGE, and the membrane was blotted with LC3B antibody [GT1187] (GTX00949) diluted at 1:500. The HRP-conjugated anti-rabbit IgG antibody (GTX213110-01) was used to detect the primary antibody.

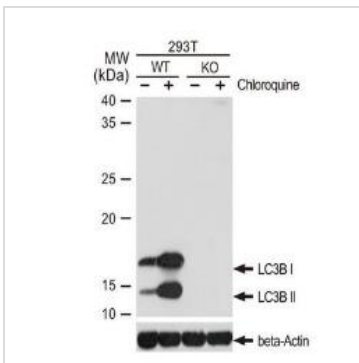


GTX00949 WB Image

WB analysis of C6 and NIH-3T3 cell extracts with/without Chloroquine (50 μM, 37°C, 20 hrs) treatment using GTX00949 LC3B antibody [GT1187].

Dilution : 1:1000

Loading : 25μg

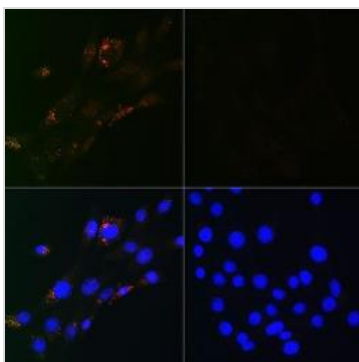


GTX00949 WB Image

WB analysis of wild-type (WT) and LC3B knockout (KO) 293T cell extracts with/without Chloroquine (50 μM, 37°C, 20 hrs) treatment using GTX00949 LC3B antibody [GT1187].

Dilution : 1:1000

Loading : 25μg



GTX00949 ICC/IF Image

ICC/IF analysis of PFA-fixed NIH-3T3 cells with/without Chloroquine (50 μM, 37°C, 20 hrs) treatment using GTX00949 LC3B antibody [GT1187].

Right : untreated NIH-3T3 cells

Left : NIH-3T3 cells with 50 μM Chloroquine (20 hrs, 37°C) treatment

Orange : Primary antibody

Blue : DAPI

Dilution : 1:100



For full product information, images and publications, please visit our [website](http://www.genetex.com).