



# SZABO SCANDIC

Part of Europa Biosite

## Produktinformation



Forschungsprodukte & Biochemikalien



Zellkultur & Verbrauchsmaterial



Diagnostik & molekulare Diagnostik



Laborgeräte & Service

Weitere Information auf den folgenden Seiten!  
See the following pages for more information!



### Lieferung & Zahlungsart

siehe unsere [Liefer- und Versandbedingungen](#)

### Zuschläge

- Mindermengenzuschlag
- Trockeneiszuschlag
- Gefahrgutzuschlag
- Expressversand

### SZABO-SCANDIC HandelsgmbH

Quellenstraße 110, A-1100 Wien

T. +43(0)1 489 3961-0

F. +43(0)1 489 3961-7

[mail@szabo-scandic.com](mailto:mail@szabo-scandic.com)

[www.szabo-scandic.com](http://www.szabo-scandic.com)

[linkedin.com/company/szaboscandic](https://www.linkedin.com/company/szaboscandic) 

## Histone H3S10ph (phospho Ser10) antibody [GT1195]

**Cat No. GTX00957**

<b>Host</b>	Rabbit
<b>Clonality</b>	Monoclonal
<b>Isotype</b>	IgG
<b>Application</b>	WB, ICC/IF, IHC-P
<b>Reactivity</b>	Human, Mouse, Rat

**Package**  
100 µl

## APPLICATION

**Application Note**

\*Optimal dilutions/concentrations should be determined by the researcher.

Suggested dilution	Dilution
WB	1:500-1:2000
ICC/IF	1:50-1:200
IHC-P	1:50-1:200

Not tested in other applications.

**Calculated MW** 15 kDa. ([Note](#))

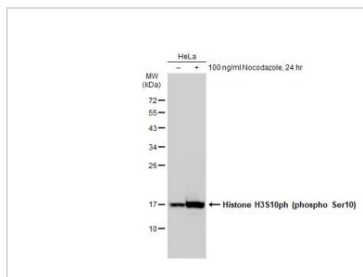
## PROPERTIES

<b>Form</b>	Liquid
<b>Buffer</b>	PBS (pH 7.3), 0.02% sodium azide, 50% glycerol
<b>Storage</b>	Store as concentrated solution. Centrifuge briefly prior to opening vial. For short-term storage (1-2 weeks), store at 4°C. For long-term storage, aliquot and store at -20°C or below. Avoid multiple freeze-thaw cycles.
<b>Concentration</b>	Batch dependent (Please refer to the vial label for the specific concentration.)
<b>Immunogen</b>	A synthesized peptide derived from human Phospho-Histone H3 (S10).
<b>Purification</b>	Purified by affinity chromatography
<b>Conjugation</b>	Unconjugated
<b>Note</b>	For laboratory use only. Not for any clinical, therapeutic, or diagnostic use in humans or animals. Not for animal or human consumption.



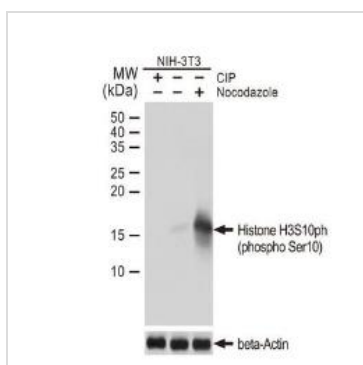
For full product information, images and publications, please visit our [website](#).

DATA IMAGES



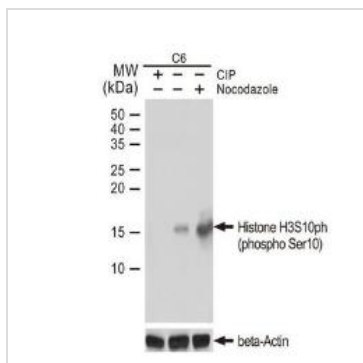
**GTX00957 WB Image**

Untreated (-) and treated (+) HeLa whole cell extracts (30 µg) were separated by 12% SDS-PAGE, and the membrane was blotted with Histone H3S10ph (phospho Ser10) antibody [GT1195] (GTX00957) diluted at 1:500. The HRP-conjugated anti-rabbit IgG antibody (GTX213110-01) was used to detect the primary antibody.



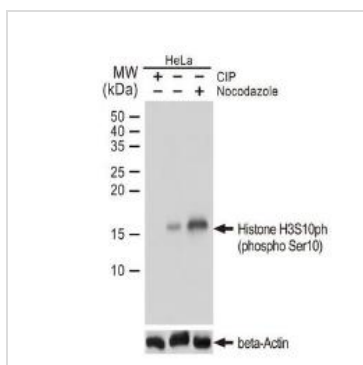
**GTX00957 WB Image**

WB analysis of NIH-3T3 cell extracts with/without nocodazole (50 ng/ml, 37°C, 20 hrs) treatment or CIP (20µl/400µl, 37°C, 1 hr) treatment using GTX00957 Histone H3S10ph (phospho Ser10) antibody [GT1195].  
Dilution : 1:1000  
Loading : 25µg



**GTX00957 WB Image**

WB analysis of C6 cell extracts with/without nocodazole (50 ng/ml, 37°C, 20 hrs) treatment or CIP (20µl/400µl, 37°C, 1 hr) treatment using GTX00957 Histone H3S10ph (phospho Ser10) antibody [GT1195].  
Dilution : 1:1000  
Loading : 25µg



**GTX00957 WB Image**

WB analysis of HeLa cell extracts with/without nocodazole (50 ng/ml, 37°C, 20 hrs) treatment or CIP (20µl/400µl, 37°C, 1 hr) treatment using GTX00957 Histone H3S10ph (phospho Ser10) antibody [GT1195].  
Dilution : 1:1000  
Loading : 25µg



For full product information, images and publications, please visit our [website](#).