



SZABO SCANDIC

Part of Europa Biosite

Produktinformation



Forschungsprodukte & Biochemikalien



Zellkultur & Verbrauchsmaterial



Diagnostik & molekulare Diagnostik



Laborgeräte & Service

Weitere Information auf den folgenden Seiten!
See the following pages for more information!



Lieferung & Zahlungsart

siehe unsere [Liefer- und Versandbedingungen](#)

Zuschläge

- Mindermengenzuschlag
- Trockeneiszuschlag
- Gefahrgutzuschlag
- Expressversand

SZABO-SCANDIC HandelsgmbH

Quellenstraße 110, A-1100 Wien

T. +43(0)1 489 3961-0

F. +43(0)1 489 3961-7

mail@szabo-scandic.com

www.szabo-scandic.com

[linkedin.com/company/szaboscandic](https://www.linkedin.com/company/szaboscandic) 

STAT1 (phospho Ser701) antibody [GT1197]

Cat No. GTX00959

Host	Rabbit
Clonality	Monoclonal
Isotype	IgG
Application	WB
Reactivity	Human, Mouse, Rat

Package
100 µl

APPLICATION

Application Note

*Optimal dilutions/concentrations should be determined by the researcher.

Suggested dilution	Dilution
WB	1:500-1:2000

Not tested in other applications.

Calculated MW 87 kDa. ([Note](#))

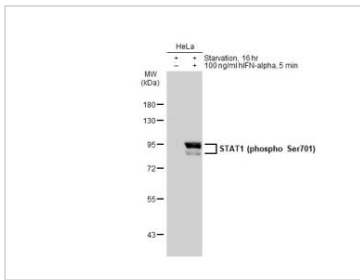
PROPERTIES

Form	Liquid
Buffer	PBS (pH 7.3), 0.02% sodium azide, 50% glycerol
Storage	Store as concentrated solution. Centrifuge briefly prior to opening vial. For short-term storage (1-2 weeks), store at 4°C. For long-term storage, aliquot and store at -20°C or below. Avoid multiple freeze-thaw cycles.
Concentration	Batch dependent (Please refer to the vial label for the specific concentration.)
Immunogen	A synthesized peptide derived from human STAT1.
Purification	Purified by affinity chromatography
Conjugation	Unconjugated
Note	For laboratory use only. Not for any clinical, therapeutic, or diagnostic use in humans or animals. Not for animal or human consumption.

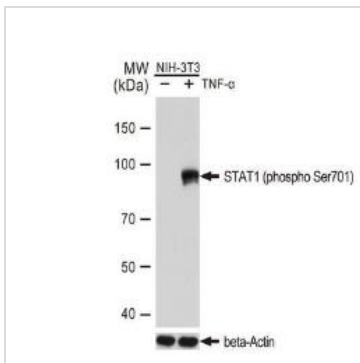


For full product information, images and publications, please visit our [website](#).

DATA IMAGES

**GTX00959 WB Image**

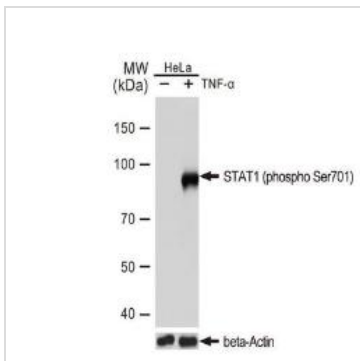
Untreated (-) and treated (+) HeLa whole cell extracts (30 μ g) were separated by 7.5% SDS-PAGE, and the membrane was blotted with STAT1 (phospho Ser701) antibody [GT1197] (GTX00959) diluted at 1:500. The HRP-conjugated anti-rabbit IgG antibody (GTX213110-01) was used to detect the primary antibody.

**GTX00959 WB Image**

WB analysis of NIH-3T3 cell extracts with/without TNF- α (20 ng/ml, 37°C, 30 min) treatment using GTX00959 STAT1 (phospho Ser701) antibody [GT1197].

Dilution : 1:1000

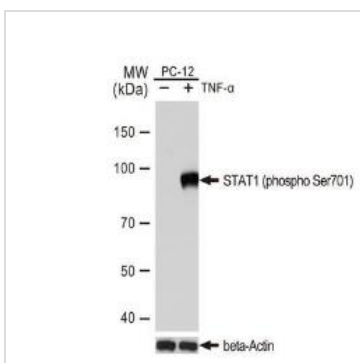
Loading : 25 μ g

**GTX00959 WB Image**

WB analysis of HeLa cell extracts with/without TNF- α (20 ng/ml, 37°C, 30 min) treatment using GTX00959 STAT1 (phospho Ser701) antibody [GT1197].

Dilution : 1:1000

Loading : 25 μ g

**GTX00959 WB Image**

WB analysis of PC-12 cell extracts with/without TNF- α (20 ng/ml, 37°C, 30 min) treatment using GTX00959 STAT1 (phospho Ser701) antibody [GT1197].

Dilution : 1:1000

Loading : 25 μ g



For full product information, images and publications, please visit our [website](#).