



SZABO SCANDIC

Part of Europa Biosite

Produktinformation



Forschungsprodukte & Biochemikalien



Zellkultur & Verbrauchsmaterial



Diagnostik & molekulare Diagnostik



Laborgeräte & Service

Weitere Information auf den folgenden Seiten!
See the following pages for more information!



Lieferung & Zahlungsart

siehe unsere [Liefer- und Versandbedingungen](#)

Zuschläge

- Mindermengenzuschlag
- Trockeneiszuschlag
- Gefahrgutzuschlag
- Expressversand

SZABO-SCANDIC HandelsgmbH

Quellenstraße 110, A-1100 Wien

T. +43(0)1 489 3961-0

F. +43(0)1 489 3961-7

mail@szabo-scandic.com

www.szabo-scandic.com

[linkedin.com/company/szaboscandic](https://www.linkedin.com/company/szaboscandic) 

SMAD3 (phospho Ser423/Ser425) antibody [GT1207]

Cat No. GTX00969

| | |
|--------------------|-------------------|
| Host | Rabbit |
| Clonality | Monoclonal |
| Isotype | IgG |
| Application | WB, IHC-P |
| Reactivity | Human, Mouse, Rat |

Package
100 µl

APPLICATION

Application Note

*Optimal dilutions/concentrations should be determined by the researcher.

| Suggested dilution | Dilution |
|--------------------|--------------|
| WB | 1:500-1:2000 |
| IHC-P | 1:50-1:200 |

Not tested in other applications.

Calculated MW 48 kDa. ([Note](#))

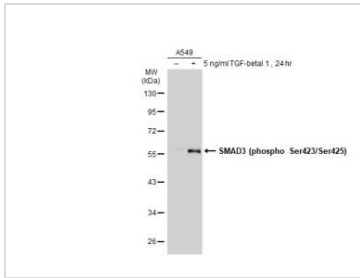
PROPERTIES

| | |
|----------------------|--|
| Form | Liquid |
| Buffer | PBS (pH 7.3), 0.02% sodium azide, 50% glycerol |
| Storage | Store as concentrated solution. Centrifuge briefly prior to opening vial. For short-term storage (1-2 weeks), store at 4°C. For long-term storage, aliquot and store at -20°C or below. Avoid multiple freeze-thaw cycles. |
| Concentration | Batch dependent (Please refer to the vial label for the specific concentration.) |
| Immunogen | A synthesized peptide derived from human Phospho-Smad3 (S423 + S425). |
| Purification | Purified by affinity chromatography |
| Conjugation | Unconjugated |
| Note | For laboratory use only. Not for any clinical, therapeutic, or diagnostic use in humans or animals. Not for animal or human consumption. |

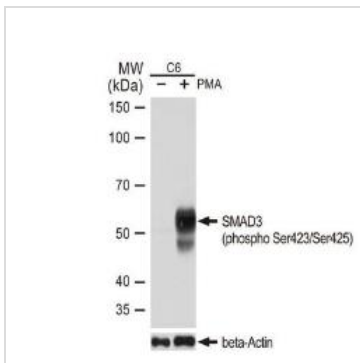


For full product information, images and publications, please visit our [website](#).

DATA IMAGES

**GTX00969 WB Image**

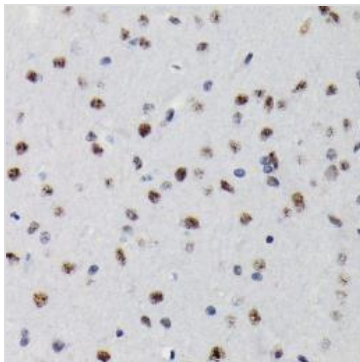
Untreated (-) and treated (+) A549 whole cell extracts (30 µg) were separated by 10% SDS-PAGE, and the membrane was blotted with SMAD3 (phospho Ser423/Ser425) antibody [GT1207] (GTX00969) diluted at 1:500. The HRP-conjugated anti-rabbit IgG antibody (GTX213110-01) was used to detect the primary antibody.

**GTX00969 WB Image**

WB analysis of C6 cell extracts with/without PMA/TPA (200 nM, 37°C, 10 min) treatment using GTX00969 SMAD3 (phospho Ser423/Ser425) antibody [GT1207].

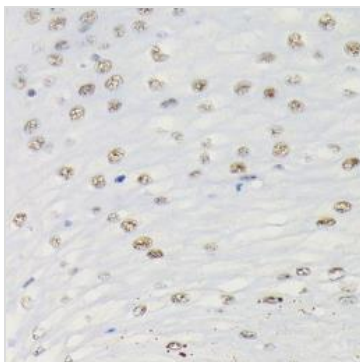
Dilution : 1:1000

Loading : 25µg

**GTX00969 IHC-P Image**

IHC-P analysis of rat brain tissue section using GTX00969 SMAD3 (phospho Ser423/Ser425) antibody [GT1207].

Dilution : 1:100

**GTX00969 IHC-P Image**

IHC-P analysis of human esophageal tissue section using GTX00969 SMAD3 (phospho Ser423/Ser425) antibody [GT1207].

Dilution : 1:100



For full product information, images and publications, please visit our [website](https://www.genetex.com).