



SZABO SCANDIC

Part of Europa Biosite

Produktinformation



Forschungsprodukte & Biochemikalien



Zellkultur & Verbrauchsmaterial



Diagnostik & molekulare Diagnostik



Laborgeräte & Service

Weitere Information auf den folgenden Seiten!
See the following pages for more information!



Lieferung & Zahlungsart

siehe unsere [Liefer- und Versandbedingungen](#)

Zuschläge

- Mindermengenzuschlag
- Trockeneiszuschlag
- Gefahrgutzuschlag
- Expressversand

SZABO-SCANDIC HandelsgmbH

Quellenstraße 110, A-1100 Wien

T. +43(0)1 489 3961-0

F. +43(0)1 489 3961-7

mail@szabo-scandic.com

www.szabo-scandic.com

[linkedin.com/company/szaboscandic](https://www.linkedin.com/company/szaboscandic) 

GSK3 beta (phospho Ser9) antibody [GT1209]

Cat No. GTX00971

Host	Rabbit
Clonality	Monoclonal
Isotype	IgG
Application	WB, IHC-P
Reactivity	Human, Mouse

Package
100 µl

APPLICATION

Application Note

*Optimal dilutions/concentrations should be determined by the researcher.

Suggested dilution	Dilution
WB	1:500-1:2000
IHC-P	1:50-1:200

Not tested in other applications.

Calculated MW 47 kDa. ([Note](#))

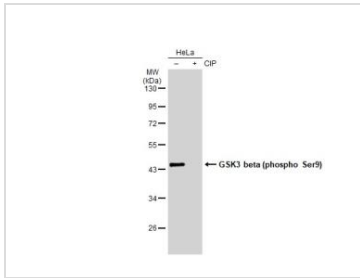
PROPERTIES

Form	Liquid
Buffer	PBS (pH 7.3), 0.02% sodium azide, 50% glycerol
Storage	Store as concentrated solution. Centrifuge briefly prior to opening vial. For short-term storage (1-2 weeks), store at 4°C. For long-term storage, aliquot and store at -20°C or below. Avoid multiple freeze-thaw cycles.
Concentration	Batch dependent (Please refer to the vial label for the specific concentration.)
Immunogen	A synthesized peptide derived from human Phospho-GSK3 beta (Ser9).
Purification	Purified by affinity chromatography
Conjugation	Unconjugated
Note	For laboratory use only. Not for any clinical, therapeutic, or diagnostic use in humans or animals. Not for animal or human consumption.

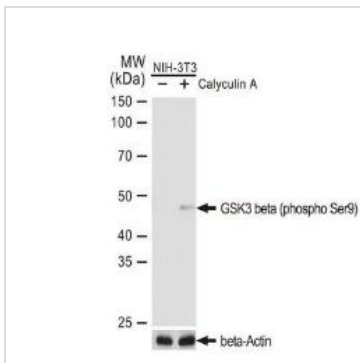


For full product information, images and publications, please visit our [website](#).

DATA IMAGES

**GTX00971 WB Image**

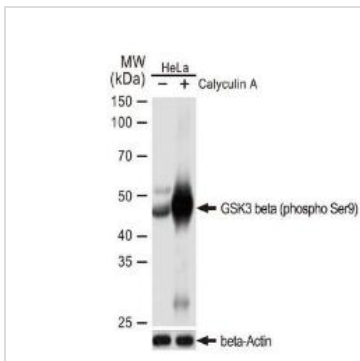
Untreated (-) and treated (+) HeLa whole cell extracts (30 µg) were separated by 10% SDS-PAGE, and the membrane was blotted with GSK3 beta (phospho Ser9) antibody [GT1209] (GTX00971) diluted at 1:500. The HRP-conjugated anti-rabbit IgG antibody (GTX213110-01) was used to detect the primary antibody.

**GTX00971 WB Image**

WB analysis of NIH-3T3 cell extracts with/without Calyculin A (100 nM, 37°C, 30 min) treatment after serum-starvation overnight using GTX00971 GSK3 beta (phospho Ser9) antibody [GT1209].

Dilution : 1:1000

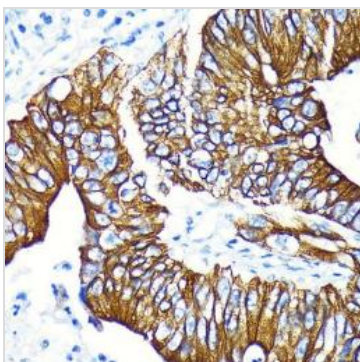
Loading : 25µg

**GTX00971 WB Image**

WB analysis of HeLa cell extracts with/without Calyculin A (100 nM, 37°C, 30 min) treatment after serum-starvation overnight using GTX00971 GSK3 beta (phospho Ser9) antibody [GT1209].

Dilution : 1:1000

Loading : 25µg

**GTX00971 IHC-P Image**

IHC-P analysis of human colon carcinoma tissue section using GTX00971 GSK3 beta (phospho Ser9) antibody [GT1209].

Dilution : 1:100



For full product information, images and publications, please visit our [website](http://www.genetex.com).