



SZABO SCANDIC

Part of Europa Biosite

Produktinformation



Forschungsprodukte & Biochemikalien



Zellkultur & Verbrauchsmaterial



Diagnostik & molekulare Diagnostik



Laborgeräte & Service

Weitere Information auf den folgenden Seiten!
See the following pages for more information!



Lieferung & Zahlungsart

siehe unsere [Liefer- und Versandbedingungen](#)

Zuschläge

- Mindermengenzuschlag
- Trockeneiszuschlag
- Gefahrgutzuschlag
- Expressversand

SZABO-SCANDIC HandelsgmbH

Quellenstraße 110, A-1100 Wien

T. +43(0)1 489 3961-0

F. +43(0)1 489 3961-7

mail@szabo-scandic.com

www.szabo-scandic.com

[linkedin.com/company/szaboscandic](https://www.linkedin.com/company/szaboscandic) 

TRAF4 antibody

Cat No. GTX00972

Host	Rabbit
Clonality	Polyclonal
Isotype	IgG
Application	WB, IHC-P
Reactivity	Human, Mouse, Rat

Package
100 µg

APPLICATION

Application Note

*Optimal dilutions/concentrations should be determined by the researcher.

Suggested dilution	Dilution
WB	0.1-0.5µg/ml
IHC-P	0.5-1µg/ml

Note : Antigen retrieval by heat

Not tested in other applications.

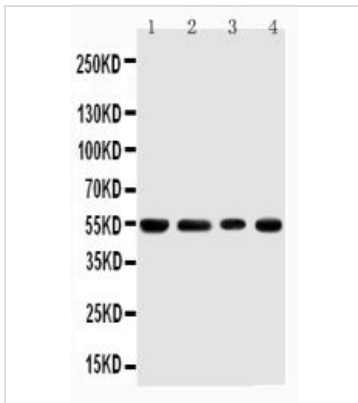
Calculated MW	54 kDa. (Note)
Specificity/Sensitivity	Superfamily members of TRAF4 are not reactive to this antibody.

PROPERTIES

Form	Liquid
Buffer	5mg BSA, 0.9mg NaCl, 0.2mg Na ₂ HPO ₄ , 0.05mg Thimerosal, 0.05mg sodium azide
Storage	Store as concentrated solution. Centrifuge briefly prior to opening vial. For short-term storage (1-2 weeks), store at 4°C. For long-term storage, aliquot and store at -20°C or below. Avoid multiple freeze-thaw cycles.
Concentration	0.5 mg/ml (Please refer to the vial label for the specific concentration.)
Immunogen	A synthetic peptide corresponding to a sequence at the C-terminus of human TRAF4(437-454aa PKFISHQDIRKRNVRDD), identical to the related rat and mouse sequences.
Purification	Purified by antigen-affinity chromatography
Conjugation	Unconjugated
Note	For laboratory use only. Not for any clinical, therapeutic, or diagnostic use in humans or animals. Not for animal or human consumption.



For full product information, images and publications, please visit our [website](#).

DATA IMAGES

GTX00972 WB Image

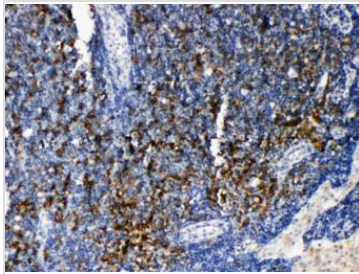
WB analysis of various sample lysates using GTX00972 TRAF4 antibody.

Lane 1 : Rat Thymus Tissue Lysate

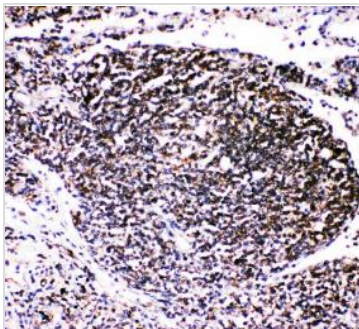
Lane 2 : HeLa Cell Lysate

Lane 3 : Jurkat Cell Lysate

Lane 4: Hepa Cell Lysate


GTX00972 IHC-P Image

IHC-P analysis of rat lymphonodus tissue using GTX00972 TRAF4 antibody.


GTX00972 IHC-P Image

IHC-P analysis of human lung cancer tissue using GTX00972 TRAF4 antibody.



For full product information, images and publications, please visit our [website](#).