



SZABO SCANDIC

Part of Europa Biosite

Produktinformation



Forschungsprodukte & Biochemikalien



Zellkultur & Verbrauchsmaterial



Diagnostik & molekulare Diagnostik



Laborgeräte & Service

Weitere Information auf den folgenden Seiten!
See the following pages for more information!



Lieferung & Zahlungsart

siehe unsere [Liefer- und Versandbedingungen](#)

Zuschläge

- Mindermengenzuschlag
- Trockeneiszuschlag
- Gefahrgutzuschlag
- Expressversand

SZABO-SCANDIC HandelsgmbH

Quellenstraße 110, A-1100 Wien

T. +43(0)1 489 3961-0

F. +43(0)1 489 3961-7

mail@szabo-scandic.com

www.szabo-scandic.com

[linkedin.com/company/szaboscandic](https://www.linkedin.com/company/szaboscandic) 

MLKL (phospho Ser358) antibody

Cat No. GTX00973

Host	Rabbit
Clonality	Polyclonal
Isotype	IgG
Application	WB, IHC-P, ELISA
Reactivity	Human, Mouse, Rat

Package
100 µl

APPLICATION

Application Note

*Optimal dilutions/concentrations should be determined by the researcher.

Suggested dilution	Dilution
WB	1:500-1:2000
IHC-P	1:50-1:200
ELISA	Assay dependent

Not tested in other applications.

Calculated MW 54 kDa. ([Note](#))

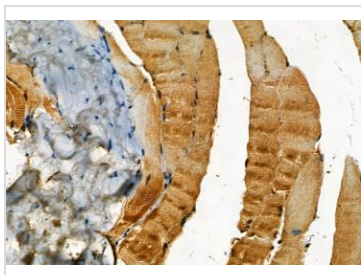
PROPERTIES

Form	Liquid
Buffer	PBS pH 7.4, 150mM NaCl, 0.02% sodium azide, 50% glycerol
Storage	Store as concentrated solution. Centrifuge briefly prior to opening vial. For short-term storage (1-2 weeks), store at 4°C. For long-term storage, aliquot and store at -20°C or below. Avoid multiple freeze-thaw cycles.
Concentration	1 mg/ml (Please refer to the vial label for the specific concentration.)
Immunogen	A synthesized peptide derived from human MLKL around the phosphorylation site of Ser358.
Purification	Purified by sequential chromatography on phospho-peptide and non-phospho-peptide columns
Conjugation	Unconjugated
Note	For laboratory use only. Not for any clinical, therapeutic, or diagnostic use in humans or animals. Not for animal or human consumption.



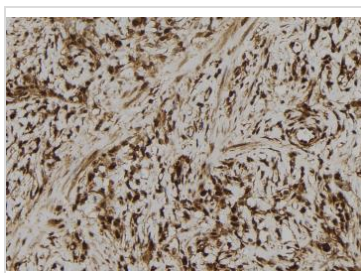
For full product information, images and publications, please visit our [website](#).

DATA IMAGES

**GTX00973 IHC-P Image**

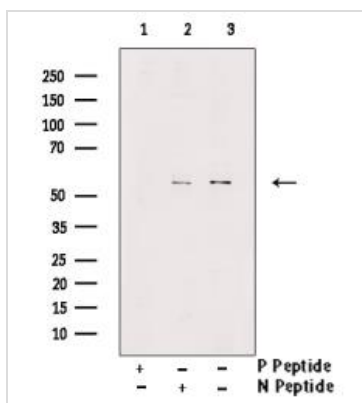
IHC-P analysis of mouse muscle tissue using GTX00973 MLKL (phospho Ser358) antibody. The sample was formaldehyde fixed and a heat mediated antigen retrieval step in citrate buffer was performed.

Dilution : 1:100

**GTX00973 IHC-P Image**

IHC-P analysis of human gastric cancer tissue sections using GTX00973 MLKL (phospho Ser358) antibody. The sample was formaldehyde fixed and a heat mediated antigen retrieval step in citrate buffer was performed.

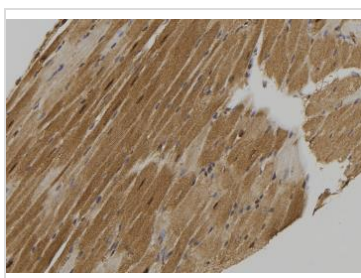
Dilution : 1:100

**GTX00973 WB Image**

WB analysis of HeLa cell lysate using GTX00973 MLKL (phospho Ser358) antibody pre-incubated with phospho- or non-phospho- peptide.

P-peptide : phospho-peptide

N-peptide : non-phospho-peptide

**GTX00973 IHC-P Image**

IHC-P analysis of mouse heart tissue using GTX00973 MLKL (phospho Ser358) antibody. The sample was formaldehyde fixed and a heat mediated antigen retrieval step in citrate buffer was performed.

Dilution : 1:100



For full product information, images and publications, please visit our [website](#).