



# SZABO SCANDIC

Part of Europa Biosite

## Produktinformation



Forschungsprodukte & Biochemikalien



Zellkultur & Verbrauchsmaterial



Diagnostik & molekulare Diagnostik



Laborgeräte & Service

Weitere Information auf den folgenden Seiten!  
See the following pages for more information!



### Lieferung & Zahlungsart

siehe unsere [Liefer- und Versandbedingungen](#)

### Zuschläge

- Mindermengenzuschlag
- Trockeneiszuschlag
- Gefahrgutzuschlag
- Expressversand

### SZABO-SCANDIC HandelsgmbH

Quellenstraße 110, A-1100 Wien

T. +43(0)1 489 3961-0

F. +43(0)1 489 3961-7

[mail@szabo-scandic.com](mailto:mail@szabo-scandic.com)

[www.szabo-scandic.com](http://www.szabo-scandic.com)

[linkedin.com/company/szaboscandic](https://www.linkedin.com/company/szaboscandic) 

## MGEA5 antibody

**Cat No. GTX01028**

<b>Host</b>	Rabbit
<b>Clonality</b>	Polyclonal
<b>Isotype</b>	IgG
<b>Application</b>	WB, IHC-P, FACS
<b>Reactivity</b>	Human

**Package**  
200 µl

## APPLICATION

**Application Note**

\*Optimal dilutions/concentrations should be determined by the researcher.

Suggested dilution	Dilution
WB	1:2000
IHC-P	1:25
FACS	1:25

Not tested in other applications.

**Calculated MW** 103 kDa. ([Note](#))

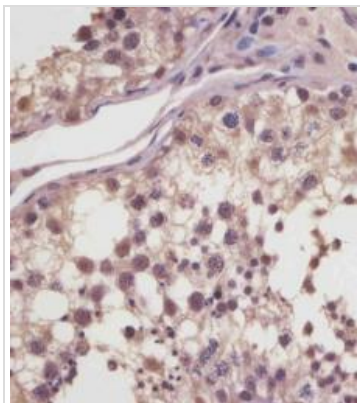
## PROPERTIES

<b>Form</b>	Liquid
<b>Buffer</b>	PBS, 0.09% (W/V) sodium azide
<b>Storage</b>	Store as concentrated solution. Centrifuge briefly prior to opening vial. For short-term storage (1-2 weeks), store at 4°C. For long-term storage, aliquot and store at -20°C or below. Avoid multiple freeze-thaw cycles.
<b>Concentration</b>	Batch dependent (Please refer to the vial label for the specific concentration.)
<b>Immunogen</b>	This MGEA5 antibody is generated from a rabbit immunized with a KLH conjugated synthetic peptide between 236-269 amino acids from the human region of human MGEA5.
<b>Purification</b>	Purified by protein A column, followed by peptide affinity purification.
<b>Conjugation</b>	Unconjugated
<b>Note</b>	For laboratory use only. Not for any clinical, therapeutic, or diagnostic use in humans or animals. Not for animal or human consumption.



For full product information, images and publications, please visit our [website](#).

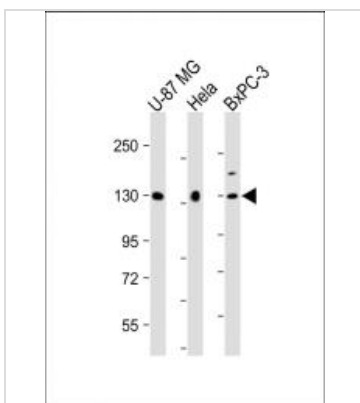
## DATA IMAGES

**GTX01028 IHC-P Image**

IHC-P analysis of human testis tissue sections using GTX01028 MGEA5 antibody.

Antigen retrieval : Heat mediation with a citrate buffer (pH6)

Dilution : 1:25

**GTX01028 WB Image**

WB analysis of various sample lysates using GTX01028 MGEA5 antibody.

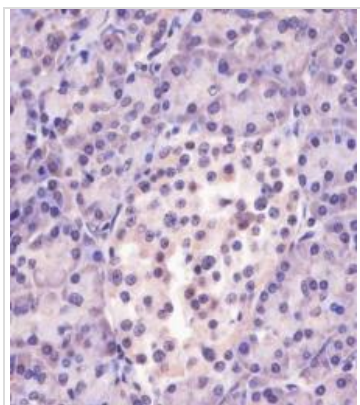
Lane 1 : U-87 MG whole cell lysate

Lane 2 : HeLa whole cell lysate

Lane 3 : BxPC-3 whole cell lysate

Dilution : 1:2000

Loading : 20 µg per lane

**GTX01028 IHC-P Image**

IHC-P analysis of human pancreas tissue sections using GTX01028 MGEA5 antibody.

Antigen retrieval : Heat mediation with a citrate buffer (pH6)

Dilution : 1:25



For full product information, images and publications, please visit our [website](#).