



SZABO SCANDIC

Part of Europa Biosite

Produktinformation



Forschungsprodukte & Biochemikalien



Zellkultur & Verbrauchsmaterial



Diagnostik & molekulare Diagnostik



Laborgeräte & Service

Weitere Information auf den folgenden Seiten!
See the following pages for more information!



Lieferung & Zahlungsart

siehe unsere [Liefer- und Versandbedingungen](#)

Zuschläge

- Mindermengenzuschlag
- Trockeneiszuschlag
- Gefahrgutzuschlag
- Expressversand

SZABO-SCANDIC HandelsgmbH

Quellenstraße 110, A-1100 Wien

T. +43(0)1 489 3961-0

F. +43(0)1 489 3961-7

mail@szabo-scandic.com

www.szabo-scandic.com

[linkedin.com/company/szaboscandic](https://www.linkedin.com/company/szaboscandic) 

ILK antibody [SC68-04]

Cat No. GTX01046

Host	Rabbit
Clonality	Monoclonal
Isotype	IgG
Application	WB, ICC/IF, IHC-P, FACS
Reactivity	Human, Mouse, Rat

Package
100 µl

APPLICATION

Application Note

*Optimal dilutions/concentrations should be determined by the researcher.

Suggested dilution	Dilution
WB	1:1000-1:2000
ICC/IF	1:50-1:200
IHC-P	1:50-1:200
FACS	1:50-1:100

Not tested in other applications.

Calculated MW 51 kDa. ([Note](#))

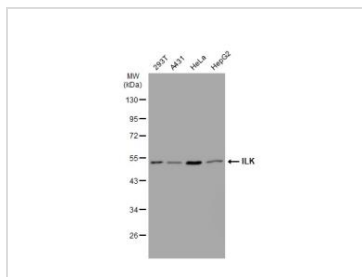
PROPERTIES

Form	Liquid
Buffer	1x TBS (pH7.4), 1% BSA, 40% glycerol, 0.05% sodium azide
Storage	Store as concentrated solution. Centrifuge briefly prior to opening vial. For short-term storage (1-2 weeks), store at 4°C. For long-term storage, aliquot and store at -20°C or below. Avoid multiple freeze-thaw cycles.
Concentration	1 mg/ml (Please refer to the vial label for the specific concentration.)
Immunogen	Recombinant protein
Purification	Protein A purified
Conjugation	Unconjugated
Note	For laboratory use only. Not for any clinical, therapeutic, or diagnostic use in humans or animals. Not for animal or human consumption.

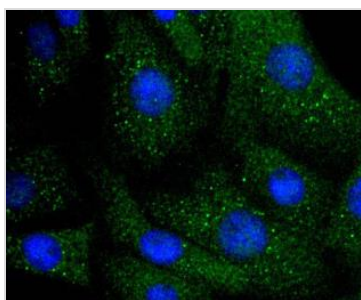


For full product information, images and publications, please visit our [website](#).

DATA IMAGES

**GTX01046 WB Image**

Various whole cell extracts (30 µg) were separated by 10% SDS-PAGE, and the membrane was blotted with ILK antibody [SC68-04] (GTX01046) diluted at 1:500. The HRP-conjugated anti-rabbit IgG antibody (GTX213110-01) was used to detect the primary antibody.

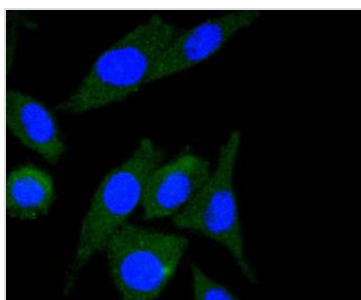
**GTX01046 ICC/IF Image**

ICC/IF analysis of PFA-fixed NIH-3T3 cells using GTX01046 ILK antibody [SC68-04].

Green : primary antibody

Blue : DAPI

Permeabilization : 0.25% Triton X-100 in PBS

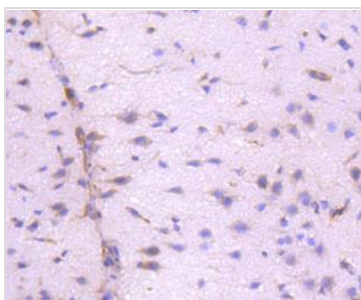
**GTX01046 ICC/IF Image**

ICC/IF analysis of PFA-fixed SH-SY-5Y cells using GTX01046 ILK antibody [SC68-04].

Green : primary antibody

Blue : DAPI

Permeabilization : 0.25% Triton X-100 in PBS

**GTX01046 IHC-P Image**

IHC-P analysis of rat brain tissue section using GTX01046 ILK antibody [SC68-04].



For full product information, images and publications, please visit our [website](#).