



# SZABO SCANDIC

Part of Europa Biosite

## Produktinformation



Forschungsprodukte & Biochemikalien



Zellkultur & Verbrauchsmaterial



Diagnostik & molekulare Diagnostik



Laborgeräte & Service

Weitere Information auf den folgenden Seiten!  
See the following pages for more information!



### Lieferung & Zahlungsart

siehe unsere [Liefer- und Versandbedingungen](#)

### Zuschläge

- Mindermengenzuschlag
- Trockeneiszuschlag
- Gefahrgutzuschlag
- Expressversand

### SZABO-SCANDIC HandelsgmbH

Quellenstraße 110, A-1100 Wien

T. +43(0)1 489 3961-0

F. +43(0)1 489 3961-7

[mail@szabo-scandic.com](mailto:mail@szabo-scandic.com)

[www.szabo-scandic.com](http://www.szabo-scandic.com)

[linkedin.com/company/szaboscandic](https://www.linkedin.com/company/szaboscandic)

## Ikaros antibody [JB50-38]

Cat No. GTX01051

<b>Host</b>	Rabbit
<b>Clonality</b>	Monoclonal
<b>Isotype</b>	IgG
<b>Application</b>	WB, IHC-P, FACS
<b>Reactivity</b>	Human, Mouse

Package  
100 µl

## APPLICATION

## Application Note

\*Optimal dilutions/concentrations should be determined by the researcher.

Suggested dilution	Dilution
WB	1:500-1:2000
IHC-P	1:50-1:200
FACS	1:50-1:100

Not tested in other applications.

<b>Calculated MW</b>	58 kDa. ( <a href="#">Note</a> )
<b>Observed MW</b>	48-75 kDa. The observed M.W. is based on the following publication. PMID: 15015965

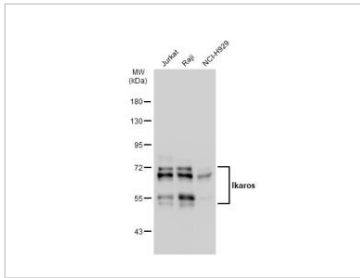
## PROPERTIES

<b>Form</b>	Liquid
<b>Buffer</b>	1x TBS (pH7.4), 1% BSA, 40% glycerol, 0.05% sodium azide
<b>Storage</b>	Store as concentrated solution. Centrifuge briefly prior to opening vial. For short-term storage (1-2 weeks), store at 4°C. For long-term storage, aliquot and store at -20°C or below. Avoid multiple freeze-thaw cycles.
<b>Concentration</b>	1 mg/ml (Please refer to the vial label for the specific concentration.)
<b>Immunogen</b>	Recombinant protein
<b>Purification</b>	Protein A purified
<b>Conjugation</b>	Unconjugated
<b>Note</b>	For laboratory use only. Not for any clinical, therapeutic, or diagnostic use in humans or animals. Not for animal or human consumption.



For full product information, images and publications, please visit our [website](#).

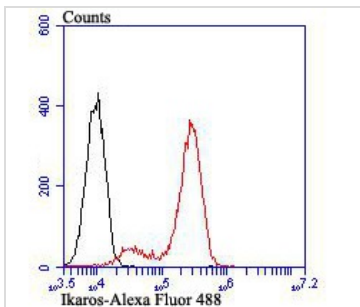
## DATA IMAGES

**GTX01051 WB Image**

Various whole cell extracts (30 µg) were separated by 7.5% SDS-PAGE, and the membrane was blotted with Ikaros antibody [JB50-38] (GTX01051) diluted at 1:500. The HRP-conjugated anti-rabbit IgG antibody (GTX213110-01) was used to detect the primary antibody.

Multiple bands were observed. It is possibly due to alternative splicing.

Reference: [PMID: 15015965](https://pubmed.ncbi.nlm.nih.gov/15015965/)

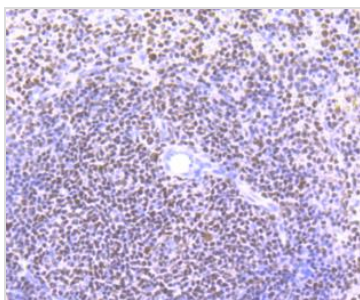
**GTX01051 FACS Image**

FACS analysis of Daudi cells using GTX01051 Ikaros antibody [JB50-38].

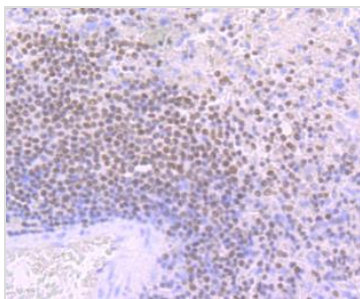
Red : primary antibody

Black : unlabelled control

Dilution : 1:100

**GTX01051 IHC-P Image**

IHC-P analysis of mouse spleen tissue section using GTX01051 Ikaros antibody [JB50-38].

**GTX01051 IHC-P Image**

IHC-P analysis of human spleen tissue section using GTX01051 Ikaros antibody [JB50-38].



For full product information, images and publications, please visit our [website](https://www.genetex.com).