



SZABO SCANDIC

Part of Europa Biosite

Produktinformation



Forschungsprodukte & Biochemikalien



Zellkultur & Verbrauchsmaterial



Diagnostik & molekulare Diagnostik



Laborgeräte & Service

Weitere Information auf den folgenden Seiten!
See the following pages for more information!



Lieferung & Zahlungsart

siehe unsere [Liefer- und Versandbedingungen](#)

Zuschläge

- Mindermengenzuschlag
- Trockeneiszuschlag
- Gefahrgutzuschlag
- Expressversand

SZABO-SCANDIC HandelsgmbH

Quellenstraße 110, A-1100 Wien

T. +43(0)1 489 3961-0

F. +43(0)1 489 3961-7

mail@szabo-scandic.com

www.szabo-scandic.com

[linkedin.com/company/szaboscandic](https://www.linkedin.com/company/szaboscandic) 

HAS2 antibody

Cat No. GTX01068

Host	Rabbit
Clonality	Polyclonal
Isotype	IgG
Application	WB, IHC-P, FACS
Reactivity	Human, Mouse

Package
200 µl

APPLICATION

Application Note

*Optimal dilutions/concentrations should be determined by the researcher.

Suggested dilution	Dilution
WB	1:1000
IHC-P	1:50-1:100
FACS	1:10-1:50

Not tested in other applications.

Calculated MW 64 kDa. ([Note](#))

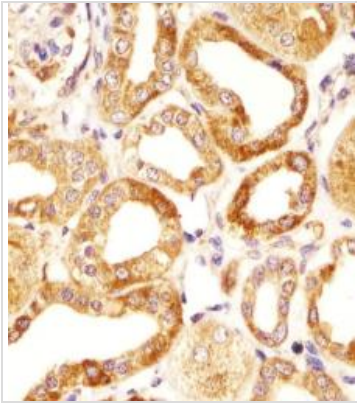
PROPERTIES

Form	Liquid
Buffer	PBS, 0.09% (W/V) sodium azide
Storage	Store as concentrated solution. Centrifuge briefly prior to opening vial. For short-term storage (1-2 weeks), store at 4°C. For long-term storage, aliquot and store at -20°C or below. Avoid multiple freeze-thaw cycles.
Concentration	Batch dependent (Please refer to the vial label for the specific concentration.)
Immunogen	This HAS2 antibody is generated from rabbits immunized with a KLH conjugated synthetic peptide between 138-166 amino acids of human HAS2.
Purification	Protein A purified followed by peptide affinity purification
Conjugation	Unconjugated
Note	For laboratory use only. Not for any clinical, therapeutic, or diagnostic use in humans or animals. Not for animal or human consumption.



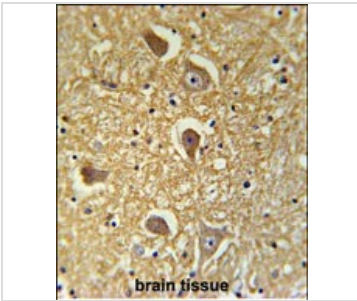
For full product information, images and publications, please visit our [website](#).

DATA IMAGES



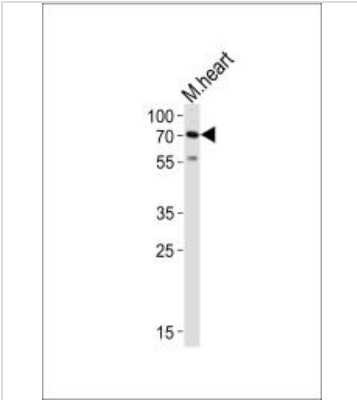
GTX01068 IHC-P Image

IHC-P analysis of human kidney tissue section using GTX01068 HAS2 antibody.
Dilution : 1:25



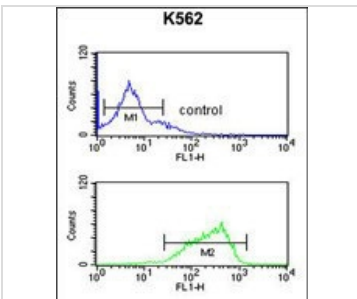
GTX01068 IHC-P Image

IHC-P analysis of human brain tissue section using GTX01068 HAS2 antibody.



GTX01068 WB Image

WB analysis of mouse heart tissue lysate using GTX01068 HAS2 antibody.
Dilution : 1:1000
Loading : 20µg



GTX01068 FACS Image

FACS analysis of K562 cells (bottom histogram) compared to a negative control (top histogram) using GTX01068 HAS2 antibody.



For full product information, images and publications, please visit our [website](#).