



SZABO SCANDIC

Part of Europa Biosite

Produktinformation



Forschungsprodukte & Biochemikalien



Zellkultur & Verbrauchsmaterial



Diagnostik & molekulare Diagnostik



Laborgeräte & Service

Weitere Information auf den folgenden Seiten!
See the following pages for more information!



Lieferung & Zahlungsart

siehe unsere [Liefer- und Versandbedingungen](#)

Zuschläge

- Mindermengenzuschlag
- Trockeneiszuschlag
- Gefahrgutzuschlag
- Expressversand

SZABO-SCANDIC HandelsgmbH

Quellenstraße 110, A-1100 Wien

T. +43(0)1 489 3961-0

F. +43(0)1 489 3961-7

mail@szabo-scandic.com

www.szabo-scandic.com

[linkedin.com/company/szaboscandic](https://www.linkedin.com/company/szaboscandic) 

GluR1 antibody

Cat No. GTX01081

Host	Rabbit
Clonality	Polyclonal
Isotype	IgG
Application	WB, ICC/IF, IHC-Fr, LCI
Reactivity	Human, Mouse, Rat

Package
50 µl

APPLICATION

Application Note

*Optimal dilutions/concentrations should be determined by the researcher.

Suggested dilution	Dilution
WB	Assay dependent
ICC/IF	Assay dependent
IHC-Fr	Assay dependent
LCI	Assay dependent

Not tested in other applications.

Calculated MW 102 kDa. ([Note](#))

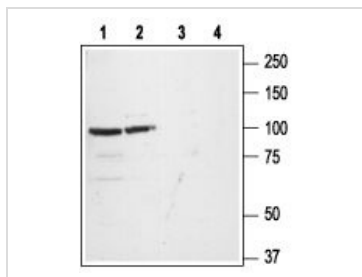
PROPERTIES

Form	Liquid
Buffer	PBS pH 7.4, 1% BSA, 0.05% sodium azide
Storage	Store as concentrated solution. Centrifuge briefly prior to opening vial. For short-term storage (1-2 weeks), store at 4°C. For long-term storage, aliquot and store at -20°C or below. Avoid multiple freeze-thaw cycles.
Concentration	Batch dependent (Please refer to the vial label for the specific concentration.)
Immunogen	Peptide RTSDSRDHTRVDWKR(C), corresponding to amino acid residues 271-285 of rat Extracellular, N-terminus GluR1 (Accession P19490).
Purification	Purified by antigen-affinity chromatography
Conjugation	Unconjugated
Note	For laboratory use only. Not for any clinical, therapeutic, or diagnostic use in humans or animals. Not for animal or human consumption.



For full product information, images and publications, please visit our [website](#).

DATA IMAGES

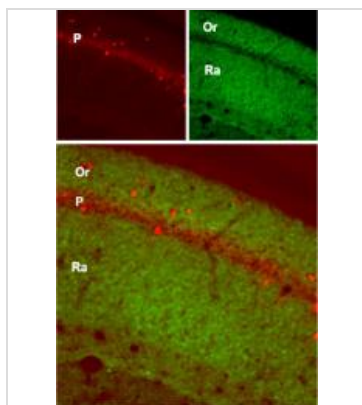
**GTX01081 WB Image**

WB analysis of rat (lanes 1 and 3) and mouse (lanes 2 and 4) brain tissue lysates using GTX01081 GluR1 antibody.

Lane 1, 2 : Primary antibody

Lane 3, 4 : Primary antibody preincubated with the control peptide antigen

Dilution : 1:200

**GTX01081 IHC-Fr Image**

IHC-Fr analysis of mouse hippocampus tissue using GTX01081 GluR1 antibody. GluR1 is present in the stratum oriens (Or) and radiatum (Ra) but not in the pyramidal layer (P).

Green : Primary antibody

Red : parvalbumin



For full product information, images and publications, please visit our [website](#).