



SZABO SCANDIC

Part of Europa Biosite

Produktinformation



Forschungsprodukte & Biochemikalien



Zellkultur & Verbrauchsmaterial



Diagnostik & molekulare Diagnostik



Laborgeräte & Service

Weitere Information auf den folgenden Seiten!
See the following pages for more information!



Lieferung & Zahlungsart

siehe unsere [Liefer- und Versandbedingungen](#)

Zuschläge

- Mindermengenzuschlag
- Trockeneiszuschlag
- Gefahrgutzuschlag
- Expressversand

SZABO-SCANDIC HandelsgmbH

Quellenstraße 110, A-1100 Wien

T. +43(0)1 489 3961-0

F. +43(0)1 489 3961-7

mail@szabo-scandic.com

www.szabo-scandic.com

[linkedin.com/company/szaboscandic](https://www.linkedin.com/company/szaboscandic) 

Integrin alpha V + beta 3 antibody

Cat No. GTX01084

Host	Rabbit
Clonality	Polyclonal
Isotype	IgG
Application	WB, ICC/IF, IHC-P, IHC-Fr, FACS
Reactivity	Human, Mouse, Rat

Package
100 µl

APPLICATION

Application Note

*Optimal dilutions/concentrations should be determined by the researcher.

Suggested dilution	Dilution
WB	Assay dependent
ICC/IF	Assay dependent
IHC-P	1:200-1:400
IHC-Fr	Assay dependent
FACS	1:20-1:100

Not tested in other applications.

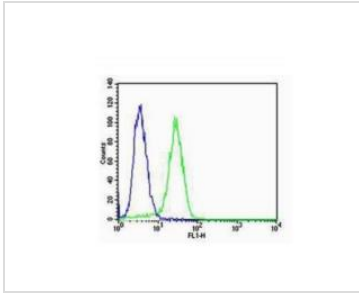
PROPERTIES

Form	Liquid
Buffer	1% BSA, 50% glycerol, 0.09% sodium azide
Storage	Store as concentrated solution. Centrifuge briefly prior to opening vial. For short-term storage (1-2 weeks), store at 4°C. For long-term storage, aliquot and store at -20°C or below. Avoid multiple freeze-thaw cycles.
Concentration	1 mg/ml (Please refer to the vial label for the specific concentration.)
Immunogen	KLH conjugated synthetic peptide derived from human Integrin Alpha V + Beta 3.
Purification	Protein A purified
Conjugation	Unconjugated
Note	For laboratory use only. Not for any clinical, therapeutic, or diagnostic use in humans or animals. Not for animal or human consumption.



For full product information, images and publications, please visit our [website](#).

DATA IMAGES

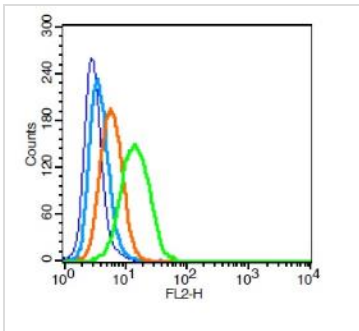
**GTX01084 FACS Image**

FACS analysis of MCF-7 cells using GTX01084 Integrin alpha V + beta 3 antibody.

Green : Primary antibody

Blue : Isotype control

Dilution : 1:100

**GTX01084 FACS Image**

FACS analysis of U937 cells using GTX01084 Integrin alpha V + beta 3 antibody.

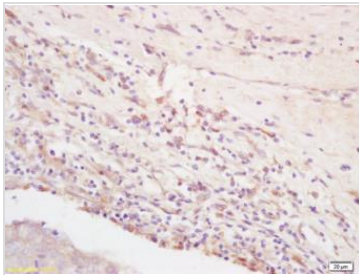
Green : Primary antibody

Blue : Cell only control

Light Blue : Secondary antibody only control

Orange : Isotype control

Antibody amount : 0.2 μ g

**GTX01084 IHC-P Image**

IHC-P analysis of rat brain tissue using GTX01084 Integrin alpha V + beta 3 antibody.

Dilution : 1:200



For full product information, images and publications, please visit our [website](#).