



SZABO SCANDIC

Part of Europa Biosite

Produktinformation



Forschungsprodukte & Biochemikalien



Zellkultur & Verbrauchsmaterial



Diagnostik & molekulare Diagnostik



Laborgeräte & Service

Weitere Information auf den folgenden Seiten!
See the following pages for more information!



Lieferung & Zahlungsart

siehe unsere [Liefer- und Versandbedingungen](#)

Zuschläge

- Mindermengenzuschlag
- Trockeneiszuschlag
- Gefahrgutzuschlag
- Expressversand

SZABO-SCANDIC HandelsgmbH

Quellenstraße 110, A-1100 Wien

T. +43(0)1 489 3961-0

F. +43(0)1 489 3961-7

mail@szabo-scandic.com

www.szabo-scandic.com

[linkedin.com/company/szaboscandic](https://www.linkedin.com/company/szaboscandic) 

CCR7 antibody

Cat No. GTX01085

Host	Rabbit
Clonality	Polyclonal
Isotype	IgG
Application	IHC-P, FACS
Reactivity	Human, Rat, Sheep

Package
100 µl

APPLICATION

Application Note

*Optimal dilutions/concentrations should be determined by the researcher.

Suggested dilution	Dilution
IHC-P	1:200-1:400
FACS	1:20-1:100

Not tested in other applications.

Calculated MW 43 kDa. ([Note](#))

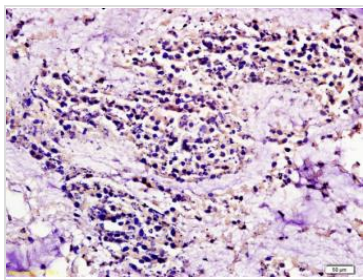
PROPERTIES

Form	Liquid
Buffer	1% BSA, 50% glycerol, 0.09% sodium azide
Storage	Store as concentrated solution. Centrifuge briefly prior to opening vial. For short-term storage (1-2 weeks), store at 4°C. For long-term storage, aliquot and store at -20°C or below. Avoid multiple freeze-thaw cycles.
Concentration	1 mg/ml (Please refer to the vial label for the specific concentration.)
Immunogen	KLH conjugated synthetic peptide derived from mouse CCR7 (25-59).
Purification	Protein A purified
Conjugation	Unconjugated
Note	For laboratory use only. Not for any clinical, therapeutic, or diagnostic use in humans or animals. Not for animal or human consumption.



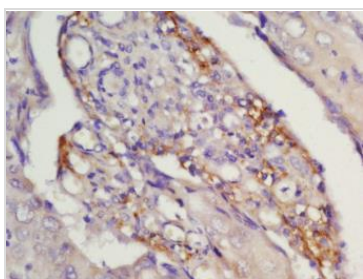
For full product information, images and publications, please visit our [website](#).

DATA IMAGES



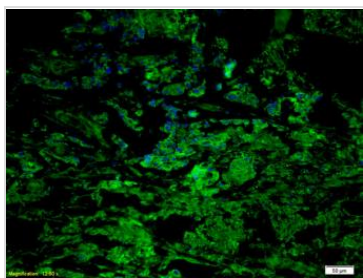
GTX01085 IHC-P Image

IHC-P analysis of human colon carcinoma tissue using GTX01085 CCR7 antibody.
Dilution : 1:200



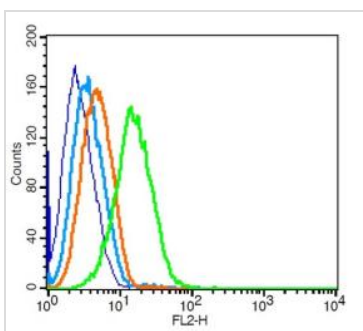
GTX01085 IHC-P Image

IHC-P analysis of human laryngo carcinoma tissue using GTX01085 CCR7 antibody.
Dilution : 1:200



GTX01085 IHC-P Image

IHC-P analysis of human gastric carcinoma tissue using GTX01085 CCR7 antibody.
Dilution : 1:200



GTX01085 FACS Image

FACS analysis of Raji cells using GTX01085 CCR7 antibody.
Green : Primary antibody
Blue : Cell only control
Light Blue : Secondary antibody only control
Orange : Isotype control
Dilution : 1:100



For full product information, images and publications, please visit our [website](#).