



SZABO SCANDIC

Part of Europa Biosite

Produktinformation



Forschungsprodukte & Biochemikalien



Zellkultur & Verbrauchsmaterial



Diagnostik & molekulare Diagnostik



Laborgeräte & Service

Weitere Information auf den folgenden Seiten!
See the following pages for more information!



Lieferung & Zahlungsart

siehe unsere [Liefer- und Versandbedingungen](#)

Zuschläge

- Mindermengenzuschlag
- Trockeneiszuschlag
- Gefahrgutzuschlag
- Expressversand

SZABO-SCANDIC HandelsgmbH

Quellenstraße 110, A-1100 Wien

T. +43(0)1 489 3961-0

F. +43(0)1 489 3961-7

mail@szabo-scandic.com

www.szabo-scandic.com

[linkedin.com/company/szaboscandic](https://www.linkedin.com/company/szaboscandic) 

Erythroid Cell Ly76 antibody [TER119]

Cat No. GTX01089

Host	Rat
Clonality	Monoclonal
Isotype	IgG2b
Application	WB, IHC-P, IHC-Fr, FACS, IP
Reactivity	Mouse

Package
250 µg

APPLICATION

Application Note

*Optimal dilutions/concentrations should be determined by the researcher.

Suggested dilution	Dilution
WB	Assay dependent
IHC-P	Assay dependent
IHC-Fr	Assay dependent
FACS	Assay dependent
IP	Assay dependent

Not tested in other applications.

Specificity/Sensitivity

This antibody is selectively reactive with both fetal and adult erythroid cells. It is specific for cells at stages from early proerythroblast to mature erythrocytes.

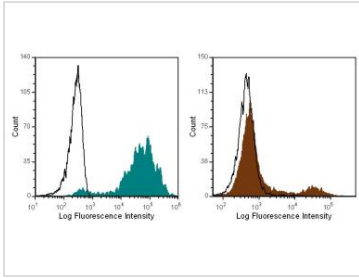
PROPERTIES

Form	Liquid
Buffer	PBS, 0.02% sodium azide
Storage	Store as concentrated solution. Centrifuge briefly prior to opening vial. For short-term storage (1-2 weeks), store at 4°C. For long-term storage, aliquot and store at -20°C or below. Avoid multiple freeze-thaw cycles.
Concentration	1 mg/ml (Please refer to the vial label for the specific concentration.)
Immunogen	Day 14 BALB/c fetal liver cells
Purification	Protein G purified
Conjugation	Unconjugated
Note	For laboratory use only. Not for any clinical, therapeutic, or diagnostic use in humans or animals. Not for animal or human consumption.



For full product information, images and publications, please visit our [website](#).

DATA IMAGES

**GTX01089 FACS Image**

FACS analysis of Balb/c whole blood (left) or bone marrow (right) cells using GTX01089 Erythroid Cell Ly76 antibody [TER119].

Filled histogram : Primary antibody

Open histogram : rat IgG2b isotype control



For full product information, images and publications, please visit our [website](#).