



SZABO SCANDIC

Part of Europa Biosite

Produktinformation



Forschungsprodukte & Biochemikalien



Zellkultur & Verbrauchsmaterial



Diagnostik & molekulare Diagnostik



Laborgeräte & Service

Weitere Information auf den folgenden Seiten!
See the following pages for more information!



Lieferung & Zahlungsart

siehe unsere [Liefer- und Versandbedingungen](#)

Zuschläge

- Mindermengenzuschlag
- Trockeneiszuschlag
- Gefahrgutzuschlag
- Expressversand

SZABO-SCANDIC HandelsgmbH

Quellenstraße 110, A-1100 Wien

T. +43(0)1 489 3961-0

F. +43(0)1 489 3961-7

mail@szabo-scandic.com

www.szabo-scandic.com

[linkedin.com/company/szaboscandic](https://www.linkedin.com/company/szaboscandic) 

MEFV antibody

Cat No. GTX01092

Host	Goat
Clonality	Polyclonal
Isotype	IgG
Application	ICC/IF, FACS
Reactivity	Human

Package
100 µg

APPLICATION

Application Note

*Optimal dilutions/concentrations should be determined by the researcher.

Suggested dilution	Dilution
ICC/IF	10µg/ml
FACS	10µg/ml

Not tested in other applications.

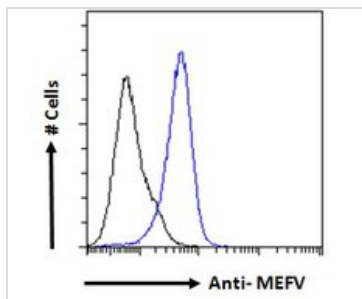
Calculated MW 86 kDa. ([Note](#))

PROPERTIES

Form	Liquid
Buffer	Tris saline pH7.3, 0.02% sodium azide, 0.5% BSA
Storage	Store as concentrated solution. Centrifuge briefly prior to opening vial. For short-term storage (1-2 weeks), store at 4°C. For long-term storage, aliquot and store at -20°C or below. Avoid multiple freeze-thaw cycles.
Concentration	0.5 mg/ml (Please refer to the vial label for the specific concentration.)
Immunogen	Peptide with sequence C-EHLKLRKSGEEQ, from the internal region of the protein sequence according to NP_000234.1
Purification	Purified by ammonium sulphate precipitation followed by antigen-affinity chromatography From serum
Conjugation	Unconjugated
Note	For laboratory use only. Not for any clinical, therapeutic, or diagnostic use in humans or animals. Not for animal or human consumption.



For full product information, images and publications, please visit our [website](#).

DATA IMAGES

GTX01092 FACS Image

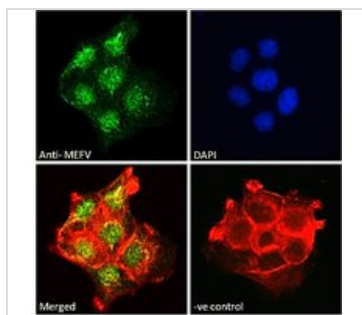
FACS analysis of PFA-fixed A431 cells using GTX01092 MEFV antibody.

Blue : Primary antibody

Black : IgG control

Permeabilization : 0.15% Triton X-100

Dilution : 10µg/ml


GTX01092 ICC/IF Image

ICC/IF analysis of PFA-fixed A431 cells using GTX01092 MEFV antibody.

Green : Primary antibody

Red : Actin

Blue : DAPI

Permeabilization : 0.15% Triton X-100

Dilution : 10µg/ml



For full product information, images and publications, please visit our [website](#).