



SZABO SCANDIC

Part of Europa Biosite

Produktinformation



Forschungsprodukte & Biochemikalien



Zellkultur & Verbrauchsmaterial



Diagnostik & molekulare Diagnostik



Laborgeräte & Service

Weitere Information auf den folgenden Seiten!
See the following pages for more information!



Lieferung & Zahlungsart

siehe unsere [Liefer- und Versandbedingungen](#)

Zuschläge

- Mindermengenzuschlag
- Trockeneiszuschlag
- Gefahrgutzuschlag
- Expressversand

SZABO-SCANDIC HandelsgmbH

Quellenstraße 110, A-1100 Wien

T. +43(0)1 489 3961-0

F. +43(0)1 489 3961-7

mail@szabo-scandic.com

www.szabo-scandic.com

[linkedin.com/company/szaboscandic](https://www.linkedin.com/company/szaboscandic) 

ARID2 antibody

Cat No. GTX01135

Host	Rabbit
Clonality	Polyclonal
Isotype	IgG
Application	WB, IHC-P
Reactivity	Human, Mouse, Rat

Package
100 µg

APPLICATION

Application Note

*Optimal dilutions/concentrations should be determined by the researcher.

Suggested dilution	Dilution
WB	0.1-0.5µg/ml
IHC-P	0.5-1µg/ml

Not tested in other applications.

Calculated MW 197 kDa. ([Note](#))

Specificity/Sensitivity Superfamily members of ARID2 are not reactive to this antibody.

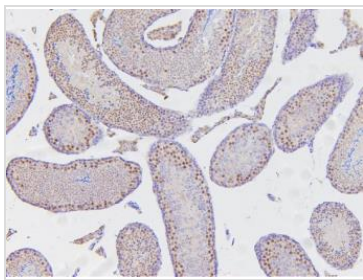
PROPERTIES

Form	Liquid
Buffer	4mg Trehalose, 0.9mg NaCl, 0.2mg Na ₂ HPO ₄ , 0.05mg sodium azide
Storage	Store as concentrated solution. Centrifuge briefly prior to opening vial. For short-term storage (1-2 weeks), store at 4°C. For long-term storage, aliquot and store at -20°C or below. Avoid multiple freeze-thaw cycles.
Concentration	0.5 mg/ml (Please refer to the vial label for the specific concentration.)
Immunogen	A synthetic peptide corresponding to a sequence of human ARID2 (DERRKGLAFLDELRFHHSR).
Purification	Purified by antigen-affinity chromatography
Conjugation	Unconjugated
Note	For laboratory use only. Not for any clinical, therapeutic, or diagnostic use in humans or animals. Not for animal or human consumption.



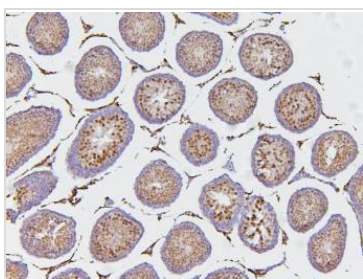
For full product information, images and publications, please visit our [website](#).

DATA IMAGES



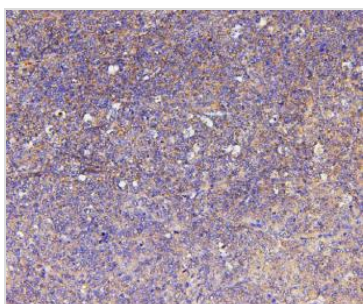
GTX01135 IHC-P Image

IHC-P analysis of mouse testis tissue using GTX01135 ARID2 antibody.
 Antigen retrieval : Heat mediated antigen retrieval was performed in citrate buffer (pH6, epitope retrieval solution) for 20 mins
 Dilution : 1µg/ml



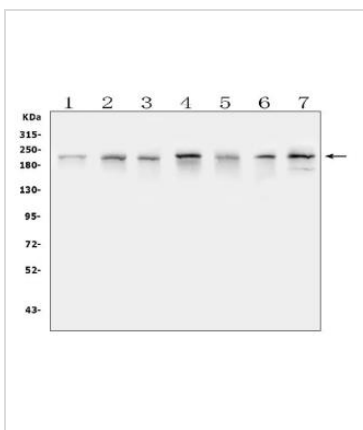
GTX01135 IHC-P Image

IHC-P analysis of rat testis tissue using GTX01135 ARID2 antibody.
 Antigen retrieval : Heat mediated antigen retrieval was performed in citrate buffer (pH6, epitope retrieval solution) for 20 mins
 Dilution : 1µg/ml



GTX01135 IHC-P Image

IHC-P analysis of human sarcoma tissue using GTX01135 ARID2 antibody.
 Antigen retrieval : Heat mediated antigen retrieval was performed in citrate buffer (pH6, epitope retrieval solution) for 20 mins
 Dilution : 1µg/ml



GTX01135 WB Image

WB analysis of various sample lysates using GTX01135 ARID2 antibody.
 Lane 1 : THP-1 whole cell lysates
 Lane 2 : K562 whole cell lysates
 Lane 3 : Caco-2 whole cell lysates
 Lane 4 : HL-60 whole cell lysates
 Lane 5 : A549 whole cell lysates
 Lane 6 : rat testicular issue lysates
 Lane 7 : mouse testicular issue lysates
 Dilution : 0.5µg/ml
 Loading : 50µg of sample under reducing conditions



For full product information, images and publications, please visit our [website](#).