



SZABO SCANDIC

Part of Europa Biosite

Produktinformation



Forschungsprodukte & Biochemikalien



Zellkultur & Verbrauchsmaterial



Diagnostik & molekulare Diagnostik



Laborgeräte & Service

Weitere Information auf den folgenden Seiten!
See the following pages for more information!



Lieferung & Zahlungsart

siehe unsere [Liefer- und Versandbedingungen](#)

Zuschläge

- Mindermengenzuschlag
- Trockeneiszuschlag
- Gefahrgutzuschlag
- Expressversand

SZABO-SCANDIC HandelsgmbH

Quellenstraße 110, A-1100 Wien

T. +43(0)1 489 3961-0

F. +43(0)1 489 3961-7

mail@szabo-scandic.com

www.szabo-scandic.com

[linkedin.com/company/szaboscandic](https://www.linkedin.com/company/szaboscandic) 

CDC2 antibody [SM01-44]

Cat No. GTX01143

Host	Rabbit
Clonality	Monoclonal
Isotype	IgG
Application	WB, ICC/IF, IHC-P, FACS
Reactivity	Human

Package
100 µl

APPLICATION

Application Note

*Optimal dilutions/concentrations should be determined by the researcher.

Suggested dilution	Dilution
WB	1:1000-1:5000
ICC/IF	1:50-1:200
IHC-P	1:50-1:200
FACS	1:50-1:100

Not tested in other applications.

Calculated MW 34 kDa. ([Note](#))

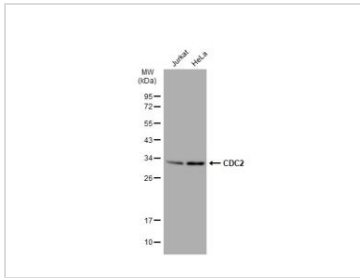
PROPERTIES

Form	Liquid
Buffer	1x TBS (pH7.4), 1% BSA, 40% glycerol, 0.05% sodium azide
Storage	Store as concentrated solution. Centrifuge briefly prior to opening vial. For short-term storage (1-2 weeks), store at 4°C. For long-term storage, aliquot and store at -20°C or below. Avoid multiple freeze-thaw cycles.
Concentration	1 mg/ml (Please refer to the vial label for the specific concentration.)
Immunogen	Recombinant protein
Purification	Protein A purified
Conjugation	Unconjugated
Note	For laboratory use only. Not for any clinical, therapeutic, or diagnostic use in humans or animals. Not for animal or human consumption.

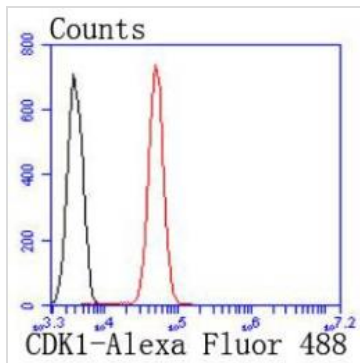


For full product information, images and publications, please visit our [website](#).

DATA IMAGES

**GTX01143 WB Image**

Various whole cell extracts (30 µg) were separated by 12% SDS-PAGE, and the membrane was blotted with CDC2 antibody [SM01-44] (GTX01143) diluted at 1:500. The HRP-conjugated anti-rabbit IgG antibody (GTX213110-01) was used to detect the primary antibody.

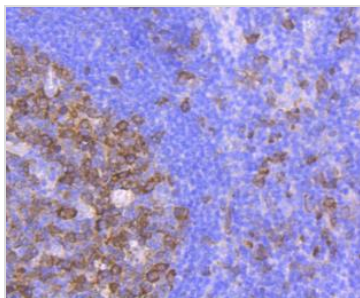
**GTX01143 FACS Image**

FACS analysis of Jurkat cells using GTX01143 CDC2 antibody [SM01-44].

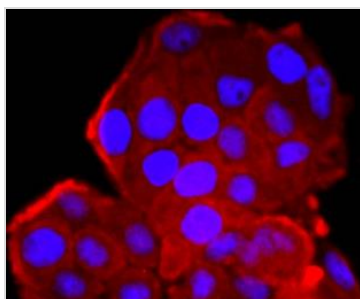
Red : primary antibody

Black : unlabelled control

Dilution : 1:50

**GTX01143 IHC-P Image**

IHC-P analysis of human tonsil tissue section using GTX01143 CDC2 antibody [SM01-44].

**GTX01143 ICC/IF Image**

ICC/IF analysis of PFA-fixed HeLa cells using GTX01143 CDC2 antibody [SM01-44].

Red : primary antibody

Blue : DAPI

Permeabilization : 0.25% Triton X-100 in PBS



For full product information, images and publications, please visit our [website](#).