



SZABO SCANDIC

Part of Europa Biosite

Produktinformation



Forschungsprodukte & Biochemikalien



Zellkultur & Verbrauchsmaterial



Diagnostik & molekulare Diagnostik



Laborgeräte & Service

Weitere Information auf den folgenden Seiten!
See the following pages for more information!



Lieferung & Zahlungsart

siehe unsere [Liefer- und Versandbedingungen](#)

Zuschläge

- Mindermengenzuschlag
- Trockeneiszuschlag
- Gefahrgutzuschlag
- Expressversand

SZABO-SCANDIC HandelsgmbH

Quellenstraße 110, A-1100 Wien

T. +43(0)1 489 3961-0

F. +43(0)1 489 3961-7

mail@szabo-scandic.com

www.szabo-scandic.com

[linkedin.com/company/szaboscandic](https://www.linkedin.com/company/szaboscandic) 

ACE2 antibody [SN0754]

Cat No. GTX01160

Host	Rabbit
Clonality	Monoclonal
Isotype	IgG
Application	WB, ICC/IF, IHC-P
Reactivity	Human, Mouse, Rat, African green monkey

Reference (2)
 Package
 100 µl

APPLICATION

Application Note

*Optimal dilutions/concentrations should be determined by the researcher.

Suggested dilution	Dilution
WB	1:500~1:5000
ICC/IF	1:100-1:500
IHC-P	1:50-1:200

Not tested in other applications.

Calculated MW	92 kDa. (Note)
Observed MW	130 kDa. The observed M.W. is based on the following publication. PMID: 24417403

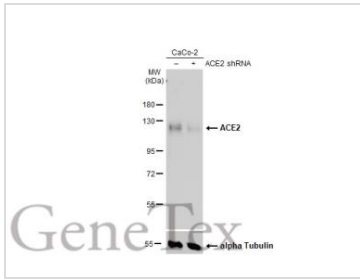
PROPERTIES

Form	Liquid
Buffer	1x TBS (pH7.4), 1% BSA, 40% glycerol, 0.05% sodium azide
Storage	Store as concentrated solution. Centrifuge briefly prior to opening vial. For short-term storage (1-2 weeks), store at 4°C. For long-term storage, aliquot and store at -20°C or below. Avoid multiple freeze-thaw cycles.
Concentration	1 mg/ml (Please refer to the vial label for the specific concentration.)
Immunogen	Synthetic peptide within Human ACE2 aa 200-230.
Purification	Protein A purified
Conjugation	Unconjugated
Note	For laboratory use only. Not for any clinical, therapeutic, or diagnostic use in humans or animals. Not for animal or human consumption.



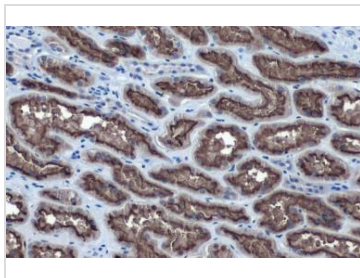
For full product information, images and publications, please visit our [website](#).

DATA IMAGES



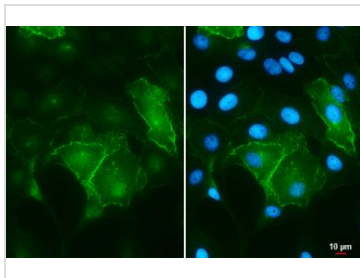
GTX01160 WB Image

Non-transfected (-) and transfected (+) Caco-2 whole cell extracts (30 µg) were separated by 7.5% SDS-PAGE, and the membrane was blotted with ACE2 antibody [SN0754] (GTX01160) diluted at 1:500. The HRP-conjugated anti-rabbit IgG antibody (GTX213110-01) was used to detect the primary antibody, and the signal was developed with Trident ECL plus-Enhanced.



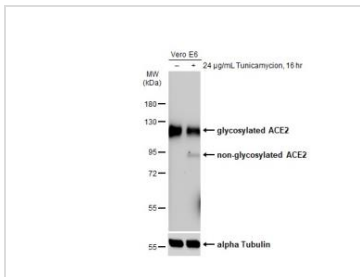
GTX01160 IHC-P Image

ACE2 antibody [SN0754] detects ACE2 protein at cell membrane by immunohistochemical analysis. Sample: Paraffin-embedded human kidney. ACE2 stained by ACE2 antibody [SN0754] (GTX01160) diluted at 1:500. Antigen Retrieval: Citrate buffer, pH 6.0, 15 min



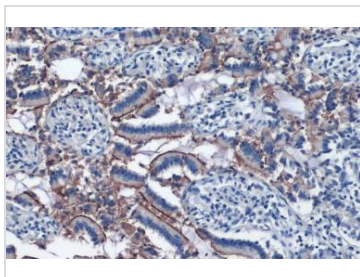
GTX01160 ICC/IF Image

ACE2 antibody [SN0754] detects ACE2 protein at cell membrane by immunofluorescent analysis. Sample: Vero E6 cells were fixed in ice-cold MeOH for 5 min. Green: ACE2 stained by ACE2 antibody [SN0754] (GTX01160) diluted at 1:500. Blue: Fluoroshield with DAPI (GTX30920). Scale bar= 10 µm.



GTX01160 WB Image

Untreated (-) and treated (+) Vero E6 whole cell extracts (30 µg) were separated by 7.5% SDS-PAGE, and the membrane was blotted with ACE2 antibody [SN0754] (GTX01160) diluted at 1:500. The HRP-conjugated anti-rabbit IgG antibody (GTX213110-01) was used to detect the primary antibody.



GTX01160 IHC-P Image

ACE2 antibody [SN0754] detects ACE2 protein at cell membrane by immunohistochemical analysis. Sample: Paraffin-embedded human intestine. ACE2 stained by ACE2 antibody [SN0754] (GTX01160) diluted at 1:2000. Antigen Retrieval: Citrate buffer, pH 6.0, 15 min



For full product information, images and publications, please visit our [website](#).