



SZABO SCANDIC

Part of Europa Biosite

Produktinformation



Forschungsprodukte & Biochemikalien



Zellkultur & Verbrauchsmaterial



Diagnostik & molekulare Diagnostik



Laborgeräte & Service

Weitere Information auf den folgenden Seiten!
See the following pages for more information!



Lieferung & Zahlungsart

siehe unsere [Liefer- und Versandbedingungen](#)

Zuschläge

- Mindermengenzuschlag
- Trockeneiszuschlag
- Gefahrgutzuschlag
- Expressversand

SZABO-SCANDIC HandelsgmbH

Quellenstraße 110, A-1100 Wien

T. +43(0)1 489 3961-0

F. +43(0)1 489 3961-7

mail@szabo-scandic.com

www.szabo-scandic.com

[linkedin.com/company/szaboscandic](https://www.linkedin.com/company/szaboscandic) 

ASIC3 antibody

Cat No. GTX01177

Host	Rabbit
Clonality	Polyclonal
Isotype	IgG
Application	WB, FACS
Reactivity	Human, Mouse, Rat

Package
100 µg

APPLICATION

Application Note

*Optimal dilutions/concentrations should be determined by the researcher.

Suggested dilution	Dilution
WB	0.1-0.5µg/ml
FACS	1-3µg/1x10 ⁶ cells

Not tested in other applications.

Calculated MW 59 kDa. ([Note](#))

Specificity/Sensitivity Superfamily members of ASIC3 are not reactive to this antibody.

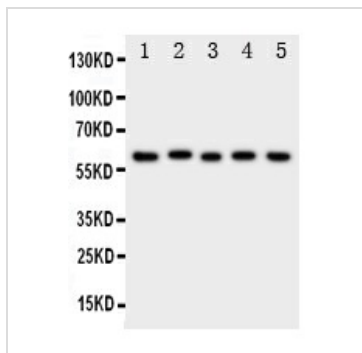
PROPERTIES

Form	Liquid
Buffer	5mg BSA, 0.9mg NaCl, 0.2mg Na ₂ HPO ₄ , 0.05mg sodium azide, 0.05mg Thimerosal
Storage	Store as concentrated solution. Centrifuge briefly prior to opening vial. For short-term storage (1-2 weeks), store at 4°C. For long-term storage, aliquot and store at -20°C or below. Avoid multiple freeze-thaw cycles.
Concentration	0.5 mg/ml (Please refer to the vial label for the specific concentration.)
Immunogen	A synthetic peptide corresponding to a sequence at the N-terminus of human ASIC3(56-73aa FLYQVAERVRYREFHHQ).
Purification	Purified by antigen-affinity chromatography
Conjugation	Unconjugated
Note	For laboratory use only. Not for any clinical, therapeutic, or diagnostic use in humans or animals. Not for animal or human consumption.



For full product information, images and publications, please visit our [website](#).

DATA IMAGES



GTX01177 WB Image

WB analysis of various sample lysates using GTX01177 ASIC3 antibody.

Lane 1 : Rat Brain Tissue Lysate

Lane 2 : Rat Testis Tissue Lysate

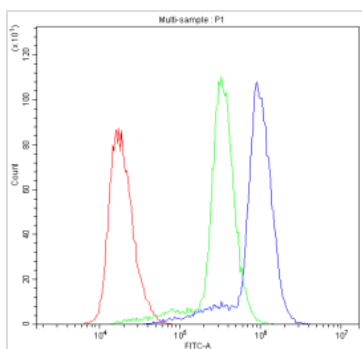
Lane 3 : U87 Cell Lysate

Lane 4 : NEURO Cell Lysate

Lane 5 : SMMC Cell Lysate

Loading : 50µg of sample under reducing conditions

Dilution : 0.5 µg/mL



GTX01177 FACS Image

FACS analysis of U937 cells using GTX01177 ASIC3 antibody.

Blue : Primary antibody

Green : Isotype control

Red : No antibody control

Antibody amount : 1µg/1x10⁶ cells



For full product information, images and publications, please visit our [website](#).