



# SZABO SCANDIC

Part of Europa Biosite

## Produktinformation



Forschungsprodukte & Biochemikalien



Zellkultur & Verbrauchsmaterial



Diagnostik & molekulare Diagnostik



Laborgeräte & Service

Weitere Information auf den folgenden Seiten!  
See the following pages for more information!



### Lieferung & Zahlungsart

siehe unsere [Liefer- und Versandbedingungen](#)

### Zuschläge

- Mindermengenzuschlag
- Trockeneiszuschlag
- Gefahrgutzuschlag
- Expressversand

### SZABO-SCANDIC HandelsgmbH

Quellenstraße 110, A-1100 Wien

T. +43(0)1 489 3961-0

F. +43(0)1 489 3961-7

[mail@szabo-scandic.com](mailto:mail@szabo-scandic.com)

[www.szabo-scandic.com](http://www.szabo-scandic.com)

[linkedin.com/company/szaboscandic](https://www.linkedin.com/company/szaboscandic) 

## Hephaestin antibody

**Cat No. GTX01178**

|                    |              |
|--------------------|--------------|
| <b>Host</b>        | Rabbit       |
| <b>Clonality</b>   | Polyclonal   |
| <b>Isotype</b>     | IgG          |
| <b>Application</b> | WB           |
| <b>Reactivity</b>  | Human, Mouse |

**Package**  
100 µl

## APPLICATION

**Application Note**

\*Optimal dilutions/concentrations should be determined by the researcher.

| Suggested dilution | Dilution     |
|--------------------|--------------|
| WB                 | 1:300-1:1000 |

Not tested in other applications.

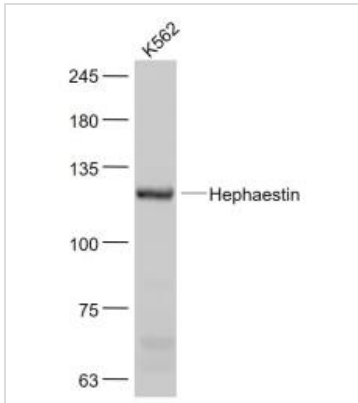
**Calculated MW** 130 kDa. ([Note](#))

## PROPERTIES

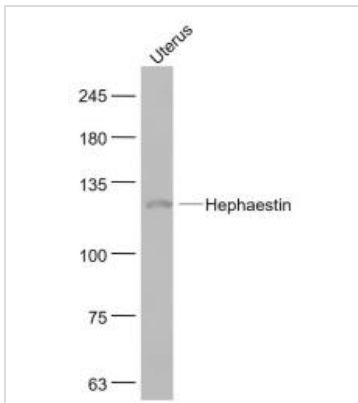
|                      |  |
|----------------------|--|
| <b>Form</b>          | Liquid   |
| <b>Buffer</b>        | 1% BSA, 50% glycerol, 0.09% sodium azide   |
| <b>Storage</b>       | Store as concentrated solution. Centrifuge briefly prior to opening vial. For short-term storage (1-2 weeks), store at 4°C. For long-term storage, aliquot and store at -20°C or below. Avoid multiple freeze-thaw cycles. |
| <b>Concentration</b> | 1 mg/ml (Please refer to the vial label for the specific concentration.)   |
| <b>Immunogen</b>     | KLH conjugated synthetic peptide derived from human Hephaestin   |
| <b>Purification</b>  | Protein A purified   |
| <b>Conjugation</b>   | Unconjugated   |
| <b>Note</b>          | For laboratory use only. Not for any clinical, therapeutic, or diagnostic use in humans or animals. Not for animal or human consumption.   |



For full product information, images and publications, please visit our [website](#).

**DATA IMAGES**

**GTX01178 WB Image**

WB analysis of K562 cell lysates using GTX01178 Hephaestin antibody.  
Dilution : 1:1000


**GTX01178 WB Image**

WB analysis of mouse uterus lysates using GTX01178 Hephaestin antibody.  
Dilution : 1:1000



For full product information, images and publications, please visit our [website](#).