



SZABO SCANDIC

Part of Europa Biosite

Produktinformation



Forschungsprodukte & Biochemikalien



Zellkultur & Verbrauchsmaterial



Diagnostik & molekulare Diagnostik



Laborgeräte & Service

Weitere Information auf den folgenden Seiten!
See the following pages for more information!



Lieferung & Zahlungsart

siehe unsere [Liefer- und Versandbedingungen](#)

Zuschläge

- Mindermengenzuschlag
- Trockeneiszuschlag
- Gefahrgutzuschlag
- Expressversand

SZABO-SCANDIC HandelsgmbH

Quellenstraße 110, A-1100 Wien

T. +43(0)1 489 3961-0

F. +43(0)1 489 3961-7

mail@szabo-scandic.com

www.szabo-scandic.com

[linkedin.com/company/szaboscandic](https://www.linkedin.com/company/szaboscandic) 

KDM5A / Jarid1A / RBBP2 antibody [9A6]

Cat No. GTX01204

Host	Mouse
Clonality	Monoclonal
Isotype	IgG2a
Application	WB
Reactivity	Human, Mouse

Package
100 µg

APPLICATION

Application Note

*Optimal dilutions/concentrations should be determined by the researcher.

Suggested dilution	Dilution
WB	~1 µg/ml

Not tested in other applications.

Calculated MW 192 kDa. ([Note](#))

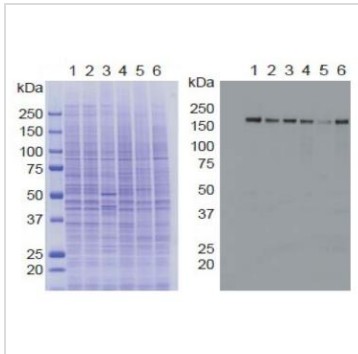
PROPERTIES

Form	Liquid
Buffer	Filter-sterilized PBS, 50% glycerol
Storage	Store as concentrated solution. Centrifuge briefly prior to opening vial. For short-term storage (1-2 weeks), store at 4°C. For long-term storage, aliquot and store at -20°C or below. Avoid multiple freeze-thaw cycles.
Concentration	1 mg/ml (Please refer to the vial label for the specific concentration.)
Immunogen	A synthetic peptide corresponding to human RBP2, amino acids 1416-1434
Purification	Purified IgG From culture supernatant
Conjugation	Unconjugated
Note	For laboratory use only. Not for any clinical, therapeutic, or diagnostic use in humans or animals. Not for animal or human consumption.



For full product information, images and publications, please visit our [website](#).

DATA IMAGES

**GTX01204 WB Image**

WB analysis of various samples using GTX01204 KDM5A / Jarid1A / RBBP2 antibody [9A6] (right).

Left : SDS-PAGE with CBB staining

Lane 1 : HeLa control siRNA

Lane 2 : HeLa RBP2 siRNA

Lane 3 : MCF-7 whole cell lysate

Lane 4 : U2OS whole cell lysate

Lane 5 : NIH-3T3 whole cell lysate

Lane 6 : J1 (mouse ES) whole cell lysate



For full product information, images and publications, please visit our [website](#).