



SZABO SCANDIC

Part of Europa Biosite

Produktinformation



Forschungsprodukte & Biochemikalien



Zellkultur & Verbrauchsmaterial



Diagnostik & molekulare Diagnostik



Laborgeräte & Service

Weitere Information auf den folgenden Seiten!
See the following pages for more information!



Lieferung & Zahlungsart

siehe unsere [Liefer- und Versandbedingungen](#)

Zuschläge

- Mindermengenzuschlag
- Trockeneiszuschlag
- Gefahrgutzuschlag
- Expressversand

SZABO-SCANDIC HandelsgmbH

Quellenstraße 110, A-1100 Wien

T. +43(0)1 489 3961-0

F. +43(0)1 489 3961-7

mail@szabo-scandic.com

www.szabo-scandic.com

[linkedin.com/company/szaboscandic](https://www.linkedin.com/company/szaboscandic) 

Human PD-L1 protein, mouse IgG1 Fc tag (active)

Cat No. GTX01279-pro**Application** Functional Assay**Species** Human**Package**

100 µg, 20 µg

APPLICATION

Application Note

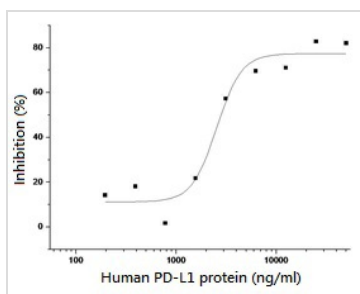
1. Measured by its binding ability in a functional ELISA. Immobilized recombinant Human PD1-His protein at 10 µg/ml (100 µl/well) can bind Human PD-L1 protein (active) (GTX01279-pro) with a linear range of 1.28-20 µg/ml.
2. Measured by its ability to inhibit anti-CD3 antibody induced IL-2 secretion in human T cell lymphocytes. The ED₅₀ for this effect is typically 0.4-3 µg/ml.

Observed MW 51.7 kDa.

PROPERTIES

Form Lyophilized powder**Buffer** Batch dependent (please contact us for details)**Storage** Store at -20°C or below. After reconstitution, keep as concentrated solution. Avoid freeze-thaw cycles.**Region/Sequence** C-terminal mouse IgG1-Fc tagged; Met1-Thr239 of Human PD-L1 protein (NP_054862.1)**Expression System** HEK293 cells**Purity** > 95% by SDS-PAGE.**Endotoxin** < 1.0 EU/µg (determined by LAL method)**Conjugation** Unconjugated**Note** For laboratory use only. Not for any clinical, therapeutic, or diagnostic use in humans or animals. Not for animal or human consumption.

DATA IMAGES

**GTX01279-pro Functional Assay Image**

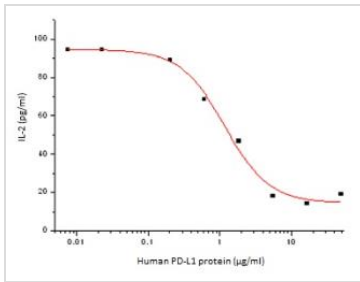
The protein binding activity was measured in a functional ELISA analysis of GTX01279-pro Human PD-L1 protein which can bind immobilized recombinant Human PD1-His protein.

Immobilized recombinant Human PD1-His protein : 10 µg/ml (100 µl/well)

GTX01279-pro : 1.28-20 µg/ml

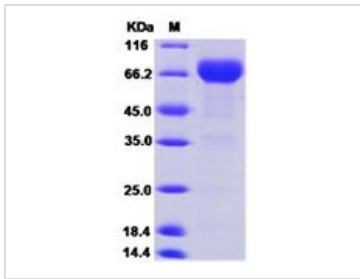


For full product information, images and publications, please visit our [website](#).


GTX01279-pro Functional Assay Image

The protein activity of GTX01279-pro Human PD-L1 protein was measured by its ability to inhibit anti-CD3 antibody (2 µg/ml) induced IL-2 secretion in human T lymphocytes.

ED₅₀ : 0.4-3 µg/ml


GTX01279-pro Image

SDS-PAGE of 5 µg GTX01279-pro Human PD-L1 protein, mouse IgG1 Fc tag (active).



For full product information, images and publications, please visit our [website](#).