



SZABO SCANDIC

Part of Europa Biosite

Produktinformation



Forschungsprodukte & Biochemikalien



Zellkultur & Verbrauchsmaterial



Diagnostik & molekulare Diagnostik



Laborgeräte & Service

Weitere Information auf den folgenden Seiten!
See the following pages for more information!



Lieferung & Zahlungsart

siehe unsere [Liefer- und Versandbedingungen](#)

Zuschläge

- Mindermengenzuschlag
- Trockeneiszuschlag
- Gefahrgutzuschlag
- Expressversand

SZABO-SCANDIC HandelsgmbH

Quellenstraße 110, A-1100 Wien

T. +43(0)1 489 3961-0

F. +43(0)1 489 3961-7

mail@szabo-scandic.com

www.szabo-scandic.com

[linkedin.com/company/szaboscandic](https://www.linkedin.com/company/szaboscandic) 

IL2 Receptor alpha antibody [PC61.5] (APC)

Cat No. GTX01472-07

Host	Rat
Clonality	Monoclonal
Isotype	IgG1
Application	FACS
Reactivity	Mouse

Reference (10)

Package

100 µg

PRODUCT

Summary

The PC61.5 antibody is specific for mouse CD25, a 55 kDa surface protein also known as the Interleukin-2 Receptor alpha chain, or IL-2R alpha. CD25 may bind IL-2 by itself, although with low affinity and without induction of cell signaling. CD25 is also expressed within a high-affinity complex, along with the IL-2R beta chain (CD122) and the common gamma chain (CD132), to form a signaling receptor complex. Expression of CD25 varies during developmental stages of T and B cells, is induced on activated mature T and B cells, and is present on subsets of dendritic cells. CD25 signaling as part of the IL-2 receptor complex triggers T cell activation and proliferation, as well as modulating the differentiation and function of Th17 cells, T regulatory (Treg) cells, and dendritic cells. The PC61.5 antibody is used as a marker for T cells, B cells and dendritic cell subsets. Expression of CD25, CD4 and the transcription factor Foxp3 is regarded as a phenotypic signature for Treg cells. As such, this antibody is widely used to distinguish Treg cells from naive or conventional T cells which are CD25. This clone has also been reported for depletion of Treg cells in vivo.

APPLICATION

Application Note

*Optimal dilutions/concentrations should be determined by the researcher.

Suggested dilution	Dilution
FACS	Assay dependent

Not tested in other applications.

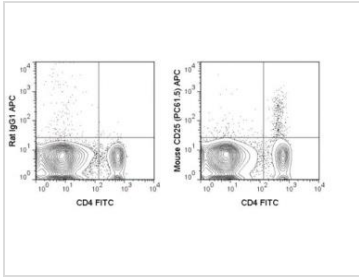
PROPERTIES

Form	Liquid
Buffer	10 mM NaH ₂ PO ₄ (pH 7.2), 150 mM NaCl, 0.09% sodium azide, 0.1% gelatin
Storage	Store as concentrated solution. Centrifuge briefly prior to opening vial. Store at 4°C. DO NOT FREEZE. Protect from light.
Concentration	0.2 mg/ml (Please refer to the vial label for the specific concentration.)
Purification	Purified by affinity chromatography From tissue culture supernatant
Conjugation	Allophycocyanin (APC)
Note	For laboratory use only. Not for any clinical, therapeutic, or diagnostic use in humans or animals. Not for animal or human consumption.



For full product information, images and publications, please visit our [website](#).

DATA IMAGES

**GTX01472-07 FACS Image**

FACS analysis of mouse C57Bl/6 splenocytes using GTX01472-07 IL2 Receptor alpha antibody [PC61.5] (APC).

Right panel : co-stained with IL2 Receptor alpha antibody [PC61.5] (APC) and Mouse CD4 antibody (FITC)

Left panel : co-stained with isotype control and Mouse CD4 antibody (FITC)

antibody amount : 0.125 μ g (5 μ l)



For full product information, images and publications, please visit our [website](#).