



SZABO SCANDIC

Part of Europa Biosite

Produktinformation



Forschungsprodukte & Biochemikalien



Zellkultur & Verbrauchsmaterial



Diagnostik & molekulare Diagnostik



Laborgeräte & Service

Weitere Information auf den folgenden Seiten!
See the following pages for more information!



Lieferung & Zahlungsart

siehe unsere [Liefer- und Versandbedingungen](#)

Zuschläge

- Mindermengenzuschlag
- Trockeneiszuschlag
- Gefahrgutzuschlag
- Expressversand

SZABO-SCANDIC HandelsgmbH

Quellenstraße 110, A-1100 Wien

T. +43(0)1 489 3961-0

F. +43(0)1 489 3961-7

mail@szabo-scandic.com

www.szabo-scandic.com

[linkedin.com/company/szaboscandic](https://www.linkedin.com/company/szaboscandic) 

Fc epsilon R1 alpha antibody [MAR-1] (APC)

Cat No. GTX01480-07

Host Armenian Hamster**Clonality** Monoclonal**Isotype** IgG**Application** FACS**Reactivity** Mouse

Reference (3)

Package

100 µg

PRODUCT

Summary

The MAR-1 antibody reacts with the Fc epsilon Receptor I alpha chain (FcεR1α), a transmembrane protein member of the Ig superfamily. This chain, together with a beta chain and two gamma chains form a tetrameric complex that supports IgE-mediated signaling and subsequent release of chemical mediators of allergy and immediate hypersensitivity. FcεR1α is upregulated in the presence of IgE on those cell types which express it, such as Mast cells and Basophils. The MAR-1 antibody is widely used both in flow cytometry and for depletion of cells in vitro / in vivo.

APPLICATION

Application Note

*Optimal dilutions/concentrations should be determined by the researcher.

Suggested dilution

Dilution

FACS

Assay dependent

Not tested in other applications.

Calculated MW

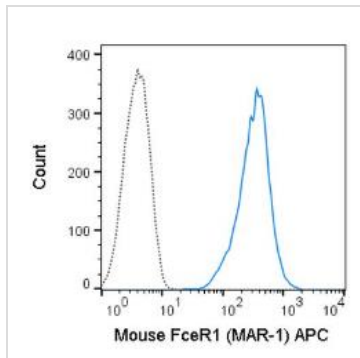
30 kDa. ([Note](#))

PROPERTIES

Form Liquid**Buffer** 10 mM NaH₂PO₄ (pH 7.2), 150 mM NaCl, 0.09% sodium azide, 0.1% gelatin**Storage** Store as concentrated solution. Centrifuge briefly prior to opening vial. Store at 4°C. DO NOT FREEZE. Protect from light.**Concentration** 0.2 mg/ml (Please refer to the vial label for the specific concentration.)**Purification** Purified by affinity chromatography
From tissue culture supernatant**Conjugation** Allophycocyanin (APC)**Note** For laboratory use only. Not for any clinical, therapeutic, or diagnostic use in humans or animals. Not for animal or human consumption.

For full product information, images and publications, please visit our [website](#).

DATA IMAGES

**GTX01480-07 FACS Image**

FACS analysis of MC/9 cells using GTX01480-07 Fc epsilon R1 alpha antibody [MAR-1] (APC).

Solid line : primary antibody

Dashed line : isotype control

antibody amount : 0.125 µg (5 µl)



For full product information, images and publications, please visit our [website](#).