



# SZABO SCANDIC

Part of Europa Biosite

## Produktinformation



Forschungsprodukte & Biochemikalien



Zellkultur & Verbrauchsmaterial



Diagnostik & molekulare Diagnostik



Laborgeräte & Service

Weitere Information auf den folgenden Seiten!  
See the following pages for more information!



### Lieferung & Zahlungsart

siehe unsere [Liefer- und Versandbedingungen](#)

### Zuschläge

- Mindermengenzuschlag
- Trockeneiszuschlag
- Gefahrgutzuschlag
- Expressversand

### SZABO-SCANDIC HandelsgmbH

Quellenstraße 110, A-1100 Wien

T. +43(0)1 489 3961-0

F. +43(0)1 489 3961-7

[mail@szabo-scandic.com](mailto:mail@szabo-scandic.com)

[www.szabo-scandic.com](http://www.szabo-scandic.com)

[linkedin.com/company/szaboscandic](https://www.linkedin.com/company/szaboscandic) 

## CD2 antibody [RM2-5] (PE)

**Cat No. GTX01481-08**

<b>Host</b>	Rat
<b>Clonality</b>	Monoclonal
<b>Isotype</b>	IgG2b
<b>Application</b>	FACS
<b>Reactivity</b>	Mouse

Reference ( 4 )

Package

100 µg

## PRODUCT

## Summary

The RM2-5 antibody reacts with mouse CD2, an approximately 50 kDa glycoprotein, and a member of the Ig superfamily. CD2, also known as LFA-2, is a receptor for CD48 in the mouse and is expressed on the cell surface of all mouse lymphocytes. CD2 mediates adhesion between cells and is involved in T cell activation. RM2-5 is reported to block CD2-mediated cell to cell adhesion.

## APPLICATION

## Application Note

\*Optimal dilutions/concentrations should be determined by the researcher.

Suggested dilution	Dilution
FACS	Assay dependent

Not tested in other applications.

**Calculated MW** 38 kDa. ( [Note](#) )

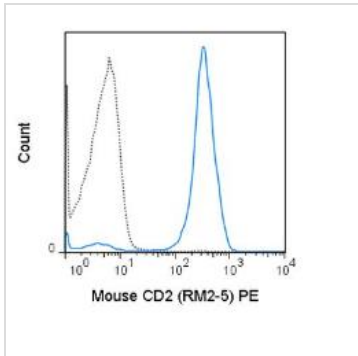
## PROPERTIES

<b>Form</b>	Liquid
<b>Buffer</b>	10 mM NaH <sub>2</sub> PO <sub>4</sub> (pH 7.2), 150 mM NaCl, 0.09% sodium azide, 0.1% gelatin
<b>Storage</b>	Store as concentrated solution. Centrifuge briefly prior to opening vial. Store at 4°C. DO NOT FREEZE. Protect from light.
<b>Concentration</b>	0.2 mg/ml (Please refer to the vial label for the specific concentration.)
<b>Purification</b>	Purified by affinity chromatography From tissue culture supernatant
<b>Conjugation</b>	Phycoerythrin (PE)
<b>Note</b>	For laboratory use only. Not for any clinical, therapeutic, or diagnostic use in humans or animals. Not for animal or human consumption.



For full product information, images and publications, please visit our [website](#).

## DATA IMAGES

**GTX01481-08 FACS Image**

FACS analysis of mouse C57Bl/6 splenocytes using GTX01481-08 CD2 antibody [RM2-5] (PE).

Solid line : primary antibody

Dashed line : isotype control

antibody amount : 0.25  $\mu$ g (5  $\mu$ l)



For full product information, images and publications, please visit our [website](#).