



SZABO SCANDIC

Part of Europa Biosite

Produktinformation



Forschungsprodukte & Biochemikalien



Zellkultur & Verbrauchsmaterial



Diagnostik & molekulare Diagnostik



Laborgeräte & Service

Weitere Information auf den folgenden Seiten!
See the following pages for more information!



Lieferung & Zahlungsart

siehe unsere [Liefer- und Versandbedingungen](#)

Zuschläge

- Mindermengenzuschlag
- Trockeneiszuschlag
- Gefahrgutzuschlag
- Expressversand

SZABO-SCANDIC HandelsgmbH

Quellenstraße 110, A-1100 Wien

T. +43(0)1 489 3961-0

F. +43(0)1 489 3961-7

mail@szabo-scandic.com

www.szabo-scandic.com

[linkedin.com/company/szaboscandic](https://www.linkedin.com/company/szaboscandic) 

CD8 alpha antibody [Hit8a] (APC)

Cat No. GTX01486-07

| | |
|--------------------|----------------------------------|
| Host | Mouse |
| Clonality | Monoclonal |
| Isotype | IgG1 |
| Application | FACS |
| Reactivity | Human, Chimpanzee, Rhesus Monkey |

Reference (3)
 Package
 100 test

PRODUCT

Summary

The Hit8a antibody is specific for the 32-34 kDa alpha chain of human CD8, known as CD8a or CD8 alpha. CD8a can form a homodimer (CD8 alpha-alpha), but is more commonly expressed as a heterodimer with a second chain known as CD8b or CD8 beta. CD8 acts as a co-receptor for antigen recognition and subsequent T cell activation that is initiated upon binding of the T cell receptor (TCR) to antigen-bearing MHC Class I molecules. The cytoplasmic domains of CD8 provide binding sites for the tyrosine kinase lck, facilitating intracellular signaling events that lead to T cell activation, development, and cytotoxic effector functions. CD8+ cytotoxic T cells (CTLs) play an important role in inducing cell death of tumor cells, as well as cells infected by virus, bacteria or parasites. The Hit8a antibody is widely used as a phenotypic marker for CD8 on cytotoxic T cells, thymocytes, as well as on certain cell types that do not also express the TCR, including some NK cells and lymphoid dendritic cells. If used together with an alternative Anti-Human CD8a clone RPA-T8, the Hit8a antibody will not block binding of RPA-T8 to CD8a.

APPLICATION

Application Note

*Optimal dilutions/concentrations should be determined by the researcher.

| Suggested dilution | Dilution |
|--------------------|--|
| FACS | 0.125 µg (5 µl) for 10 ⁵ -10 ⁸ cells in 100 µl sample per test |

Not tested in other applications.

| | |
|----------------------|----------------------------------|
| Calculated MW | 26 kDa. (Note) |
|----------------------|----------------------------------|

PROPERTIES

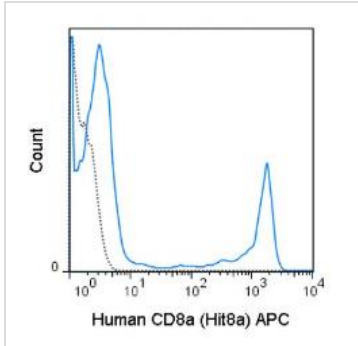
| | |
|----------------------|--|
| Form | Liquid |
| Buffer | 10 mM NaH ₂ PO ₄ (pH 7.2), 150 mM NaCl, 0.09% sodium azide, 0.1% gelatin |
| Storage | Store as concentrated solution. Centrifuge briefly prior to opening vial. Store at 4°C. DO NOT FREEZE. Protect from light. |
| Concentration | 0.025 mg/ml (Please refer to the vial label for the specific concentration.) |
| Purification | Purified by affinity chromatography From tissue culture supernatant |
| Conjugation | Allophycocyanin (APC) |



For full product information, images and publications, please visit our [website](#).

Note For laboratory use only. Not for any clinical, therapeutic, or diagnostic use in humans or animals. Not for animal or human consumption.

DATA IMAGES

**GTX01486-07 FACS Image**

FACS analysis of human peripheral blood lymphocytes using GTX01486-07 CD8 alpha antibody [Hit8a] (APC).

Solid line : primary antibody

Dashed line : isotype control

antibody amount : 0.125 μ g (5 μ l)



For full product information, images and publications, please visit our [website](#).