



SZABO SCANDIC

Part of Europa Biosite

Produktinformation



Forschungsprodukte & Biochemikalien



Zellkultur & Verbrauchsmaterial



Diagnostik & molekulare Diagnostik



Laborgeräte & Service

Weitere Information auf den folgenden Seiten!
See the following pages for more information!



Lieferung & Zahlungsart

siehe unsere [Liefer- und Versandbedingungen](#)

Zuschläge

- Mindermengenzuschlag
- Trockeneiszuschlag
- Gefahrgutzuschlag
- Expressversand

SZABO-SCANDIC HandelsgmbH

Quellenstraße 110, A-1100 Wien

T. +43(0)1 489 3961-0

F. +43(0)1 489 3961-7

mail@szabo-scandic.com

www.szabo-scandic.com

[linkedin.com/company/szaboscandic](https://www.linkedin.com/company/szaboscandic) 

PD-L1 antibody [29E.2A3] (APC)

Cat No. GTX01495-07

| | |
|--------------------|------------|
| Host | Mouse |
| Clonality | Monoclonal |
| Isotype | IgG2b |
| Application | FACS |
| Reactivity | Human |

Reference (5)

Package

100 test

PRODUCT

Summary

The 29E.2A3 antibody reacts with human CD274 which is also known as PD-L1 or B7-H1. CD274 is a type 1 transmembrane glycoprotein and a member of the Ig superfamily. PD-L1 is a ligand for CD279 (PD-1) and plays an important role in regulating immune cell responses. CD274 is expressed on activated monocytes, macrophages, dendritic cells, and T cells.

APPLICATION

Application Note

*Optimal dilutions/concentrations should be determined by the researcher.

Suggested dilution**Dilution**

| | |
|------|--|
| FACS | 2 µg (5 µl) for 10 ⁵ -10 ⁸ cells in 100 µl sample per test |
|------|--|

Not tested in other applications.

Calculated MW

33 kDa. ([Note](#))

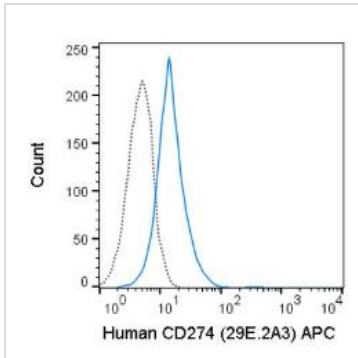
PROPERTIES

| | |
|----------------------|--|
| Form | Liquid |
| Buffer | 10 mM NaH ₂ PO ₄ (pH 7.2), 150 mM NaCl, 0.09% sodium azide, 0.1% gelatin |
| Storage | Store as concentrated solution. Centrifuge briefly prior to opening vial. Store at 4°C. DO NOT FREEZE. Protect from light. |
| Concentration | 0.4 mg/ml (Please refer to the vial label for the specific concentration.) |
| Purification | Purified by affinity chromatography From tissue culture supernatant |
| Conjugation | Allophycocyanin (APC) |
| Note | For laboratory use only. Not for any clinical, therapeutic, or diagnostic use in humans or animals. Not for animal or human consumption. |



For full product information, images and publications, please visit our [website](#).

DATA IMAGES

**GTX01495-07 FACS Image**

FACS analysis of human PBMCs (PHA stimulation for 3 days) using GTX01495-07 PD-L1 antibody [29E.2A3] (APC).

Solid line : primary antibody

Dashed line : isotype control

antibody amount : 2 μ g (5 μ l)



For full product information, images and publications, please visit our [website](#).